

Number of Sales, Farms - 3 year comparison

District	Jul 2011	Jul 2012	Jun 2013	Jul 2013
Northland	21	23	43	34
Auckland	15	29	48	52
Waikato	39	34	68	59
Bay of Plenty	13	22	25	35
Gisborne	12	7	8	6
Hawkes Bay	11	19	19	20
Taranaki	14	16	31	20
Manawatu/Wanganui	30	37	46	35
Wellington	6	12	8	5
Nelson	9	18	18	21
West Coast	10	8	11	6
Canterbury	42	54	61	54
Otago	35	36	43	45
Southland	44	41	45	46
New Zealand Total	301	356	474	438

Number of Sales, Lifestyle - 3 year comparison

District	Jul 2011	Jul 2012	Jun 2013	Jul 2013
Northland	99	130	145	146
Auckland	266	308	424	409
Waikato	148	209	227	233
Bay of Plenty	101	125	113	117
Gisborne	14	8	16	16
Hawkes Bay	44	49	65	68
Taranaki	61	45	63	68
Manawatu/Wanganui	87	113	127	121
Wellington	72	82	76	78
Nelson	77	70	73	75
West Coast	21	17	19	20
Canterbury	224	239	269	280
Otago	87	77	88	102
Southland	66	42	58	57
New Zealand Total	1367	1514	1763	1790

Number of Sales - Comparison of All Rural Sales by Type for New Zealand

Rural Property Type	Jul 2011	Jul 2012	Jun 2013	Jul 2013
Arable	16	14	20	20
Dairy	41	29	66	47
Finishing	48	71	92	109
Forestry	15	9	9	11
Grazing	156	190	228	193
Horticulture	18	29	42	39
Special	7	14	17	19
Total All Farms	301	356	474	438
Lifestyle	1367	1514	1763	1790

Number of Sales - Farms by Type

District	Arable	Dairy	Finishing	Forestry	Grazing	Horticulture	Special	All Farms	Lifestyle
Northland	0	3	4	1	19	6	1	34	146
Auckland	1	2	16	3	23	5	2	52	409
Waikato	2	15	12	0	27	0	3	59	233
Bay of Plenty	2	5	5	0	10	13	0	35	117
Gisborne	1	0	0	0	1	4	0	6	16
Hawkes Bay	1	1	6	1	3	2	6	20	68
Taranaki	0	1	2	0	16	0	1	20	68
Manawatu/Wanganui	3	0	9	1	19	1	2	35	121
Wellington	0	1	0	3	1	0	0	5	78
Nelson	3	3	2	0	8	5	0	21	75
West Coast	0	1	1	0	4	0	0	6	20
Canterbury	2	2	19	2	28	0	1	54	280
Otago	2	2	15	0	23	3	0	45	102
Southland	3	11	18	0	11	0	3	46	57
New Zealand	20	47	109	11	193	39	19	438	1790

Median Farm Size ha. - Comparison of All Farm Sales by Type for New Zealand

Rural Property Type	Jul 2011	Jul 2012	Jun 2013	Jul 2013
Arable	117	45	19	26
Dairy	134	119	132	147
Finishing	155	42	58	50
Forestry	27	123	87	66
Grazing	101	75	58	56
Horticulture	5	6	6	6
Special	35	38	37	13
Total All Farms	93	64	61	54

Median Farm Size ha. - Farms by Type

District	Arable	Dairy	Finishing	Forestry	Grazing	Horticulture	Special	All Farms
Northland		95	78	87	53	5	1	52
Auckland	35	101	40	46	46	2	7	38
Waikato	47	92	33		55		13	57
Bay of Plenty	33	96	49		41	6		21
Gisborne	8				206	8		8
Hawkes Bay	8	525	127	66	154	12	76	91
Taranaki		119	6		57		485	57
Manawatu/Wanganui	91		83	168	98	32	47	91
Wellington		259		24	41			41
Nelson	4	195	33		31	10		24
West Coast		235	60		47			57
Canterbury	156	160	41	122	127		4	102
Otago	25	597	113		76	2		84
Southland	2	151	50		54		73	75
New Zealand	26	147	50	66	56	6	13	54

Median Selling Price Per Hectare (3 month) - Comparison of All Rural Sales by District and Type

Rural Property Type	Jul 2011	Jul 2012	Jun 2013	Jul 2013
New Zealand				
Arable	\$17,980	\$20,208	\$30,031	\$27,287
Dairy	\$32,854	\$22,679	\$29,555	\$34,882
Finishing	\$12,050	\$23,028	\$18,672	\$22,500
Forestry	\$4,691	\$3,130	\$5,542	\$7,485
Grazing	\$10,935	\$13,023	\$13,831	\$15,367
Horticulture	\$114,794	\$130,000	\$120,345	\$100,667
Special	\$33,556	\$15,940	\$28,333	\$90,444
Total All Farms	\$14,649	\$17,955	\$19,716	\$20,667
Northland				
Arable				
Dairy	\$18,235	\$17,464	\$12,185	\$12,105
Finishing	\$4,976	\$31,721	\$13,267	\$10,804
Forestry	\$6,897		\$6,004	\$6,004
Grazing	\$6,353	\$10,765	\$8,591	\$9,524
Horticulture			\$135,000	\$91,924
Special	\$281,818	\$19,868		\$294,175
Total All Farms	\$6,897	\$14,371	\$10,329	\$11,677
Auckland				
Arable			\$30,488	\$30,488
Dairy	\$43,731		\$34,932	\$37,109
Finishing		\$63,559	\$18,734	\$33,094
Forestry		\$1,672		\$9,955
Grazing	\$16,537	\$30,993	\$24,138	\$19,813
Horticulture	\$711,746	\$406,685	\$271,203	\$460,396
Special		\$98,894	\$90,444	\$120,141
Total All Farms	\$31,012	\$36,581	\$31,178	\$31,178
Waikato				
Arable	\$26,059		\$104,228	\$29,912
Dairy	\$40,062	\$43,932	\$26,455	\$29,467
Finishing	\$25,966	\$29,318	\$19,052	\$29,451
Forestry				
Grazing	\$26,923	\$23,546	\$22,976	\$16,829
Horticulture				
Special	\$63,000	\$716,999	\$96,311	\$116,614
Total All Farms	\$37,423	\$32,778	\$23,750	\$23,889
Bay of Plenty				
Arable			\$33,438	\$40,494
Dairy	\$39,844	\$21,277	\$37,234	\$34,966
Finishing		\$28,841		\$31,801
Forestry		\$11,429	\$3,159	
Grazing	\$23,382	\$31,466	\$22,521	\$20,116
Horticulture	\$136,250	\$162,500	\$160,141	\$170,833
Special				
Total All Farms	\$95,000	\$72,438	\$83,300	\$45,000
Gisborne				
Arable	\$36,111		\$64,300	\$64,300
Dairy		\$9,469		
Finishing	\$3,376	\$37,982		
Forestry	\$4,619	\$3,130		

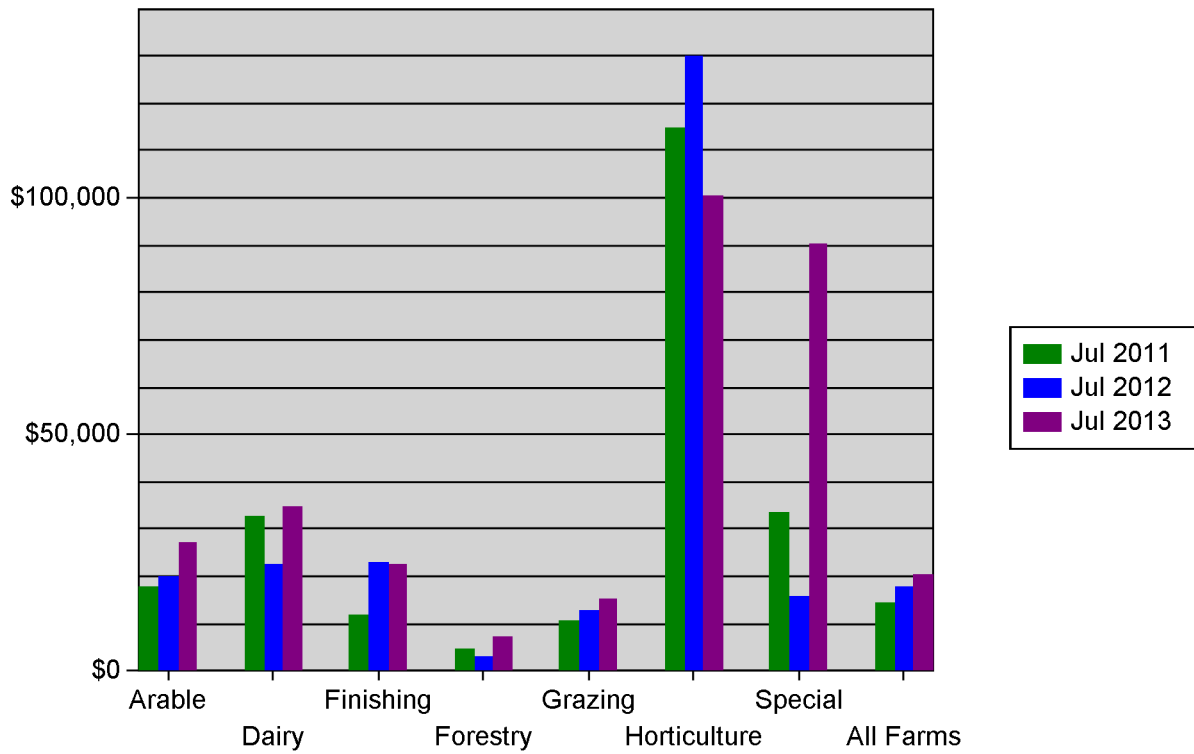
Rural Property Type		Jul 2011	Jul 2012	Jun 2013	Jul 2013
Gisborne	Grazing	\$7,090	\$3,913	\$4,501	\$6,626
	Horticulture	\$69,333	\$212,447	\$69,566	\$69,566
	Special	\$3,968		\$5,579	
	Total All Farms	\$4,682	\$9,469	\$59,991	\$65,900
Hawkes Bay	Arable	\$8,400	\$21,466	\$29,575	\$29,575
	Dairy		\$10,947		\$16,476
	Finishing	\$9,158	\$14,130	\$11,229	\$11,229
	Forestry			\$2,955	\$2,955
	Grazing	\$8,842	\$10,253	\$10,133	\$10,133
	Horticulture		\$71,014	\$63,333	\$63,512
	Special	\$465,000		\$52,498	\$36,573
	Total All Farms	\$9,158	\$21,479	\$13,780	\$15,128
	Taranaki	Arable			
Dairy		\$43,544	\$48,280	\$37,291	\$47,319
Finishing		\$7,397		\$62,303	\$103,202
Forestry		\$5,670			
Grazing		\$20,298	\$6,006	\$24,875	\$24,528
Horticulture					
Special					\$907
Total All Farms		\$11,759	\$8,388	\$28,402	\$26,639
Manawatu/Wanganui	Arable	\$47,929	\$22,234	\$17,290	\$4,695
	Dairy	\$25,227		\$25,622	
	Finishing	\$14,345	\$18,750	\$9,005	\$18,750
	Forestry	\$4,928	\$1,206	\$7,485	\$7,485
	Grazing	\$8,076	\$6,832	\$8,213	\$8,213
	Horticulture		\$281,065		\$19,671
	Special		\$10,000	\$136,065	\$136,065
	Total All Farms	\$8,923	\$10,295	\$8,700	\$8,408
Wellington	Arable	\$2,752	\$48,455		
	Dairy			\$21,798	\$21,798
	Finishing		\$7,096		
	Forestry			\$5,260	\$5,542
	Grazing	\$9,732	\$23,189	\$15,342	\$15,342
	Horticulture				
	Special		\$5,032		
	Total All Farms	\$5,331	\$19,669	\$8,601	\$15,342
Nelson	Arable			\$75,157	\$75,157
	Dairy	\$15,182	\$16,514	\$23,944	\$23,247
	Finishing		\$27,574	\$31,887	\$29,995
	Forestry	\$9,007	\$2,253		
	Grazing	\$13,471	\$6,333	\$15,138	\$17,991
	Horticulture	\$36,386	\$110,023	\$79,000	\$79,000
	Special				
	Total All Farms	\$11,795	\$20,854	\$31,887	\$24,642
West Coast	Arable				
	Dairy	\$16,269	\$17,007	\$17,266	\$17,021
	Finishing	\$5,399	\$4,855	\$22,500	\$22,500

Rural Property Type	Jul 2011	Jul 2012	Jun 2013	Jul 2013
West Coast				
Forestry				
Grazing	\$16,183	\$9,931	\$7,250	\$8,717
Horticulture				
Special				
Total All Farms	\$14,982	\$11,655	\$11,225	\$11,049
Canterbury				
Arable	\$22,255	\$21,422	\$25,000	\$23,794
Dairy	\$40,614	\$49,899	\$42,750	\$38,967
Finishing	\$17,140	\$28,150	\$41,463	\$29,338
Forestry	\$4,852	\$12,251	\$7,813	\$6,513
Grazing	\$11,207	\$13,025	\$13,823	\$19,315
Horticulture	\$36,489			
Special		\$7,717	\$124,178	\$236,101
Total All Farms	\$15,395	\$18,892	\$21,277	\$21,747
Otago				
Arable	\$9,155	\$12,027	\$17,195	\$23,418
Dairy	\$11,516	\$22,679	\$37,482	\$25,215
Finishing	\$6,138	\$13,953	\$13,351	\$10,250
Forestry		\$4,821		
Grazing	\$5,981	\$11,113	\$11,818	\$9,943
Horticulture	\$90,000	\$259,709	\$177,273	\$150,000
Special			\$14,202	
Total All Farms	\$6,634	\$11,702	\$13,321	\$12,435
Southland				
Arable		\$33,845	\$3,000	\$16,503
Dairy	\$32,246	\$20,424	\$34,643	\$37,663
Finishing	\$29,228	\$23,028	\$17,425	\$26,603
Forestry				
Grazing	\$16,850	\$16,331	\$18,966	\$20,517
Horticulture				
Special	\$23,684	\$16,504	\$13,826	\$13,042
Total All Farms	\$24,692	\$19,491	\$20,517	\$26,798

Median Sales, Lifestyle - 3 year comparison

District	Jul 2011	Jul 2012	Jun 2013	Jul 2013
Northland	\$295,500	\$336,500	\$342,500	\$345,000
Auckland	\$700,000	\$712,500	\$793,750	\$830,000
Waikato	\$395,000	\$455,000	\$497,000	\$475,000
Bay of Plenty	\$495,000	\$490,000	\$500,001	\$485,000
Gisborne	\$257,500	\$317,500	\$462,500	\$380,000
Hawkes Bay	\$550,000	\$430,000	\$410,000	\$427,500
Taranaki	\$350,000	\$360,000	\$371,000	\$370,500
Manawatu/Wanganui	\$330,000	\$330,000	\$300,000	\$347,000
Wellington	\$377,000	\$477,881	\$425,000	\$403,500
Nelson	\$505,000	\$465,000	\$515,000	\$560,000
West Coast	\$169,000	\$220,000	\$240,000	\$227,500
Canterbury	\$452,500	\$547,500	\$540,000	\$469,750
Otago	\$400,000	\$350,000	\$455,000	\$391,000
Southland	\$357,500	\$296,500	\$340,000	\$348,000
New Zealand Total	\$453,000	\$475,000	\$505,000	\$488,500

Farms - Median Price Per Hectare 3-Year Trend - All New Zealand



Lifestyle - Median Sale Price 3-Year Trend

