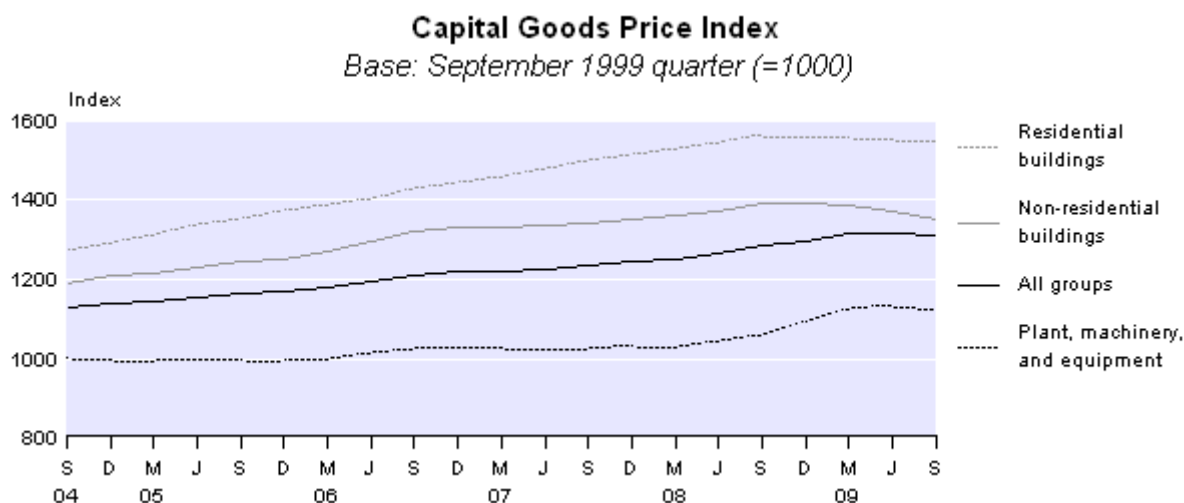


Embargoed until 10:45am – 16 November 2009

## Capital Goods Price Index: September 2009 quarter

### Highlights

- The Capital Goods Price Index (CGPI) fell by 0.4 percent.
- The non-residential buildings index fell by 1.4 percent.
- The plant, machinery and equipment index fell by 0.6 percent.
- The CGPI rose 2.3 percent in the year to the September 2009 quarter.



Dallas Welch (Mrs)  
Acting Government Statistician

16 November 2009  
ISSN 1178-0444

## Commentary

### Capital goods price index

The Capital Goods Price Index (CGPI) fell 0.4 percent in the September 2009 quarter. The latest fall followed rises of 0.3 percent in the June 2009 quarter and 1.2 percent in the March 2009 quarter.

Four out of six asset groups in the CGPI fell in the September 2009 quarter. The most significant downward contribution to the CGPI came from the non-residential buildings index (down 1.4 percent). Further downward contributions came from the plant, machinery, and equipment index (down 0.6 percent), the residential buildings index (down 0.4 percent), and the land improvements index (down 0.4 percent). The major offsetting influences came from a rise in the transport equipment index (up 0.8 percent) and the other construction index (up 0.5 percent).

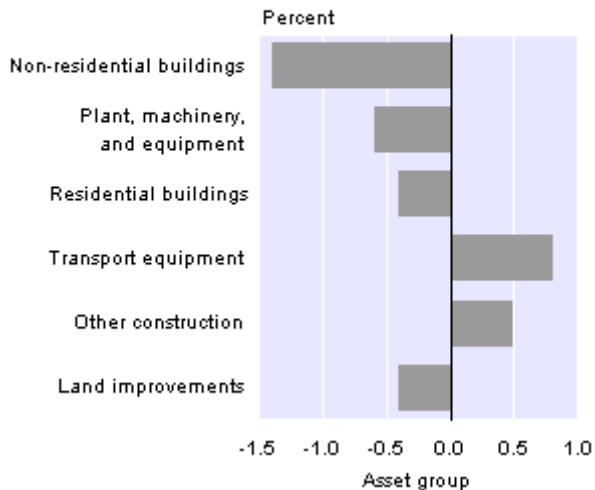
The following table shows the amount that each asset group contributed to the All Groups CGPI movement from the June 2009 quarter to the September 2009 quarter.

<b>Capital Goods Price Index</b> <i>Index points contribution</i>	
<b>Asset group</b>	<b>June 2009 quarter to September 2009 quarter</b>
Non-residential buildings	-2.95
Plant, machinery, and equipment	-2.35
Residential buildings	-1.57
Land improvements	-0.09
Other construction	0.74
Transport equipment	1.28
All groups	-4.94

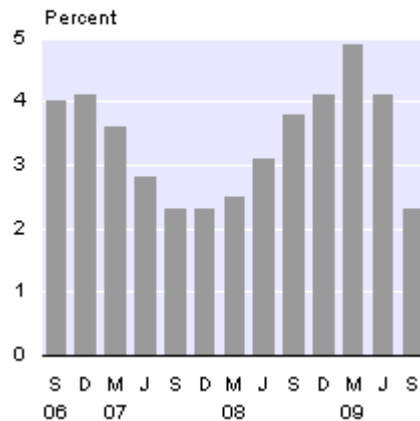
Note: Points contributions may not sum to total due to rounding.

The CGPI rose 2.3 percent from the September 2008 quarter to the September 2009 quarter. The increase followed rises of 3.8 percent in the year to the September 2008 quarter and 2.3 percent in the year to the September 2007 quarter. The latest rise is the smallest in the index since the December 2007 quarter.

**CGPI Asset Groups**  
*Quarterly change*  
 September 2009 quarter



**CGPI All Groups**  
*Annual change*



## Non-residential buildings

The non-residential buildings index was the most significant downward contributor to the CGPI index, falling 1.4 percent in the September 2009 quarter. This followed falls of 1.1 percent in the June 2009 quarter and 0.4 percent in the March 2009 quarter. The largest downward contributors were the sub-indexes for warehouses and factories (down 3.2 percent) and for shops and offices (down 1.0 percent). Lower labour and material costs for steel reinforcing and structural steelwork drove the falls in these sub-indexes.

In the year to the September 2009 quarter, the non-residential buildings index fell 3.1 percent, which is the largest annual fall since the series began in the December 1989 quarter. This fall followed rises of 4.0 percent in the year to the September 2008 quarter and 1.7 percent in the year to the September 2007 quarter.

## Plant, machinery, and equipment

The plant, machinery, and equipment index was the second most significant downward contributor to the CGPI. This index fell by 0.6 percent in the September 2009 quarter, following rises of 0.9 percent in the June 2009 quarter and 2.7 percent in the March 2009 quarter.

The fall in the plant, machinery, and equipment index was primarily driven by falls in the following indexes: other special purpose machinery (down 3.5 percent), machinery for mining, quarrying, and construction (down 3.4 percent), and computer machinery (down 1.7 percent). Respondents cited the appreciating New Zealand dollar helping to lower the prices for these assets.

In the year to the September 2009 quarter, the plant, machinery, and equipment index rose 6.5 percent. This compares with rises of 3.1 percent in the year to the September 2008 quarter, and 0.3 percent in the year to the September 2007 quarter.

## **Residential buildings**

The residential buildings index was the third most significant downward contributor to the CGPI. The residential buildings index fell 0.4 percent in the September 2009 quarter, following falls of 0.3 percent in the June 2009 quarter and 0.1 percent in the March 2009 quarter. Lower prices for apartment buildings (due to lower labour and material costs for steel reinforcing and structural steelwork) drove the latest fall.

In the year to the September 2009 quarter, the residential buildings index fell by 1.0 percent. This fall is the first annual decline in 10 years. The fall followed a rise of 4.4 percent in the year to the September 2008 quarter and 4.8 percent in the year to the September 2007 quarter.

## **Transport equipment**

The transport equipment index made the most significant upward contribution to the CGPI, with a rise of 0.8 percent in the latest quarter. This rise partly offset falls in the non-residential buildings; plant, machinery, and equipment; and residential buildings indexes. The rise in the transport equipment index followed increases of 1.4 percent in the June 2009 quarter and 3.8 percent in the March 2009 quarter. The major contributor to the latest quarterly increase came from the cars over 1600cc index (up 2.0 percent). Respondents cited higher supplier prices as the main cause for the rise in prices.

In the year to the September 2009 quarter, the transport equipment index rose 7.6 percent. This annual rise followed a rise of 0.8 percent in the year to the September 2008 quarter and a fall of 0.6 percent in the year to the September 2007 quarter.

## **Other construction**

The other construction index made the second most significant upward contribution to the CGPI, rising 0.5 percent in the September 2009 quarter. The increase followed rises of 1.0 percent in the June 2009 quarter and 1.6 percent in the March 2009 quarter.

In the year to the September 2009 quarter, the other construction index rose 4.0 percent. This followed increases of 5.7 percent in the year to the September 2008 quarter and 3.7 percent in the year to the September 2007 quarter.

## **Impact of exchange rates**

When calculating the CGPI, prices collected on the fifteenth day of the middle month in the quarter are generally used to represent the entire quarter. Prices collected for imported goods are often denominated in foreign currencies. These currencies are converted to New Zealand dollars using the exchange rate at the time of pricing.

The New Zealand dollar appreciated against all five key currencies of the country's five major trading partners in the September 2009 quarter. The table below shows changes in the value of the New Zealand dollar in foreign currency denominations from the June 2009 quarter to the September 2009 quarter.

<b>Exchange Rates</b>					
Bank selling rates for NZ\$1.00					
	USA (NZ\$:US\$)	UK (NZ\$:pound)	Australia (NZ\$:AUS\$)	Japan (NZ\$:yen)	Europe (NZ\$:euro)
15 May 2009	0.5899	0.3879	0.7776	56.5095	0.4315
15 August 2009	0.6701	0.4042	0.7995	63.5945	0.4675
Percentage change	13.6	4.2	2.8	12.5	8.3

**Source:** Westpac Banking Corporation.

For technical information contact:  
 Lisa-Jane Thomsen or Selena Eaquib  
 Wellington 04 931 4600  
**Email:** [info@stats.govt.nz](mailto:info@stats.govt.nz)

***Next release ...***

*Capital Goods Price Index: December 2009 quarter* will be released on 16 February 2010.

## **Technical notes**

### **Index coverage**

The Capital Goods Price Index (CGPI) provides a measure of the price level changes for physical capital assets purchased by producers of goods and services throughout the economy.

### **Exclusions from index**

Large value items that are non-recurring and/or manufactured to customer specifications (such as aircraft and ships) have been excluded from the price survey. Second-hand equipment (such as cars) has also been excluded from the index.

### **Calculation**

The CGPI is a Laspeyres base-weighted price index series. The weights of the commodities are determined by the relative importance within each of the asset type indexes. Weighting information has been derived from statistics on external trade, manufacturing and building, and vehicle registrations, as well as discussions with manufacturers, importers, wholesalers and retailers. Data for several years have been used, as expenditure on capital goods can be irregular. GST is excluded from prices used in this index because it is recoverable for GST-registered businesses.

### **Data quality**

All care has been used in surveying, processing, analysing and extracting the data for the CGPI. However, all data are subject to possible statistical uncertainty. These variations may result, for example, from uncertainty introduced during non-response imputation, or from reporting difficulties for respondents, or errors made during processing survey results. Statistics New Zealand adopts procedures to detect and minimise avoidable variation and eliminate errors, but they may still occur and they are not quantifiable. At higher levels of aggregation, much of the individual variability often cancels out. The CGPI data has been checked at published and underlying level indexes to identify any remaining detectable errors and uncertainty, and these are corrected or re-estimated, where possible. Ongoing work to redevelop, reweight and enhance price indexes has the potential to change the underlying indexes. Accordingly, this data may be subject to revisions in the future.

### **Coverage**

The index is calculated quarterly from price quotes collected by postal survey. Approximately 13,000 individual commodity items are surveyed from about 3,000 respondents to provide prices for use in the CGPI and other business price indexes. When calculating the CGPI, prices collected on the fifteenth day of the middle month of the quarter are generally used to represent the entire quarter. Prices collected for imported goods are often denominated in foreign currencies. These are converted to New Zealand dollars using the exchange rate at the time of pricing.

## **More information**

For more information, follow the link from the Technical notes of this release on the Statistics New Zealand website.

## **Copyright**

Information obtained from Statistics NZ may be freely used, reproduced, or quoted unless otherwise specified. In all cases Statistics NZ must be acknowledged as the source.

## **Liability**

While care has been used in processing, analysing and extracting information, Statistics NZ gives no warranty that the information supplied is free from error. Statistics NZ shall not be liable for any loss suffered through the use, directly or indirectly, of any information, product or service.

## **Timing**

Timed statistical releases are delivered using postal and electronic services provided by third parties. Delivery of these releases may be delayed by circumstances outside the control of Statistics NZ. Statistics NZ accepts no responsibility for any such delays.

## Tables

The following tables are printed with this Hot Off The Press and can also be downloaded from the Statistics New Zealand website in Excel format. If you do not have access to Excel, you may use the [Excel file viewer](#) to view, print and export the contents of the file

1. Capital Goods price index
2. Capital Goods price index, percentage change from previous quarter
3. Capital Goods price index, percentage change from same quarter of previous year



**Capital Goods Price Index: September 2009 quarter**

Table 1

**Capital Goods Price Index**

*Base: September 1999 quarter (=1000)*

(Indexes relate to price levels ruling at the mid-point of each quarter)

Asset type	Series ref: CEPQ	Quarter								
		2007		2008				2009		
		Sep	Dec	Mar	Jun	Sep	Dec	Mar	Jun	Sep
<b>Residential buildings<sup>(1)</sup></b>	<i>S2GA</i>	1496	1514	1528	1540	1562	1558	1557	1553	1547
Dwellings and out-buildings	<i>S2AA</i>	1523	1543	1557	1577	1598	1596	1597	1599	1598
Hostels, boarding house <sup>(1)</sup>	<i>S2AB</i>	1185	1194	1204	1204	1223	1216	1210	1190	1172
<b>Non-residential buildings<sup>(1)</sup></b>	<i>S2GB</i>	1340	1350	1363	1371	1393	1390	1384	1369	1350
Shops, offices <sup>(1)</sup>	<i>S2BA</i>	1282	1291	1301	1310	1330	1329	1324	1306	1293
Warehouses, factories <sup>(1)</sup>	<i>S2BB</i>	1406	1423	1447	1457	1492	1484	1472	1458	1411
Farm buildings	<i>S2BF</i>	1457	1467	1486	1511	1539	1542	1538	1524	1502
Other non-residential buildings <sup>(1)</sup>	<i>S2BI</i>	1358	1369	1378	1381	1410	1410	1406	1394	1388
<b>Other construction</b>	<i>S2GC</i>	1358	1374	1384	1405	1436	1449	1472	1486	1494
Transport ways	<i>S2CA</i>	1387	1408	1412	1426	1413	1417	1457	1495	1520
Pipelines	<i>S2CB</i>	1444	1450	1464	1483	1572	1593	1635	1636	1627
Electrical works	<i>S2CC</i>	1249	1275	1282	1310	1321	1328	1329	1332	1343
Earthmoving and site work	<i>S2CD</i>	1373	1380	1397	1423	1449	1473	1478	1502	1507
<b>Land improvements</b>	<i>S2GD</i>	1450	1472	1509	1567	1627	1659	1659	1667	1661
Land clearing and establishment	<i>S2DA</i>	1244	1253	1284	1359	1399	1456	1424	1432	1431
Fencing	<i>S2DB</i>	1361	1367	1424	1506	1551	1565	1563	1567	1539
Irrigation and land drainage	<i>S2DC</i>	2101	2182	2214	2235	2371	2412	2478	2484	2493
Reclamation and river control	<i>S2DD</i>	1281	1294	1314	1345	1379	1384	1380	1393	1397
<b>Transport equipment</b>	<i>S2GE</i>	1015	1012	1011	1015	1023	1038	1077	1092	1101
Cars 1600cc and under	<i>S2EA</i>	975	969	968	961	962	976	1022	1047	1049
Cars over 1600cc	<i>S2EB</i>	992	982	981	980	983	991	1021	1034	1055
Commercial vehicles 3500kg and under	<i>S2EC</i>	1049	1052	1052	1054	1060	1058	1104	1129	1132
Commercial vehicles over 3500kg	<i>S2ED</i>	1046	1057	1056	1071	1090	1113	1175	1201	1207
Buses	<i>S2EE</i>	1009	1032	1011	1060	1102	1204	1254	1176	1139
Trailers	<i>S2EF</i>	1358	1370	1385	1409	1433	1457	1474	1472	1469
Motorcycles	<i>S2EG</i>	990	1007	1007	1070	1067	1058	1173	1184	1196
Helicopters	<i>S2EJ</i>	1072	1020	1046	1156	1278	1621	1681	1469	1293
<b>Plant, machinery and equipment</b>	<i>S2GF</i>	1025	1031	1030	1045	1057	1093	1123	1133	1126
Glass and glass products	<i>S2371</i>	1142	1197	1056	1056	1056	1095	1124	1124	1120
Furniture	<i>S2381</i>	1115	1131	1180	1188	1263	1272	1281	1306	1316
Other manufactured articles	<i>S2389</i>	1166	1165	1176	1177	1183	1208	1214	1220	1236
Structural metal products	<i>S2421</i>	1390	1408	1423	1485	1579	1683	1676	1738	1685
Metal tanks, reservoirs and containers	<i>S2422</i>	1524	1531	1531	1542	1635	1648	1646	1633	1713
Steam generators	<i>S2423</i>	1333	1355	1360	1756	1835	1826	1670	1649	1405
Other fabricated metal products	<i>S2429</i>	1183	1195	1198	1210	1249	1294	1303	1307	1310

For footnotes, see end of table.

**Capital Goods Price Index: September 2009 quarter**

Table 1  
continued

**Capital Goods Price Index**  
**Base: September 1999 quarter (=1000)**

(Indexes relate to price levels ruling at the mid-point of each quarter)

	Series ref: CEPQ	Quarter								
		2007		2008				2009		
		Sep	Dec	Mar	Jun	Sep	Dec	Mar	Jun	Sep
<b>Plant, machinery and equipment (continued)</b>										
Engines and turbines	S2431	985	995	991	1002	1016	1060	1083	1123	1115
Pumping and compressing equipment	S2432	1166	1172	1167	1212	1224	1294	1335	1349	1341
Ovens and furnace burners	S2434	1082	1101	1102	1103	1105	1119	1228	1228	1228
Lifting and handling equipment	S2435	991	989	980	1008	1038	1190	1254	1223	1207
Other general purpose machinery	S2439	1177	1191	1191	1212	1231	1261	1293	1344	1351
Agricultural and forestry equipment	S2441	1140	1141	1142	1170	1214	1233	1282	1296	1291
Machine tools	S2442	1077	1078	1080	1107	1117	1151	1181	1201	1196
Machinery for mining, quarrying and construction	S2444	1037	1038	1035	1035	1044	1167	1301	1283	1239
Machinery for food, beverage and tobacco processing	S2445	1246	1247	1248	1286	1298	1320	1376	1376	1407
Machinery for textile, apparel and leather production	S2446	1016	1036	1034	1047	1056	1127	1167	1134	1194
Domestic appliances	S2448	1176	1184	1184	1188	1221	1251	1269	1297	1296
Other special purpose machinery	S2449	1046	1059	1031	1055	1053	1112	1152	1152	1112
Office and accounting machinery	S2451	941	937	931	942	932	928	935	936	929
Computer machinery	S2452	539	532	527	527	530	543	547	537	528
Electric motors, generators and transformers	S2461	1091	1092	1092	1110	1126	1126	1148	1150	1162
Electricity distribution and control apparatus	S2462	1139	1145	1140	1156	1148	1153	1187	1273	1275
Insulated wire and cable; optical fibre cables	S2463	2169	2186	2250	2330	1856	1892	1879	1822	1854
Accumulators, primary cells and primary batteries	S2464	1244	1315	1324	1358	1366	1366	1424	1418	1442
Other electrical equipment	S2469	1191	1213	1222	1235	1253	1259	1259	1293	1289
Television and radio transmitters and apparatus	S2472	878	873	875	876	865	893	906	909	908
Medical and surgical equipment	S2481	1185	1184	1185	1179	1199	1233	1253	1252	1243
Measuring, testing and navigating instruments	S2482	991	987	987	991	1005	1049	1140	1152	1156
Optical instruments and photographic equipment	S2483	1061	1083	1050	1062	1070	1070	1113	1087	1089
Bodies for motor vehicles and trailers	S2492	1353	1364	1374	1449	1475	1511	1531	1529	1526
Other plant, machinery and equipment	S2999	1106	1111	1097	1084	1080	1076	1082	1141	1128
<b>ALL GROUPS</b>	<b>S2GG</b>	<b>1236</b>	<b>1246</b>	<b>1252</b>	<b>1265</b>	<b>1283</b>	<b>1297</b>	<b>1313</b>	<b>1317</b>	<b>1312</b>

(1) This index does not purport to reflect all price changes in building work because of measurement difficulties, particularly with respect to margins and discounts on labour and material prices.

Table 2

**Capital Goods Price Index**  
Percentage change from previous quarter

Asset type	Series ref: CEPQ	Quarter								
		2007		2008				2009		
		Sep	Dec	Mar	Jun	Sep	Dec	Mar	Jun	Sep
<b>Residential buildings<sup>(1)</sup></b>	<i>S2GA</i>	1.4	1.2	0.9	0.8	1.4	-0.3	-0.1	-0.3	-0.4
Dwellings and out-buildings	<i>S2AA</i>	1.8	1.3	0.9	1.3	1.3	-0.1	0.1	0.1	-0.1
Hostels, boarding houses <sup>(1)</sup>	<i>S2AB</i>	0.5	0.8	0.8	0.0	1.6	-0.6	-0.5	-1.7	-1.5
<b>Non-residential buildings<sup>(1)</sup></b>	<i>S2GB</i>	0.4	0.7	1.0	0.6	1.6	-0.2	-0.4	-1.1	-1.4
Shops, offices <sup>(1)</sup>	<i>S2BA</i>	0.2	0.7	0.8	0.7	1.5	-0.1	-0.4	-1.4	-1.0
Warehouses, factories <sup>(1)</sup>	<i>S2BB</i>	0.6	1.2	1.7	0.7	2.4	-0.5	-0.8	-1.0	-3.2
Farm buildings	<i>S2BF</i>	0.6	0.7	1.3	1.7	1.9	0.2	-0.3	-0.9	-1.4
Other non-residential buildings <sup>(1)</sup>	<i>S2BI</i>	0.2	0.8	0.7	0.2	2.1	0.0	-0.3	-0.9	-0.4
<b>Other construction</b>	<i>S2GC</i>	1.3	1.2	0.7	1.5	2.2	0.9	1.6	1.0	0.5
Transport ways	<i>S2CA</i>	1.6	1.5	0.3	1.0	-0.9	0.3	2.8	2.6	1.7
Pipelines	<i>S2CB</i>	1.2	0.4	1.0	1.3	6.0	1.3	2.6	0.1	-0.6
Electrical works	<i>S2CC</i>	1.6	2.1	0.5	2.2	0.8	0.5	0.1	0.2	0.8
Earthmoving and site work	<i>S2CD</i>	0.7	0.5	1.2	1.9	1.8	1.7	0.3	1.6	0.3
<b>Land improvements</b>	<i>S2GD</i>	2.6	1.5	2.5	3.8	3.8	2.0	0.0	0.5	-0.4
Land clearing and establishment	<i>S2DA</i>	1.1	0.7	2.5	5.8	2.9	4.1	-2.2	0.6	-0.1
Fencing	<i>S2DB</i>	6.2	0.4	4.2	5.8	3.0	0.9	-0.1	0.3	-1.8
Irrigation and land drainage	<i>S2DC</i>	1.6	3.9	1.5	0.9	6.1	1.7	2.7	0.2	0.4
Reclamation and river control	<i>S2DD</i>	1.2	1.0	1.5	2.4	2.5	0.4	-0.3	0.9	0.3
<b>Transport equipment</b>	<i>S2GE</i>	-0.1	-0.3	-0.1	0.4	0.8	1.5	3.8	1.4	0.8
Cars 1600cc and under	<i>S2EA</i>	0.7	-0.6	-0.1	-0.7	0.1	1.5	4.7	2.4	0.2
Cars over 1600cc	<i>S2EB</i>	-0.7	-1.0	-0.1	-0.1	0.3	0.8	3.0	1.3	2.0
Commercial vehicles 3500kg and under	<i>S2EC</i>	0.3	0.3	0.0	0.2	0.6	-0.2	4.3	2.3	0.3
Commercial vehicles over 3500kg	<i>S2ED</i>	0.2	1.1	-0.1	1.4	1.8	2.1	5.6	2.2	0.5
Buses	<i>S2EE</i>	2.5	2.3	-2.0	4.8	4.0	9.3	4.2	-6.2	-3.1
Trailers	<i>S2EF</i>	0.1	0.9	1.1	1.7	1.7	1.7	1.2	-0.1	-0.2
Motorcycles	<i>S2EG</i>	-1.2	1.7	0.0	6.3	-0.3	-0.8	10.9	0.9	1.0
Helicopters	<i>S2EJ</i>	1.7	-4.9	2.5	10.5	10.6	26.8	3.7	-12.6	-12.0
<b>Plant, machinery and equipment</b>	<i>S2GF</i>	0.2	0.6	-0.1	1.5	1.1	3.4	2.7	0.9	-0.6
Glass and glass products	<i>S2371</i>	13.3	4.8	-11.8	0.0	0.0	3.7	2.6	0.0	-0.4
Furniture	<i>S2381</i>	1.5	1.4	4.3	0.7	6.3	0.7	0.7	2.0	0.8
Other manufactured articles	<i>S2389</i>	0.3	-0.1	0.9	0.1	0.5	2.1	0.5	0.5	1.3
Structural metal products	<i>S2421</i>	1.2	1.3	1.1	4.4	6.3	6.6	-0.4	3.7	-3.0
Metal tanks, reservoirs and containers	<i>S2422</i>	0.1	0.5	0.0	0.7	6.0	0.8	-0.1	-0.8	4.9
Steam generators	<i>S2423</i>	3.9	1.7	0.4	29.1	4.5	-0.5	-8.5	-1.3	-14.8
Other fabricated metal products	<i>S2429</i>	0.8	1.0	0.3	1.0	3.2	3.6	0.7	0.3	0.2

For footnotes, see end of table.

Table 2  
continued

**Capital Goods Price Index**  
Percentage change from previous quarter

	Series ref: CEPQ	Quarter								
		2007		2008				2009		
		Sep	Dec	Mar	Jun	Sep	Dec	Mar	Jun	Sep
<b>Plant, machinery and equipment (continued)</b>										
Engines and turbines	S2431	-0.5	1.0	-0.4	1.1	1.4	4.3	2.2	3.7	-0.7
Pumping and compressing equipment	S2432	0.2	0.5	-0.4	3.9	1.0	5.7	3.2	1.0	-0.6
Ovens and furnace burners	S2434	0.0	1.8	0.1	0.1	0.2	1.3	9.7	0.0	0.0
Lifting and handling equipment	S2435	0.6	-0.2	-0.9	2.9	3.0	14.6	5.4	-2.5	-1.3
Other general purpose machinery	S2439	0.9	1.2	0.0	1.8	1.6	2.4	2.5	3.9	0.5
Agricultural and forestry equipment	S2441	0.2	0.1	0.1	2.5	3.8	1.6	4.0	1.1	-0.4
Machine tools	S2442	0.5	0.1	0.2	2.5	0.9	3.0	2.6	1.7	-0.4
Machinery for mining, quarrying and construction	S2444	-0.4	0.1	-0.3	0.0	0.9	11.8	11.5	-1.4	-3.4
Machinery for food, beverage and tobacco processing	S2445	1.6	0.1	0.1	3.0	0.9	1.7	4.2	0.0	2.3
Machinery for textile, apparel and leather production	S2446	1.0	2.0	-0.2	1.3	0.9	6.7	3.5	-2.8	5.3
Domestic appliances	S2448	0.5	0.7	0.0	0.3	2.8	2.5	1.4	2.2	-0.1
Other special purpose machinery	S2449	-1.8	1.2	-2.6	2.3	-0.2	5.6	3.6	0.0	-3.5
Office and accounting machinery	S2451	-0.3	-0.4	-0.6	1.2	-1.1	-0.4	0.8	0.1	-0.7
Computer machinery	S2452	-1.1	-1.3	-0.9	0.0	0.6	2.5	0.7	-1.8	-1.7
Electric motors, generators and transformers	S2461	0.1	0.1	0.0	1.6	1.4	0.0	2.0	0.2	1.0
Electricity distribution and control apparatus	S2462	0.5	0.5	-0.4	1.4	-0.7	0.4	2.9	7.2	0.2
Insulated wire and cable; optical fibre cables	S2463	8.9	0.8	2.9	3.6	-20.3	1.9	-0.7	-3.0	1.8
Accumulators, primary cells and primary batteries	S2464	6.1	5.7	0.7	2.6	0.6	0.0	4.2	-0.4	1.7
Other electrical equipment	S2469	3.6	1.8	0.7	1.1	1.5	0.5	0.0	2.7	-0.3
Television and radio transmitters and apparatus	S2472	0.1	-0.6	0.2	0.1	-1.3	3.2	1.5	0.3	-0.1
Medical and surgical equipment	S2481	0.1	-0.1	0.1	-0.5	1.7	2.8	1.6	-0.1	-0.7
Measuring, testing and navigating instruments	S2482	-6.4	-0.4	0.0	0.4	1.4	4.4	8.7	1.1	0.3
Optical instruments and photographic equipment	S2483	-0.7	2.1	-3.0	1.1	0.8	0.0	4.0	-2.3	0.2
Bodies for motor vehicles and trailers	S2492	0.1	0.8	0.7	5.5	1.8	2.4	1.3	-0.1	-0.2
Other plant, machinery and equipment	S2999	-0.5	0.5	-1.3	-1.2	-0.4	-0.4	0.6	5.5	-1.1
<b>ALL GROUPS</b>	S2GG	0.7	0.8	0.5	1.0	1.4	1.1	1.2	0.3	-0.4

(1) This index does not purport to reflect all price changes in building work because of measurement difficulties, particularly with respect to margins and discounts on labour and material prices.

Table 3

**Capital Goods Price Index**  
Percentage change from same quarter of previous year

Asset type	Series ref: CEPQ	Quarter								
		2007		2008				2009		
		Sep	Dec	Mar	Jun	Sep	Dec	Mar	Jun	Sep
<b>Residential buildings<sup>(1)</sup></b>	<i>S2GA</i>	4.8	5.1	5.0	4.4	4.4	2.9	1.9	0.8	-1.0
Dwellings and out-buildings	<i>S2AA</i>	6.0	6.4	5.8	5.4	4.9	3.4	2.6	1.4	0.0
Hostels, boarding houses <sup>(1)</sup>	<i>S2AB</i>	1.5	1.2	2.3	2.1	3.2	1.8	0.5	-1.2	-4.2
<b>Non-residential buildings<sup>(1)</sup></b>	<i>S2GB</i>	1.7	1.4	2.3	2.8	4.0	3.0	1.5	-0.1	-3.1
Shops, offices <sup>(1)</sup>	<i>S2BA</i>	0.9	1.0	2.0	2.4	3.7	2.9	1.8	-0.3	-2.8
Warehouses, factories <sup>(1)</sup>	<i>S2BB</i>	2.2	2.5	3.8	4.2	6.1	4.3	1.7	0.1	-5.4
Farm buildings	<i>S2BF</i>	7.4	2.6	3.2	4.3	5.6	5.1	3.5	0.9	-2.4
Other non-residential buildings <sup>(1)</sup>	<i>S2BI</i>	3.1	2.4	3.0	1.9	3.8	3.0	2.0	0.9	-1.6
<b>Other construction</b>	<i>S2GC</i>	3.7	3.3	3.7	4.9	5.7	5.5	6.4	5.8	4.0
Transport ways	<i>S2CA</i>	3.3	2.7	2.9	4.5	1.9	0.6	3.2	4.8	7.6
Pipelines	<i>S2CB</i>	4.2	2.9	3.5	3.9	8.9	9.9	11.7	10.3	3.5
Electrical works	<i>S2CC</i>	2.8	4.3	4.6	6.6	5.8	4.2	3.7	1.7	1.7
Earthmoving and site work	<i>S2CD</i>	5.0	3.3	3.3	4.3	5.5	6.7	5.8	5.6	4.0
<b>Land improvements</b>	<i>S2GD</i>	4.9	5.0	6.5	10.9	12.2	12.7	9.9	6.4	2.1
Land clearing and establishment	<i>S2DA</i>	2.9	2.5	5.0	10.4	12.5	16.2	10.9	5.4	2.3
Fencing	<i>S2DB</i>	7.8	7.1	8.9	17.6	14.0	14.5	9.8	4.1	-0.8
Irrigation and land drainage	<i>S2DC</i>	5.2	7.3	7.3	8.1	12.9	10.5	11.9	11.1	5.1
Reclamation and river control	<i>S2DD</i>	3.5	2.5	4.0	6.2	7.7	7.0	5.0	3.6	1.3
<b>Transport equipment</b>	<i>S2GE</i>	-0.6	-0.5	-0.4	-0.1	0.8	2.6	6.5	7.6	7.6
Cars 1600cc and under	<i>S2EA</i>	0.5	-0.1	-0.2	-0.7	-1.3	0.7	5.6	8.9	9.0
Cars over 1600cc	<i>S2EB</i>	-0.9	-1.9	-1.8	-1.9	-0.9	0.9	4.1	5.5	7.3
Commercial vehicles 3500kg and under	<i>S2EC</i>	0.9	1.0	1.0	0.8	1.0	0.6	4.9	7.1	6.8
Commercial vehicles over 3500kg	<i>S2ED</i>	-2.3	1.0	2.3	2.6	4.2	5.3	11.3	12.1	10.7
Buses	<i>S2EE</i>	-2.9	0.9	1.0	7.7	9.2	16.7	24.0	10.9	3.4
Trailers	<i>S2EF</i>	2.1	2.9	3.2	3.9	5.5	6.4	6.4	4.5	2.5
Motorcycles	<i>S2EG</i>	-1.5	0.2	-0.2	6.8	7.8	5.1	16.5	10.7	12.1
Helicopters	<i>S2EJ</i>	0.0	-0.2	-6.6	9.7	19.2	58.9	60.7	27.1	1.2
<b>Plant, machinery and equipment</b>	<i>S2GF</i>	0.3	0.4	0.3	2.2	3.1	6.0	9.0	8.4	6.5
Glass and glass products	<i>S2371</i>	17.9	19.0	4.9	4.8	-7.5	-8.5	6.4	6.4	6.1
Furniture	<i>S2381</i>	3.4	5.1	8.5	8.1	13.3	12.5	8.6	9.9	4.2
Other manufactured articles	<i>S2389</i>	2.5	1.0	1.9	1.3	1.5	3.7	3.2	3.7	4.5
Structural metal products	<i>S2421</i>	5.5	4.6	3.2	8.2	13.6	19.5	17.8	17.0	6.7
Metal tanks, reservoirs and containers	<i>S2422</i>	13.1	10.2	0.6	1.3	7.3	7.6	7.5	5.9	4.8
Steam generators	<i>S2423</i>	-1.2	5.2	6.0	36.9	37.7	34.8	22.8	-6.1	-23.4
Other fabricated metal products	<i>S2429</i>	2.5	2.5	2.5	3.1	5.6	8.3	8.8	8.0	4.9

For footnotes, see end of table.

**Capital Goods Price Index: September 2009 quarter**

Table 3  
continued

**Capital Goods Price Index**  
Percentage change from same quarter of previous year

	Series ref: CEPQ	Quarter								
		2007		2008				2009		
		Sep	Dec	Mar	Jun	Sep	Dec	Mar	Jun	Sep
<b>Plant, machinery and equipment (continued)</b>										
Engines and turbines	S2431	1.1	-0.4	-0.1	1.2	3.1	6.5	9.3	12.1	9.7
Pumping and compressing equipment	S2432	5.8	5.2	3.7	4.1	5.0	10.4	14.4	11.3	9.6
Ovens and furnace burners	S2434	1.6	1.9	1.9	1.9	2.1	1.6	11.4	11.3	11.1
Lifting and handling equipment	S2435	-2.9	-2.1	-1.2	2.3	4.7	20.3	28.0	21.3	16.3
Other general purpose machinery	S2439	3.6	3.1	2.6	3.9	4.6	5.9	8.6	10.9	9.7
Agricultural and forestry equipment	S2441	1.0	0.7	0.3	2.8	6.5	8.1	12.3	10.8	6.3
Machine tools	S2442	0.2	0.5	0.5	3.3	3.7	6.8	9.4	8.5	7.1
Machinery for mining, quarrying and construction	S2444	-1.2	-1.1	-1.3	-0.6	0.7	12.4	25.7	24.0	18.7
Machinery for food, beverage and tobacco processing	S2445	5.7	3.0	3.1	4.9	4.2	5.9	10.3	7.0	8.4
Machinery for textile, apparel and leather production	S2446	-0.7	1.1	1.9	4.1	3.9	8.8	12.9	8.3	13.1
Domestic appliances	S2448	3.5	4.0	3.3	1.5	3.8	5.7	7.2	9.2	6.1
Other special purpose machinery	S2449	-5.3	-3.6	-5.9	-0.9	0.7	5.0	11.7	9.2	5.6
Office and accounting machinery	S2451	-0.4	-0.8	-1.4	-0.2	-1.0	-1.0	0.4	-0.6	-0.3
Computer machinery	S2452	-5.3	-5.3	-5.0	-3.3	-1.7	2.1	3.8	1.9	-0.4
Electric motors, generators and transformers	S2461	1.2	0.1	0.5	1.8	3.2	3.1	5.1	3.6	3.2
Electricity distribution and control apparatus	S2462	3.4	4.7	2.5	2.0	0.8	0.7	4.1	10.1	11.1
Insulated wire and cable; optical fibre cables	S2463	14.6	5.5	11.3	17.0	-14.4	-13.4	-16.5	-21.8	-0.1
Accumulators, primary cells and primary batteries	S2464	15.5	20.5	15.5	15.8	9.8	3.9	7.6	4.4	5.6
Other electrical equipment	S2469	3.2	3.4	4.3	7.4	5.2	3.8	3.0	4.7	2.9
Television and radio transmitters and apparatus	S2472	-0.5	-0.5	-0.7	-0.1	-1.5	2.3	3.5	3.8	5.0
Medical and surgical equipment	S2481	0.7	0.0	0.4	-0.4	1.2	4.1	5.7	6.2	3.7
Measuring, testing and navigating instruments	S2482	-7.8	-7.7	-8.3	-6.4	1.4	6.3	15.5	16.2	15.0
Optical instruments and photographic equipment	S2483	-0.3	1.0	-1.9	-0.6	0.8	-1.2	6.0	2.4	1.8
Bodies for motor vehicles and trailers	S2492	6.0	4.8	3.6	7.3	9.0	10.8	11.4	5.5	3.5
Other plant, machinery and equipment	S2999	-0.8	-1.8	-1.3	-2.5	-2.4	-3.2	-1.4	5.3	4.4
<b>ALL GROUPS</b>	S2GG	2.3	2.3	2.5	3.1	3.8	4.1	4.9	4.1	2.3

(1) This index does not purport to reflect all price changes in building work because of measurement difficulties, particularly with respect to margins and discounts on labour and material prices.