

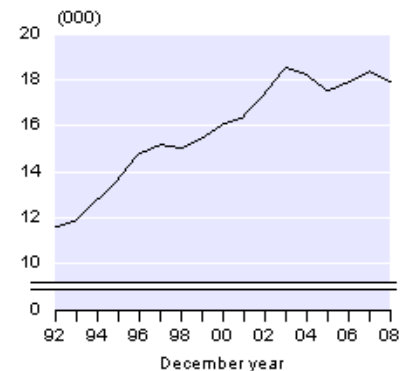
Embargoed until 10:45am – 16 June 2009

Abortions: Year ended December 2008

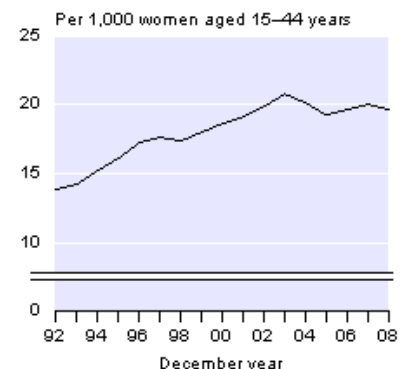
Key points

- 17,940 abortions were performed in New Zealand in 2008, down from 18,380 in 2007 and the peak of 18,510 in 2003.
- The general abortion rate was 19.7 abortions per 1,000 women aged 15–44 years in 2008, down from 20.1 per 1,000 in 2007 and lower than the peak rate of 20.8 abortions per 1,000 in 2003.
- Women aged 20–24 years had the highest abortion rate (37 abortions per 1,000 women aged 20–24 years) in 2008.
- The median age of women having an abortion was 24.3 years in 2008.
- In 2008, most abortions (63 percent) were a woman's first abortion.

Number of Abortions
1992–2008



General Abortion Rate
1992–2008



Geoff Bascand
Government Statistician

16 June 2009
ISSN 1178-0193

See also [Abortions: Year ended December 2008 – Media release.](#)

Commentary

Number of abortions

A total of 17,940 induced abortions were performed in New Zealand in the year ended December 2008, down from 18,380 in 2007, but up from 15,030 a decade earlier in 1998. The highest number of induced abortions recorded in New Zealand was 18,510 in 2003.

Abortion rates

It is important to note that the legal environment and the provision of abortion services affect comparisons over time in abortion rates and in the number of abortions.

The general abortion rate (abortions per 1,000 women aged 15–44 years) decreased from 20.1 in 2007 to 19.7 in 2008. The general abortion rate was 17.4 per 1,000 in 1998.

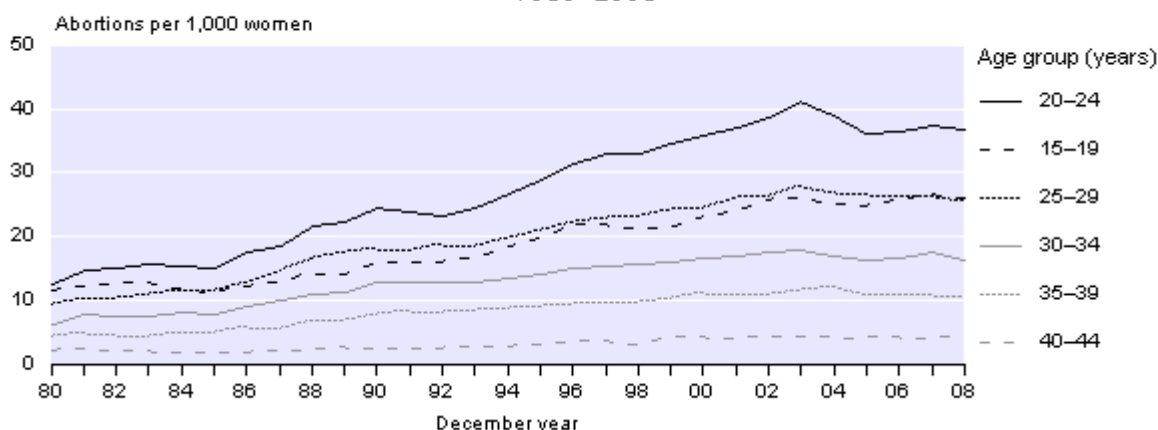
The total abortion rate measures the average number of abortions that 1,000 women would have during their life (based on current age-specific abortion rates). The total abortion rate for 2008 was 601 abortions per 1,000 women, which is 13 percent higher than the rate of 532 per 1,000 recorded a decade earlier in 1998. However, the 2008 rate is 7 percent lower than the peak rate of 648 per 1,000 in 2003.

Abortions by age of women

Women aged 20–24 years have more abortions than any other age group, accounting for approximately 3 out of 10 abortions in any year. Women in this age group also had the highest abortion rate (37 abortions per 1,000 women aged 20–24 years in 2008). Teenagers (15–19 years) and women aged 25–29 years both had abortion rates of 26 per 1,000 in 2008. The median age (half are younger, and half older, than this age) of women having an abortion was 24.3 years in 2008 and had been stable at around 25 years over the previous 20 years.

Age-specific Abortion Rates

1980–2008



Proportion of known pregnancies ending in an abortion

The abortion ratio averaged 220 abortions per 1,000 known pregnancies in both 2007 and 2008, down from 250 per 1,000 in 2003. Known pregnancies include live births, stillbirths and induced abortions combined.

Previous abortions

In 2008, 63 percent of abortions were a woman's first abortion, compared with 69 percent in 1998. Twelve percent of women having an abortion in 2008 had had two or more previous abortions, compared with 8 percent in 1998.

Duration of pregnancy

In 2008, 46 percent of abortions were performed in the ninth week of gestation or earlier, compared with 31 percent in 2003. About 20 percent were performed in the tenth week of gestation, a similar proportion to five years ago.

Ethnicity

Women having an abortion can state more than one ethnicity on the abortion notification form. For this reason, some abortions are counted more than once in the ethnicity figures and ethnic group totals sum to more than the total number of abortions.

In 2008, there were 10,500 abortions to women who identified with the European ethnic group (either as their only ethnic group or as one of their ethnic groups). There were 4,250 abortions to women who identified with the Māori ethnic group, 2,880 women identified with the Asian ethnic group, 2,230 women identified with the Pacific ethnic group and 210 women identified with the MELAA (Middle Eastern, Latin American and African) grouping. Of the 30 women in the 'Other' ethnic group, almost all identified with the New Zealander ethnic group.

International comparisons

Statistical coverage and laws relating to induced abortion affect international comparisons of abortion statistics. Consequently, differences between the abortion rate for New Zealand and other countries should be interpreted with care.

International data for 2008 is not available for many countries, so comparisons have generally been made using 2007 data. In 2007, the general abortion rate (abortions per 1,000 women aged 15–44 years) for New Zealand was 20.1 per 1,000. The following countries had lower rates: Germany (7.2), the Netherlands (8.6), Finland (10.7), Scotland (13.0), Denmark (14.3 in 2006), Norway (16.1), France (16.8 in 2006), and England and Wales (17.9). In Australia (19.3 in 2004), the United States (19.4 in 2005), and Sweden (21.0), the abortion rate was similar to New Zealand's.

For technical information contact:

Anne Howard

Christchurch 03 964 8700

Email: demography@stats.govt.nz

Technical notes

Abortion statistics

Abortion is defined as foetal loss excluding stillbirths, usually during the first 20 weeks of gestation. Induced abortions are those initiated voluntarily with the intention of terminating a pregnancy. All other abortions are called spontaneous abortions, even if an external cause is involved, such as injury or high fever.

All abortion statistics and derived abortion rates included in this release are based on legally induced abortions registered in New Zealand. No information is available on spontaneous or illegal abortions.

Grounds for abortion

In New Zealand the grounds on which an abortion is permitted are described in the Contraception, Sterilisation, and Abortion Act 1977 and in section 187A of the Crimes Act 1961.

In any year, 98–99 percent of all abortions are performed because of serious danger to the mental health of the woman.

Source of abortion statistics

Abortion information is obtained from the Abortion Supervisory Committee. For every abortion carried out as approved under the Contraception, Sterilisation, and Abortion Act 1977, a 'Notification of Abortion' form (ASC Form No. 4) must be filled in by the licensed abortion institution. This is then sent to the Abortion Supervisory Committee.

Changes in the collection of abortion statistics

Changes have been made in the collection of ethnicity data. Before 2006, the MELAA (Middle Eastern, Latin American and African) ethnic group was included in the 'Other' ethnic group. From 2006, statistics on the MELAA group have been produced separately. In addition, the ethnic response of 'New Zealander' was coded and included in the 'Other' ethnic group for the first time in 2006. In previous years, New Zealanders were included in the European ethnic group. Ethnicity data from 2006 is not strictly comparable with ethnicity data for earlier years.

Regional data

In 2004, a new question asking for 'domicile code' was added to ASC Form No 4. However, due to different rates of 'not stated region' across hospitals, regional data should be interpreted with care. The New Zealand Health Information Service base their health domicile codes on the area unit pattern. They are used to represent a healthcare user's usual residential address. The code used from 1 July 2002 is based on the 2001 six-digit area unit code (as used in the Census of Population and Dwellings).

Live births

Live births refer to live births registered in New Zealand by date of registration.

Stillbirths

Stillbirth refers to the birth of a dead foetus that either weighs 400g or more when issued from its mother; or is issued from its mother after the 20th week of gestation.

Rounding

Abortion figures contained in the tables attached to this release are unrounded. All other figures have been rounded. Derived figures (for example, abortion rates and ratios) have been calculated using unrounded data.

More information

For more information, follow the [link](#) from the Technical notes of this release on the Statistics New Zealand website.

Copyright

Information obtained from Statistics NZ may be freely used, reproduced, or quoted unless otherwise specified. In all cases Statistics NZ must be acknowledged as the source.

Liability

While care has been used in processing, analysing and extracting information, Statistics NZ gives no warranty that the information supplied is free from error. Statistics NZ shall not be liable for any loss suffered through the use, directly or indirectly, of any information, product or service.

Timing

Timed statistical releases are delivered using postal and electronic services provided by third parties. Delivery of these releases may be delayed by circumstances outside the control of Statistics NZ. Statistics NZ accepts no responsibility for any such delays.

Tables

The following tables are printed with this Hot Off The Press and can also be downloaded from the Statistics New Zealand website in Excel format. If you do not have access to Excel, you may use the [Excel file viewer](#) to view, print and export the contents of the file.

1. Induced abortions, rates and ratios, 1980–2008
2. Induced abortions by previous abortions, 1991–2008
3. Induced abortions by age of woman, 1991–2008
4. Abortion rates by age of woman, 1991–2008
5. Induced abortions by previous live births, 1991–2008
6. Induced abortions by duration of pregnancy, 1991–2008
7. Induced abortions by ethnicity of woman, 2002–2008
8. General abortion rate, New Zealand and selected low fertility countries, 1998–2007

Abortions: Year ended December 2008

Table 1

**Induced Abortions, Rates and Ratios
1980–2008**

December year	Induced abortions ⁽¹⁾	Crude abortion rate ⁽²⁾	General abortion rate ⁽³⁾	Abortion ratio ⁽⁴⁾⁽⁵⁾
Five-yearly				
1980	5,945	1.9	8.5	105
1985	7,130	2.2	9.3	120
1990	11,173	3.3	14.0	156
Yearly				
1991	11,613	3.3	14.0	162
1992	11,595	3.3	13.9	163
1993	11,893	3.3	14.3	168
1994	12,835	3.5	15.3	182
1995	13,652	3.7	16.1	191
1996	14,805	4.0	17.3	204
1997	15,208	4.0	17.6	208
1998	15,029	3.9	17.4	207
1999	15,501	4.0	18.0	213
2000	16,103	4.2	18.7	220
2001	16,410	4.2	19.1	226
2002	17,380	4.4	19.9	242
2003	18,511	4.6	20.8	247
2004	18,211	4.5	20.2	237
2005	17,531	4.2	19.3	232
2006	17,934	4.3	19.6	231
2007	18,382	4.3	20.1	222
2008	17,940	4.2	19.7	217

(1) Induced abortions registered in New Zealand. (Obtained from the Abortion Supervisory Committee.)

(2) Per 1,000 mean estimated population.

(3) Per 1,000 mean estimated number of women aged 15–44 years.

(4) Per 1,000 live births, stillbirths and abortions.

(5) The abortion ratio for 1998 is based on the total number of birth notifications received by the Department of Internal Affairs. The abortion ratio for all other years is based on the number of births registered.

Note: Abortion rates from 1991 onwards are based on the mean estimated resident population. Before 1991, abortion rates are based on the mean estimated de facto population.

Abortions: Year ended December 2008

Table 2

**Induced Abortions by Previous Abortions⁽¹⁾
1991–2008**

December year	Previous abortions						Total abortions
	None		One		Two or more		
	Number	Percent	Number	Percent	Number	Percent	
1991	8,913	76.8	2,163	18.6	537	4.6	11,613
1992	8,716	75.2	2,249	19.4	630	5.4	11,595
1993	8,813	74.1	2,340	19.7	740	6.2	11,893
1994	9,400	73.2	2,613	20.4	822	6.4	12,835
1995	9,806	71.8	2,892	21.2	954	7.0	13,652
1996	10,576	71.4	3,162	21.4	1,067	7.2	14,805
1997	10,667	70.1	3,356	22.1	1,185	7.8	15,208
1998	10,302	68.5	3,504	23.3	1,223	8.1	15,029
1999	10,442	67.4	3,710	23.9	1,349	8.7	15,501
2000	10,710	66.5	3,851	23.9	1,542	9.6	16,103
2001	10,830	66.0	3,961	24.1	1,619	9.9	16,410
2002	11,458	65.9	4,164	24.0	1,758	10.1	17,380
2003	12,169	65.7	4,473	24.2	1,869	10.1	18,511
2004	11,696	64.2	4,490	24.7	2,025	11.1	18,211
2005	11,210	63.9	4,345	24.8	1,976	11.3	17,531
2006	11,548	64.4	4,360	24.3	2,026	11.3	17,934
2007	11,884	64.7	4,380	23.8	2,118	11.5	18,382
2008	11,312	63.1	4,469	24.9	2,159	12.0	17,940

(1) Induced abortions registered in New Zealand. (Obtained from the Abortion Supervisory Committee.)

Abortions: Year ended December 2008

Table 3

**Induced Abortions by Age of Woman⁽¹⁾
1991–2008**

December year	Age group (years)								
	11–14	15–19	20–24	25–29	30–34	35–39	40–44	45+	All ages
Number									
1991	43	2,283	3,450	2,592	1,845	1,085	300	15	11,613
1992	42	2,232	3,398	2,661	1,869	1,063	308	22	11,595
1993	52	2,250	3,575	2,608	1,920	1,142	322	24	11,893
1994	43	2,457	3,900	2,787	2,056	1,214	350	28	12,835
1995	42	2,594	4,164	2,985	2,158	1,282	390	37	13,652
1996	60	2,909	4,397	3,239	2,315	1,419	430	36	14,805
1997	56	2,906	4,484	3,378	2,369	1,502	492	21	15,208
1998	65	2,832	4,355	3,381	2,368	1,559	444	25	15,029
1999	56	2,846	4,477	3,447	2,435	1,642	560	38	15,501
2000	74	3,107	4,548	3,399	2,496	1,823	613	43	16,103
2001	66	3,240	4,728	3,450	2,555	1,730	593	48	16,410
2002	78	3,602	5,124	3,450	2,676	1,715	686	49	17,380
2003	89	3,757	5,670	3,619	2,800	1,846	692	38	18,511
2004	85	3,758	5,528	3,501	2,644	1,916	721	58	18,211
2005	92	3,718	5,203	3,491	2,520	1,773	687	47	17,531
2006	105	3,978	5,314	3,530	2,497	1,777	691	42	17,934
2007	104	4,173	5,445	3,574	2,547	1,814	667	58	18,382
2008	83	4,097	5,396	3,591	2,290	1,754	675	54	17,940
Percent									
1991	0.4	19.7	29.7	22.3	15.9	9.3	2.6	0.1	100.0
1992	0.4	19.2	29.3	22.9	16.1	9.2	2.7	0.2	100.0
1993	0.4	18.9	30.1	21.9	16.1	9.6	2.7	0.2	100.0
1994	0.3	19.1	30.4	21.7	16.0	9.5	2.7	0.2	100.0
1995	0.3	19.0	30.5	21.9	15.8	9.4	2.9	0.3	100.0
1996	0.4	19.6	29.7	21.9	15.6	9.6	2.9	0.2	100.0
1997	0.4	19.1	29.5	22.2	15.6	9.9	3.2	0.1	100.0
1998	0.4	18.8	29.0	22.5	15.8	10.4	3.0	0.2	100.0
1999	0.4	18.4	28.9	22.2	15.7	10.6	3.6	0.2	100.0
2000	0.5	19.3	28.2	21.1	15.5	11.3	3.8	0.3	100.0
2001	0.4	19.7	28.8	21.0	15.6	10.5	3.6	0.3	100.0
2002	0.4	20.7	29.5	19.9	15.4	9.9	3.9	0.3	100.0
2003	0.5	20.3	30.6	19.6	15.1	10.0	3.7	0.2	100.0
2004	0.5	20.6	30.4	19.2	14.5	10.5	4.0	0.3	100.0
2005	0.5	21.2	29.7	19.9	14.4	10.1	3.9	0.3	100.0
2006	0.6	22.2	29.6	19.7	13.9	9.9	3.9	0.2	100.0
2007	0.6	22.7	29.6	19.4	13.9	9.9	3.6	0.3	100.0
2008	0.5	22.8	30.1	20.0	12.8	9.8	3.8	0.3	100.0

(1) Induced abortions registered in New Zealand. (Obtained from the Abortion Supervisory Committee.)

Note: Percentages may not sum to stated totals due to rounding.

Abortions: Year ended December 2008

Table 4

**Abortion Rates by Age of Woman⁽¹⁾
1991–2008**

December year	Age group (years)								Total abortion rate ⁽³⁾	Median age of women having an abortion (years) ⁽⁴⁾
	11–14	15–19	20–24	25–29	30–34	35–39	40–44	45+ ⁽²⁾		
1991	0.4	15.9	23.8	17.9	12.8	8.4	2.4	0.2	406.7	25.1
1992	0.4	16.0	23.2	18.7	12.6	8.0	2.5	0.2	406.5	25.2
1993	0.5	16.6	24.3	18.5	12.7	8.4	2.6	0.2	417.4 R	25.1
1994	0.4	18.5	26.7	19.8	13.4	8.7	2.8	0.2	450.7	25.0
1995	0.4	19.7	28.9	20.9	14.0	8.9	3.0	0.3	479.2	25.0
1996	0.6	22.0	31.3	22.2	15.0	9.4	3.2	0.3	519.3	25.0
1997	0.5	21.9	32.8	22.9	15.4	9.7	3.6	0.2	534.2	25.2
1998	0.6	21.3	32.8	23.1	15.5	9.8	3.1	0.2	531.6	25.3
1999	0.5	21.4	34.6	24.1	16.0	10.2	3.9	0.3	554.2 R	25.5
2000	0.7	23.1	35.7	24.5	16.4	11.4	4.1	0.3	580.4	25.4
2001	0.6	23.8	36.9	25.9	16.8	10.9	3.9	0.4	594.9	25.2
2002	0.6	25.6	38.8	26.4	17.4	10.8	4.4	0.4	621.3	24.9
2003	0.7	25.9	41.1	27.9	18.0	11.6	4.3	0.3	648.2	24.7
2004	0.7	25.4	39.1	26.8	17.0	12.0	4.3	0.4	628.7	24.7
2005	0.7	24.6	36.2	26.5	16.4	11.0	4.1	0.3	600.8	24.7
2006	0.9	25.8	36.5	26.4	16.7	10.9	4.1	0.3	608.2	24.5
2007	0.9	26.6	37.2	26.2	17.5	11.0	4.0	0.4	619.0	24.5
2008	0.7	26.0	36.7	25.8	16.2	10.7	4.1	0.3	601.2	24.3

(1) Per 1,000 mean female estimated resident population in each age group.

(2) Per 1,000 mean female estimated resident population aged 45–49 years.

(3) The average number of abortions that 1,000 women would have during their life if they experienced the age-specific abortion rates of a given period (usually a year). It excludes the effect of mortality.

(4) Half of those women having an abortion are younger and half are older than this age.

Note: Abortion rates refer to induced abortions registered in New Zealand.

Symbol:

R revised

Abortions: Year ended December 2008

Table 5

Induced Abortions by Previous Live Births⁽¹⁾
1991–2008

December year	Previous live births						Total abortions
	None		One		Two or more		
	Number	Percent	Number	Percent	Number	Percent	
1991	5,810	50.0	2,091	18.0	3,712	32.0	11,613
1992	5,616	48.4	2,152	18.6	3,827	33.0	11,595
1993	5,733	48.2	2,162	18.2	3,998	33.6	11,893
1994	6,186	48.2	2,312	18.0	4,337	33.8	12,835
1995	6,507	47.7	2,555	18.7	4,590	33.6	13,652
1996	7,130	48.2	2,777	18.8	4,898	33.1	14,805
1997	7,189	47.3	2,948	19.4	5,071	33.3	15,208
1998	6,977	46.4	3,082	20.5	4,970	33.1	15,029
1999	7,141	46.1	3,090	19.9	5,270	34.0	15,501
2000	7,547	46.9	3,133	19.5	5,423	33.7	16,103
2001	7,682	46.8	3,148	19.2	5,580	34.0	16,410
2002	8,547	49.2	3,223	18.5	5,610	32.3	17,380
2003	9,451	51.1	3,312	17.9	5,748	31.1	18,511
2004	9,216	50.6	3,366	18.5	5,629	30.9	18,211
2005	8,894	50.7	3,245	18.5	5,392	30.8	17,531
2006	9,078	50.6	3,401	19.0	5,455	30.4	17,934
2007	9,197	50.0	3,582	19.5	5,603	30.5	18,382
2008	8,721	48.6	3,596	20.0	5,623	31.3	17,940

(1) Induced abortions registered in New Zealand. (Obtained from the Abortion Supervisory Committee.)

Abortions: Year ended December 2008

Table 6

Induced Abortions by Duration of Pregnancy⁽¹⁾
1991–2008

December year	Duration of pregnancy (weeks)								Total
	Under 8	8	9	10	11	12	13	14+	
Number									
1991	826	2,662	2,592	2,757	1,113	976	272	415	11,613
1992	715	2,305	2,733	2,868	1,202	935	296	541	11,595
1993	418	2,121	2,704	3,246	1,373	1,155	311	565	11,893
1994	350	1,969	2,741	3,527	1,792	1,420	442	594	12,835
1995	351	1,633	2,354	2,919	2,436	2,322	912	725	13,652
1996	351	1,613	2,559	3,560	2,898	2,316	754	754	14,805
1997	449	1,757	2,747	3,799	2,987	2,064	715	690	15,208
1998	574	1,923	3,189	3,436	2,323	1,913	957	714	15,029
1999	775	1,948	3,047	3,502	2,496	1,935	1,030	768	15,501
2000	854	2,047	3,135	3,564	2,627	2,062	985	829	16,103
2001	925	1,790	2,969	3,622	2,721	2,270	1,227	886	16,410
2002	1,129	1,751	2,773	3,820	3,019	2,633	1,300	955	17,380
2003	1,281	1,824	2,710	3,882	3,456	2,903	1,494	961	18,511
2004	1,263	1,835	3,505	3,933	3,007	2,613	1,164	891	18,211
2005	1,271	1,782	2,928	3,620	3,011	2,640	1,350	929	17,531
2006	1,526	1,843	3,012	3,729	2,990	2,634	1,259	941	17,934
2007	1,478	2,413	3,558	3,671	3,131	2,631	478	1,022	18,382
2008	1,687	2,875	3,743	3,535	2,655	2,026	438	981	17,940
Percent									
1991	7.1	22.9	22.3	23.7	9.6	8.4	2.3	3.6	100.0
1992	6.2	19.9	23.6	24.7	10.4	8.1	2.6	4.7	100.0
1993	3.5	17.8	22.7	27.3	11.5	9.7	2.6	4.8	100.0
1994	2.7	15.3	21.4	27.5	14.0	11.1	3.4	4.6	100.0
1995	2.6	12.0	17.2	21.4	17.8	17.0	6.7	5.3	100.0
1996	2.4	10.9	17.3	24.0	19.6	15.6	5.1	5.1	100.0
1997	3.0	11.6	18.1	25.0	19.6	13.6	4.7	4.5	100.0
1998	3.8	12.8	21.2	22.9	15.5	12.7	6.4	4.8	100.0
1999	5.0	12.6	19.7	22.6	16.1	12.5	6.6	5.0	100.0
2000	5.3	12.7	19.5	22.1	16.3	12.8	6.1	5.1	100.0
2001	5.6	10.9	18.1	22.1	16.6	13.8	7.5	5.4	100.0
2002	6.5	10.1	16.0	22.0	17.4	15.1	7.5	5.5	100.0
2003	6.9	9.9	14.6	21.0	18.7	15.7	8.1	5.2	100.0
2004	6.9	10.1	19.2	21.6	16.5	14.3	6.4	4.9	100.0
2005	7.3	10.2	16.7	20.6	17.2	15.1	7.7	5.3	100.0
2006	8.5	10.3	16.8	20.8	16.7	14.7	7.0	5.2	100.0
2007	8.0	13.1	19.4	20.0	17.0	14.3	2.6	5.6	100.0
2008	9.4	16.0	20.9	19.7	14.8	11.3	2.4	5.5	100.0

(1) Induced abortions registered in New Zealand. (Obtained from the Abortion Supervisory Committee.)

Note: Percentages may not sum to stated totals due to rounding.

Abortions: Year ended December 2008

Table 7

**Induced Abortions by Ethnicity of Woman⁽¹⁾
2002–2008**

Ethnic group ⁽²⁾	December year						
	2002	2003	2004	2005	2006	2007	2008
European ⁽³⁾	9,763	10,271	10,358	9,732	9,859	10,546	10,499
Māori	3,899	4,053	3,906	3,882	4,097	4,304	4,250
Pacific	2,009	2,161	2,060	2,050	2,134	2,289	2,230
Asian	2,860	3,502	3,175	2,957	2,935	2,947	2,875
MELAA ⁽⁴⁾	213	203	206
Other (pre 2006) ⁽⁵⁾	152	193	214	220
Other (from 2006) ⁽⁶⁾	51	48	25
Not stated	0	3	7	149	211	246	64
Induced abortions	17,380	18,511	18,211	17,531	17,934	18,382	17,940

(1) Induced abortions registered in New Zealand. (Obtained from the Abortion Supervisory Committee.)

(2) Each abortion has been included in every ethnic group stated. For this reason, some abortions are counted more than once and responses sum to more than the total number of abortions.

(3) Before 2006, New Zealanders were included in the European ethnic group.

(4) Middle Eastern, Latin American and African.

(5) Includes MELAA and other ethnicities not elsewhere included.

(6) Includes New Zealanders and other ethnicities not elsewhere included.

Symbol:

... Not applicable

Table 8

General Abortion Rate⁽¹⁾
New Zealand and selected low fertility countries
 1998–2007

Country	1998	1999	2000	2001	2002	2003	2004	2005	2006	2007
Australia ⁽²⁾	20.8	20.4	20.6	20.8	20.3	19.7	19.3
Denmark	15.1	15.1	14.6	14.3	14.1	14.7	14.4	14.4	14.3	..
England and Wales ⁽³⁾	16.6	16.2	16.3	16.3	16.2	16.6	16.9	17.0	17.5	17.9
Finland	10.4	10.5	10.7	10.6	10.9	10.8	11.2	11.1	10.8	10.7
France	15.8	15.9	15.6	16.4	16.8	16.5	17.1	16.8	16.8	..
Germany	8.0	7.7	8.0	8.0	7.8	7.6	7.7	7.5	7.3	7.2 P
Netherlands ⁽³⁾	7.1	7.4	8.0	8.4	8.7	8.5	8.7	8.6	8.6	8.6
NEW ZEALAND	17.4	18.0	18.7	19.1	19.9	20.8	20.2	19.3	19.6	20.1
Norway	15.3	15.5	16.0	15.2	14.8	15.1	15.3	15.1 R	15.5	16.1
Scotland ⁽³⁾	11.5	11.2	11.1	11.3	11.1	11.6	11.8	12.0	12.5	13.0
Sweden	18.3	18.1	18.3	18.7	19.6	20.2	20.0	20.2	20.6	21.0
United States	21.5	21.4	21.3	20.9 R	20.5	20.2	19.7	19.4

(1) Per 1,000 mean estimated number of women aged 15–44 years.

(2) Abortions are estimated based on Medicare and hospital morbidity statistics.

(3) Residents only.

Symbols:

P provisional

R revised

.. figures not available

Sources for international statistics:

(a) Chan, A & Sage, L C (2005). Estimating Australia's abortion rates. *MJA (Medical Journal of Australia)*, 182:9, 447–452.

(b) Department of Health (2008). *Statistical Bulletin: Abortion Statistics, England and Wales, 2007*. www.dh.gov.uk [20 May 2009].

(c) Federal Statistics Office, Germany (2008). www.destatis.de [28 May 2008].

(d) Information Services Division, NHS National Services Scotland (2008). *Abortions data*. www.isdscotland.org/isd/1918.html [29 May 2009].

(e) Institut National d'études Démographiques (2009). www.ined.fr [20 May 2009].

(f) Jones, R, Zolna, M, Henshaw, S & Finer, L (2008). Abortion in the United States: Incidence and access to services, 2005. *Perspectives on sexual and reproductive health*, 40 (1): 6–16.

(g) Laws, P J, Grayson, N & Sullivan, E A (2006). *Australia's mothers and babies 2004*. (Perinatal statistics series no. 18). Sydney: AIHW National Perinatal Statistics Unit.

(h) Ministry of Health, Welfare and Sport, Netherlands (2008). *Jaarrapportage 2007 van de wet afbreking zwangerschap*. www.minvws.nl [21 May 2009].

(i) National Institute for Health and Welfare (2009). *Induced abortions 2008 - preliminary data*. www.stakes.fi [20 May 2009].

(j) National Institute for Statistics and Economic Studies, France (2009). www.insee.fr [20 May 2009].

(k) Norwegian Institute of Public Health (2008). *Rapport om Svangerskapsavbrudd for 2007*. www.fhi.no [29 May 2009].

(l) Official Statistics of Sweden (2008). *Statistics - Health and Diseases: Induced Abortions*. www.socialstyrelsen.se [18 April 2008].

(m) Statistics Denmark (2008). "StatBank Denmark". www.statbank.dk [28 May 2008].

(n) Statistics Finland (2009). "Statistical databases". www.tilastokeskus.fi/index_en.html [20 May 2009].

(o) Statistics Norway (2009). www.ssb.no [29 May 2009].