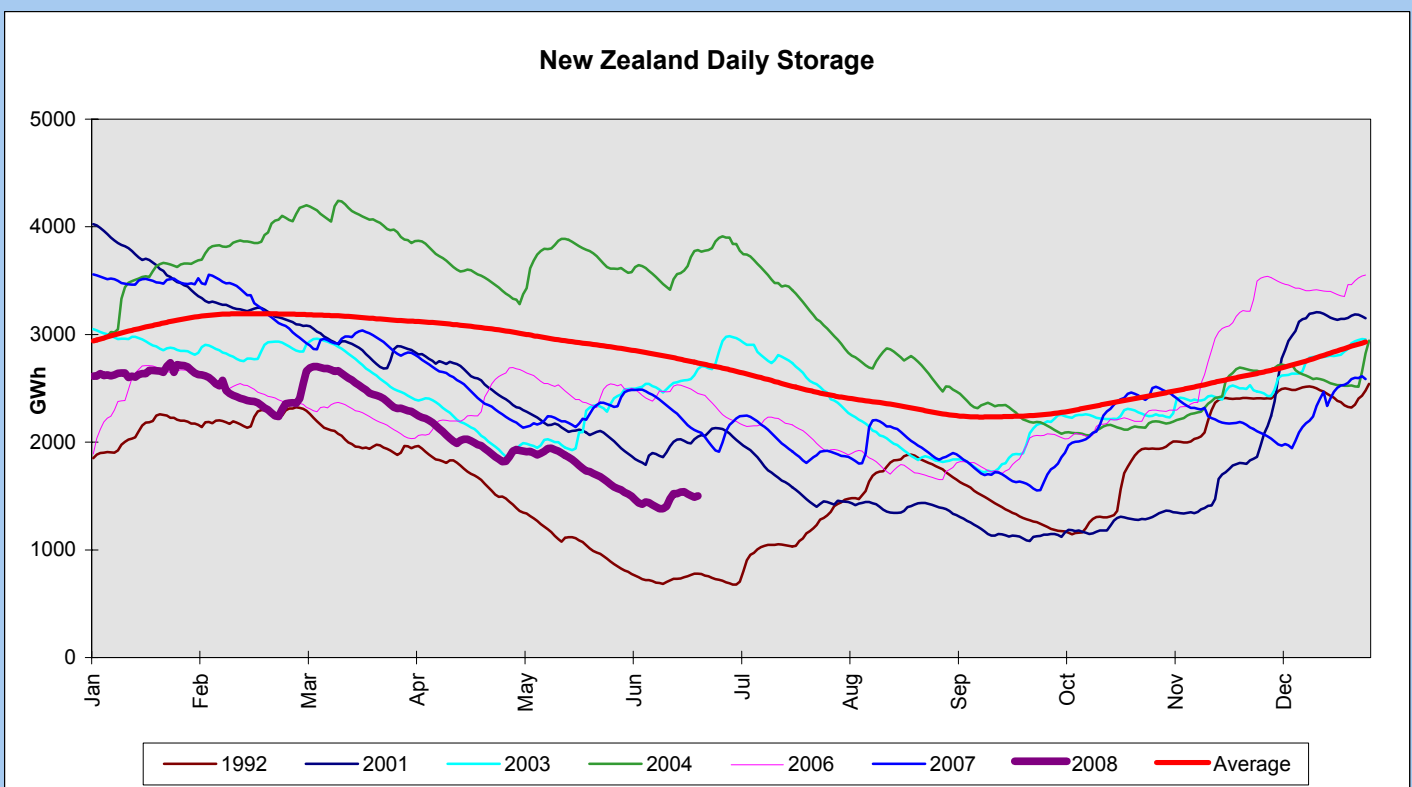
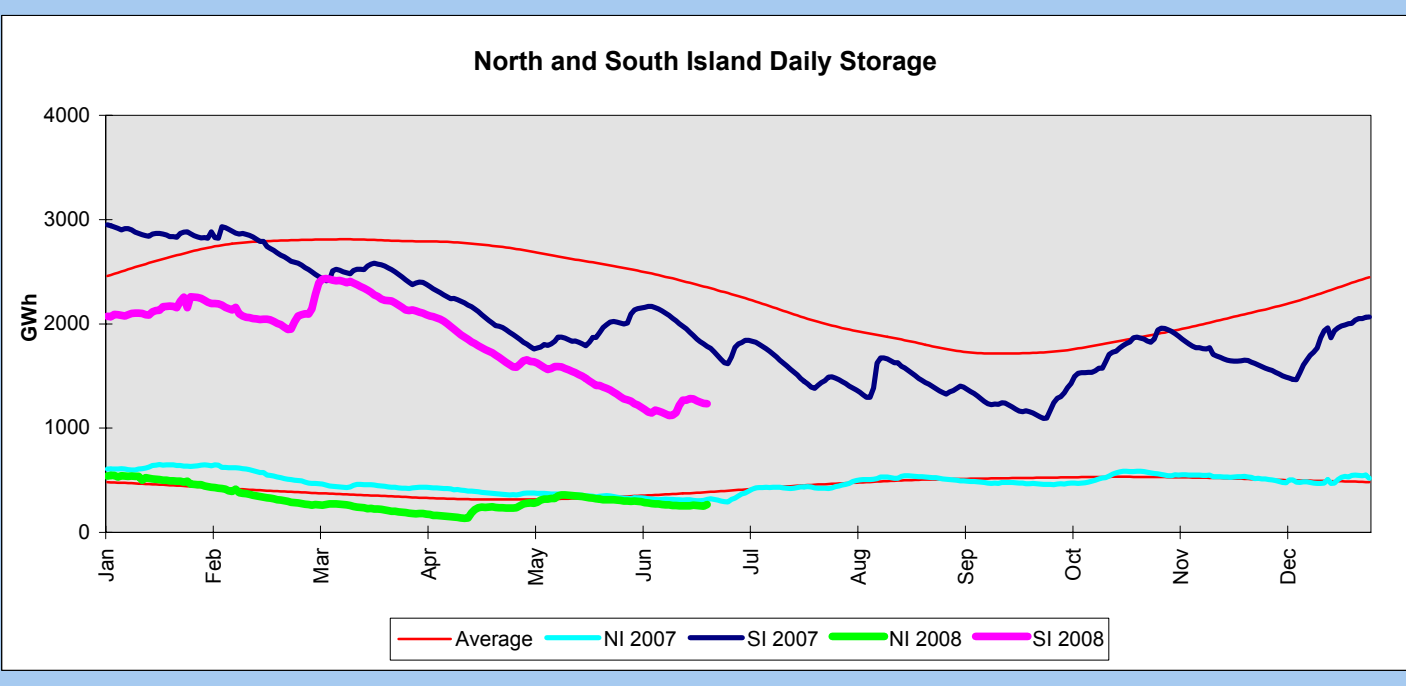
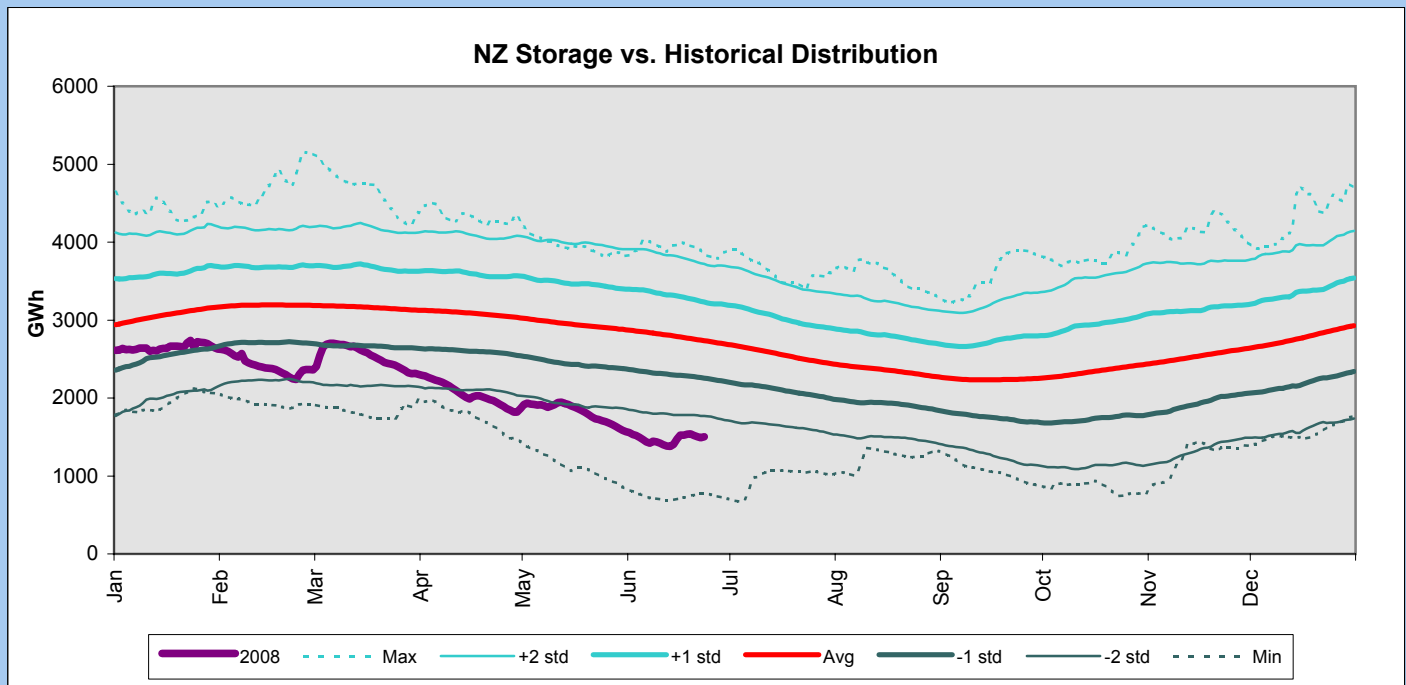
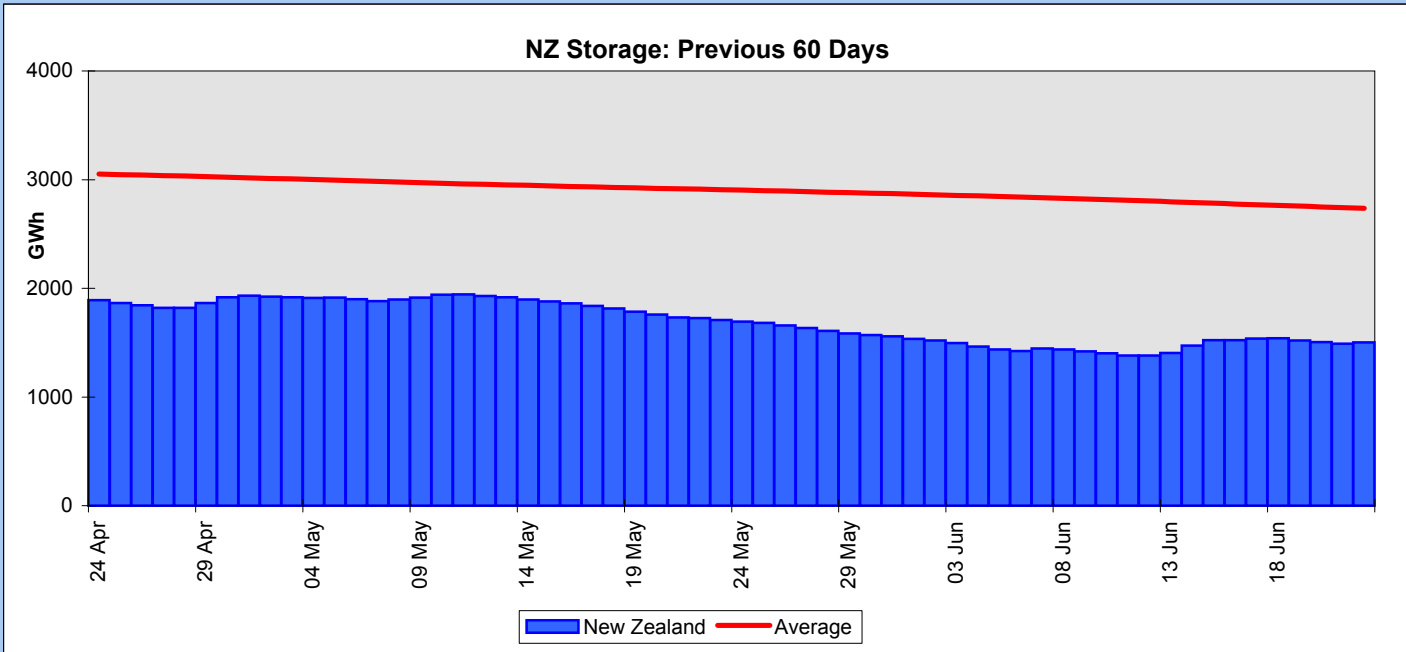


SECTION 1 - STORAGE

Stored Energy (GWh)	22 Jun 08 Stored Energy	Stored Energy As % of Maximum	Stored Energy As % of Average	7 Day Change In Stored Energy	28 Day Change In Stored Energy
Taupo	153	27%	57%	7%	-24%
Waikaremoana	75	52%	92%	0%	-5%
Waitaki	875	34%	51%	2%	-15%
-Tekapo	378	42%	68%	-	-
-Pukaki	492	30%	42%	-	-
-Ohau	5	21%	110%	-	-
Clutha	87	16%	31%	-22%	-32%
-Hawea	23	8%	11%	-	-
-Wanaka (uncontrolled)	40	31%	107%	-	-
-Wakatipu (uncontrolled)	25	21%	76%	-	-
Waiau	222	52%	76%	-10%	57%
-Te Anau	155	58%	81%	-	-
-Manapouri	67	43%	67%	-	-
North Island ²	267	33%	69%	5%	-15%
South Island (controlled) ³	1120	34%	50%	-	-
South Island ⁴	1234	34%	53%	-3%	-10%
New Zealand (controlled) ³	1272	33%	51%	-	-
New Zealand ⁵	1501	34%	55%	-1%	-11%

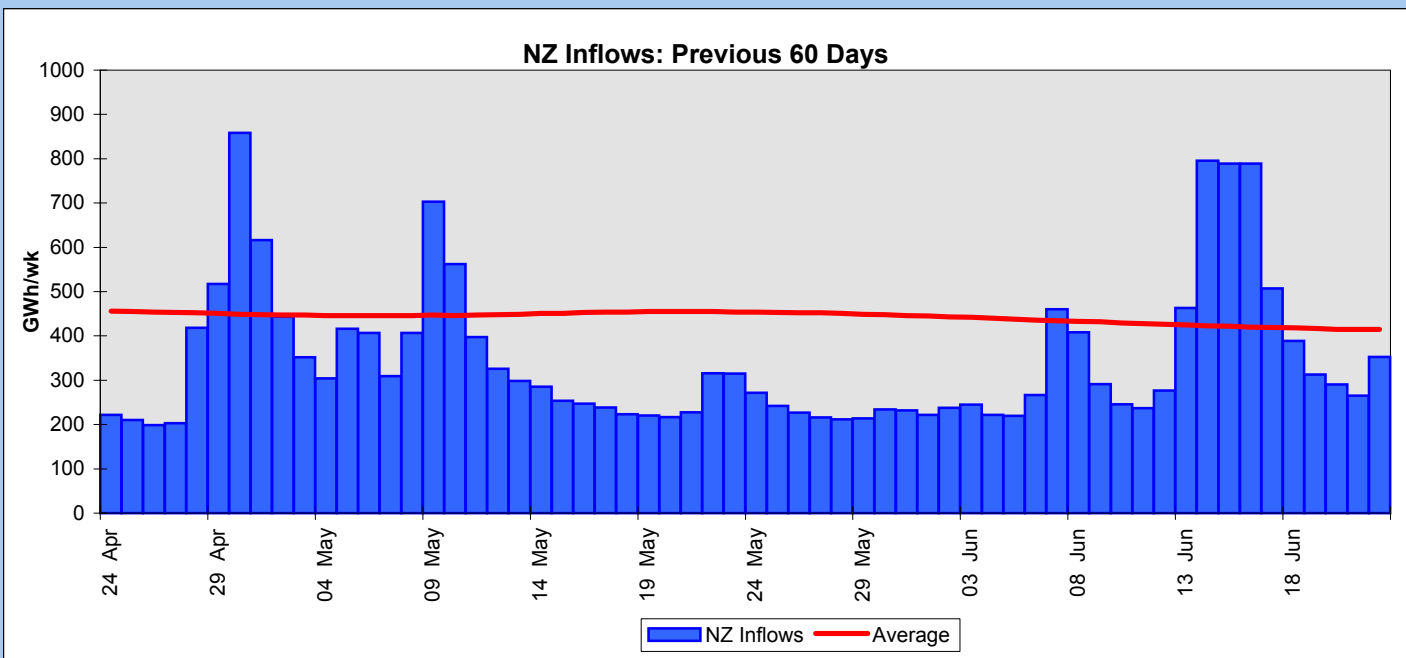
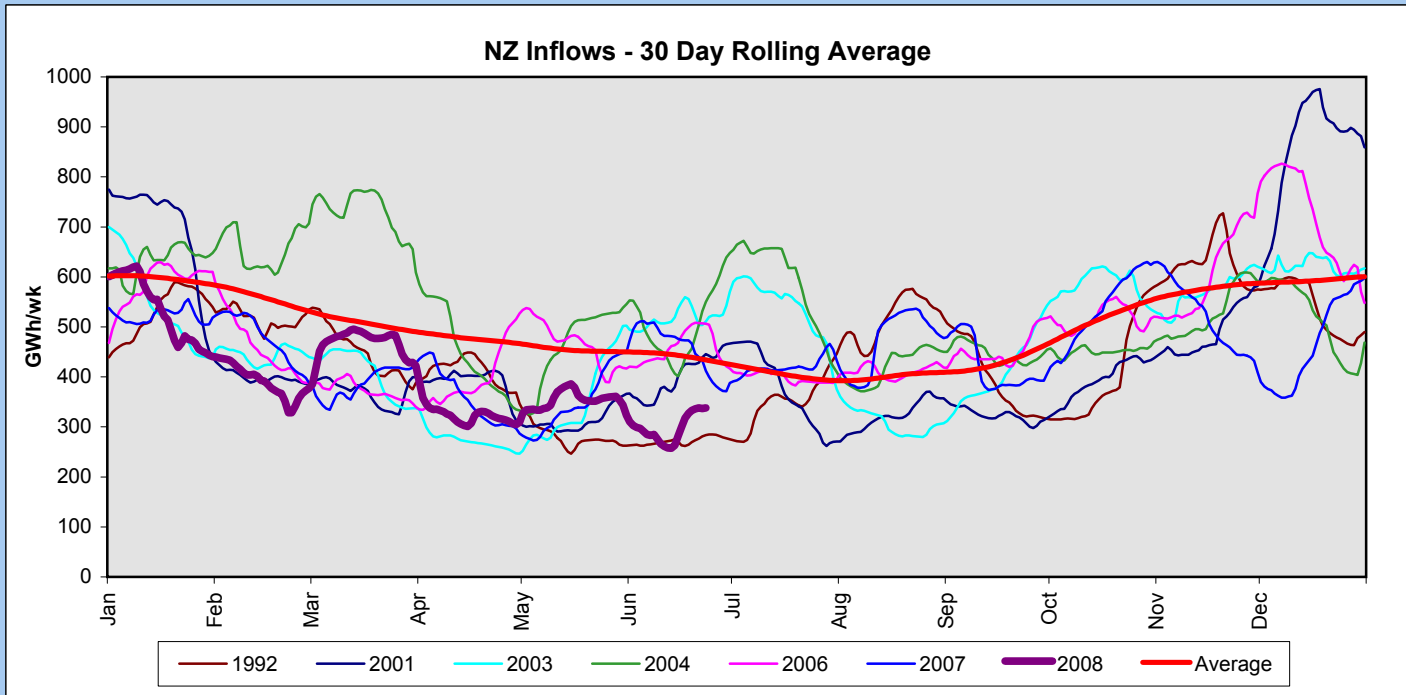
Lake Levels (m)	22 Jun 08 Lake Level	% Full	Minimum Operating Level	Maximum Operating Level
Taupo	356.22	26%	355.85	357.25
Tekapo	705.86	43%	702.10	710.90
Pukaki	522.53	30%	518.20	532.50
Ohau	519.86	22%	519.75	520.25
Hawea	338.64	8%	338.00	346.00
Wanaka (uncontrolled)	277.01	31%	276.20	278.80
Wakatipu (uncontrolled)	309.64	21%	309.30	310.92
Te Anau	201.93	58%	200.86	202.70
Manapouri	177.04	43%	175.86	178.60



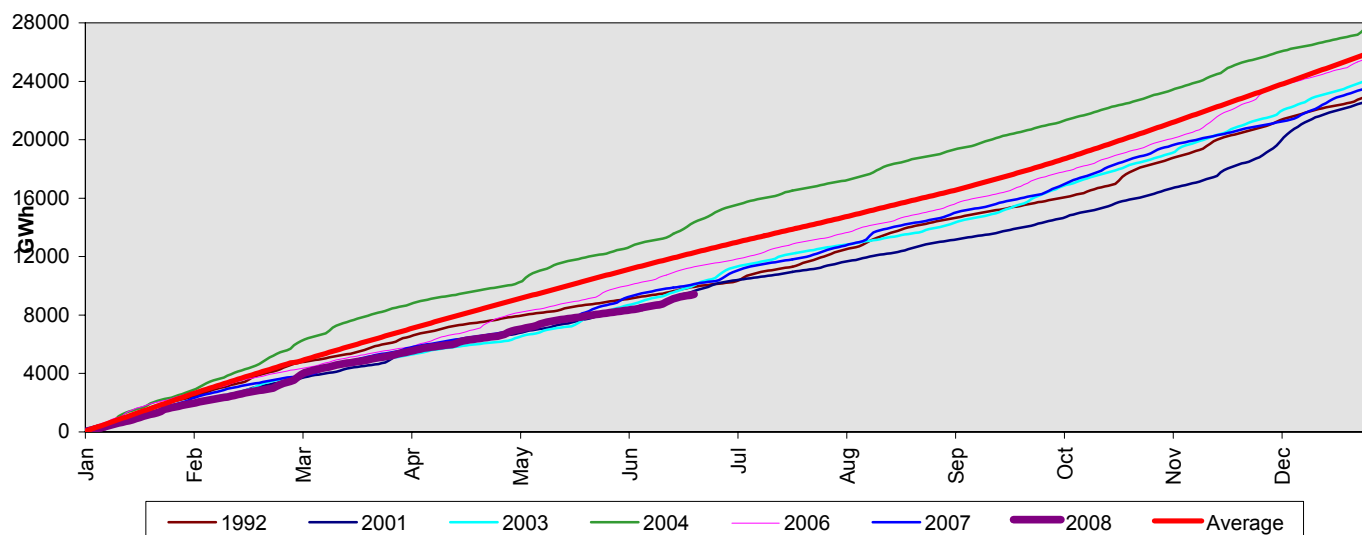


SECTION 2 - INFLOWS

Inflows (GWh/wk)	22 Jun 08 Inflows	Inflows As % of Average	21 Jun 08 Inflows	Avg Daily Inflows Previous 7 Days	7 Day Inflows As % of Average
Taupo & Waikato	84	133%	37	49	78%
Waikaremoana ¹	9	133%	9	9	133%
Waitaki	82	35%	77	92	40%
Clutha	32	38%	35	56	66%
Waiau	62	59%	40	70	67%
North Island ²	150	113%	86	99	75%
South Island ³	203	43%	180	316	67%
New Zealand ⁴	353	59%	265	415	70%

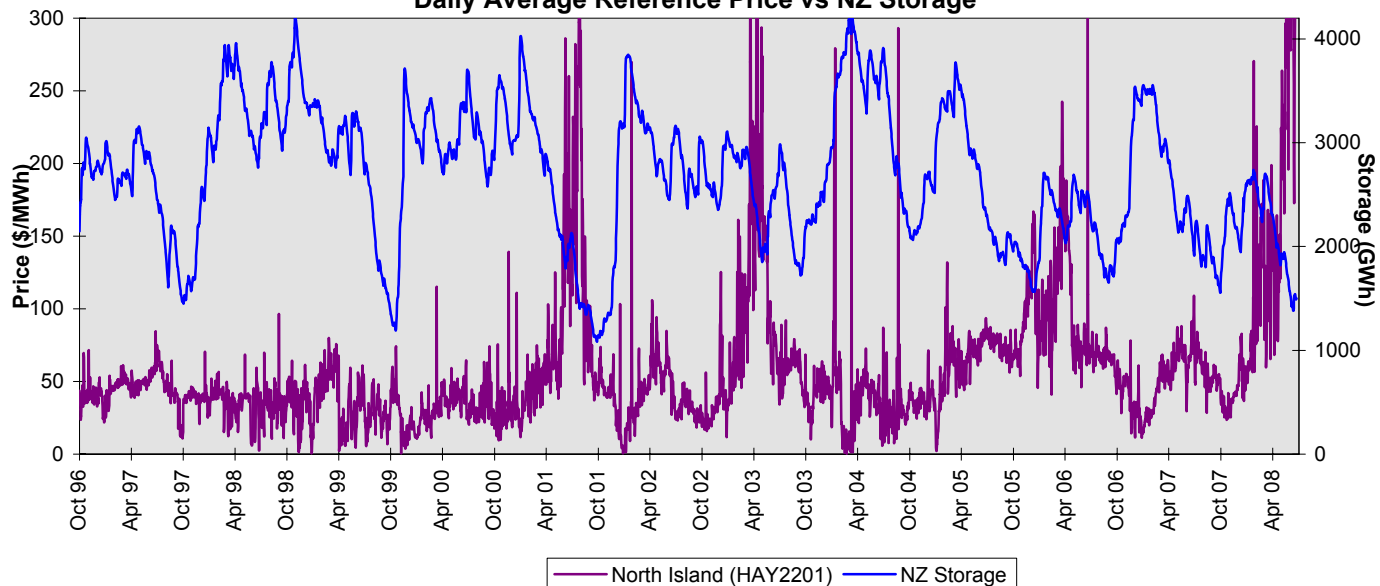


Cumulative National Inflows



SECTION 3 - PRICE

Daily Average Reference Price vs NZ Storage



Notes:

1. Waikaremoana data is set at long term base storage and inflow levels. (17/8/01 NIWA revision).
2. North Island data contains estimates based on historic correlations and includes Other NI catchments.
3. The controlled subtotals are derived using the same definitions as for the Minzone.
4. South Island data contains estimates based on historic correlations and includes Other SI catchments.
5. New Zealand data contains estimates based on historic correlations and includes Other NI and SI catchments.

Sources:

M-co, NIWA

Disclaimer:

The purpose of this document is to outline current and historical hydrological data relevant to NZ's electricity system. While M-co has endeavoured to ensure there are no inaccuracies or omissions in this document, it can accept no liability or responsibility for any loss, costs or expenses, of whatever nature, arising out of, or connected with the provision or use of this document.

Please Note:

The above Hydro Summary is provided as a service for subscribers only. Please do not distribute this report outside of your company, without prior permission from the COMIT Administrator.

