

# Queenstown Airport - Monthly Passenger Traffic

## March 2018



More information available at [www.queenstownairport.co.nz/stats](http://www.queenstownairport.co.nz/stats)

### Total passengers for month

**198,983**  
up 15%

Passenger numbers were up 15% on last year with strong growth over the whole month.

### International passengers

**49,620**  
up 23%

Traffic across the Tasman was up 23%.

### Total passengers last 12 months

**2,081,000**  
up 14%

12-month passenger numbers showed strong growth on both domestic and international routes.

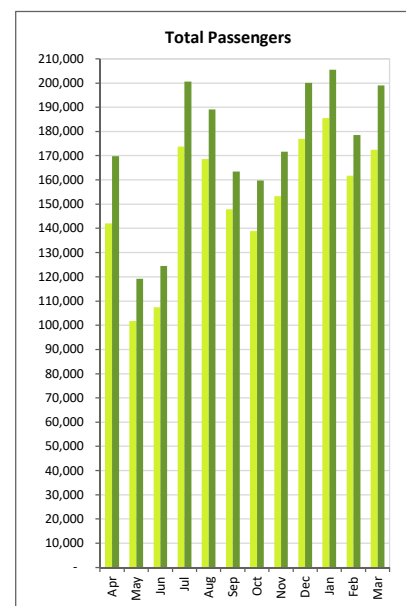
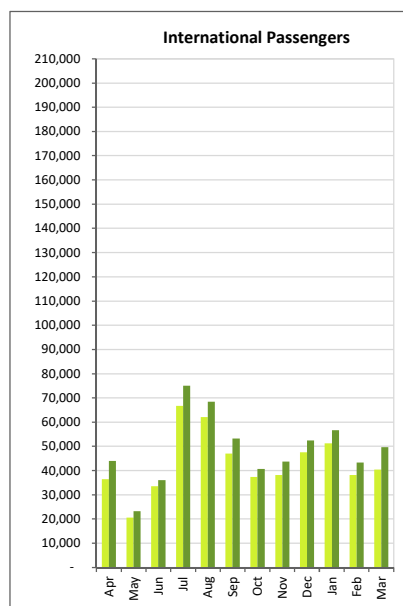
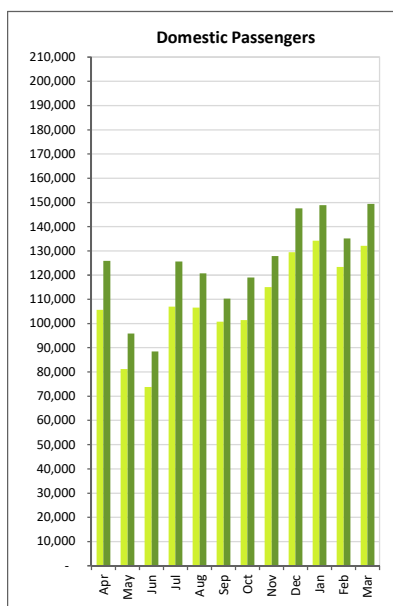
### Domestic passengers

**149,363**  
up 13%

Passenger growth was up 13% compared to last March.

## Monthly Passengers - Arriving and Departing

— monthly passengers this year  
— monthly passengers previous year

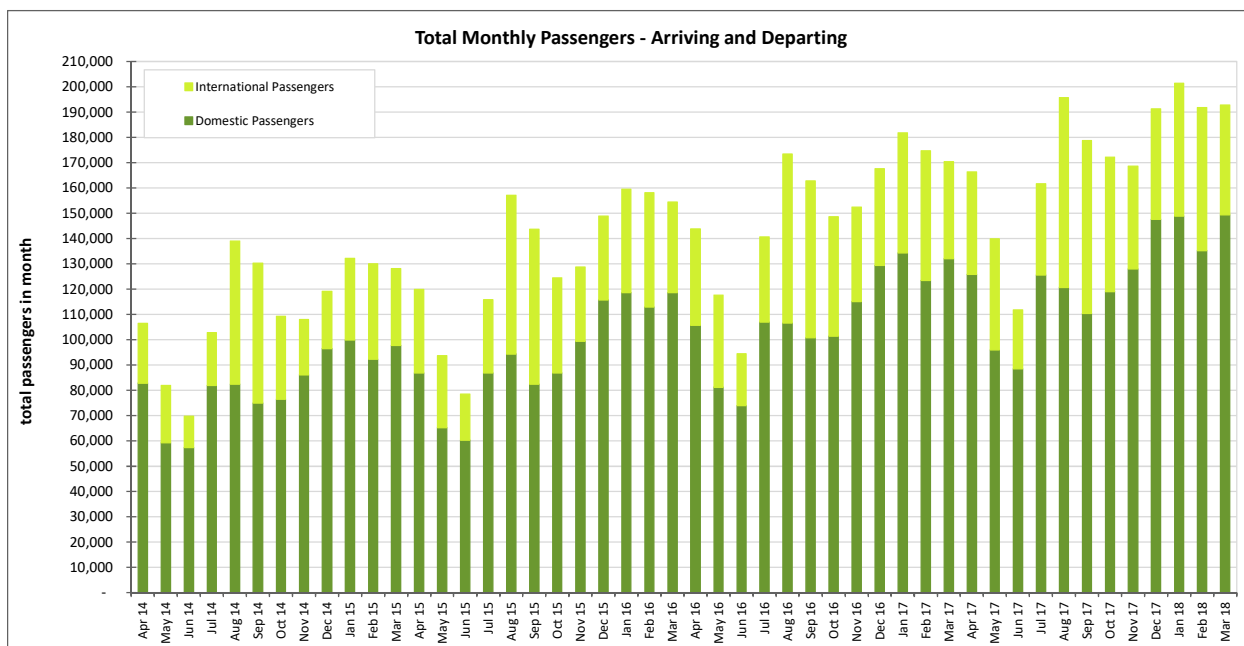


Domestic Passengers				
	Current Yr	Previous Yr	Change	
	2017/18	2016/17	incr pax	incr %
April	125,825	105,671	20,154	19.1%
May	95,914	81,246	14,668	18.1%
June	88,466	73,861	14,605	19.8%
July	125,558	106,952	18,606	17.4%
August	120,655	106,557	14,098	13.2%
September	110,329	100,724	9,605	9.5%
October	119,038	101,483	17,555	17.3%
November	127,913	115,105	12,808	11.1%
December	147,563	129,410	18,153	14.0%
January	148,865	134,235	14,630	10.9%
February	135,152	123,401	11,751	9.5%
March	149,363	132,086	17,277	13.1%
12 month total	1,494,641	1,310,731	183,910	14.0%

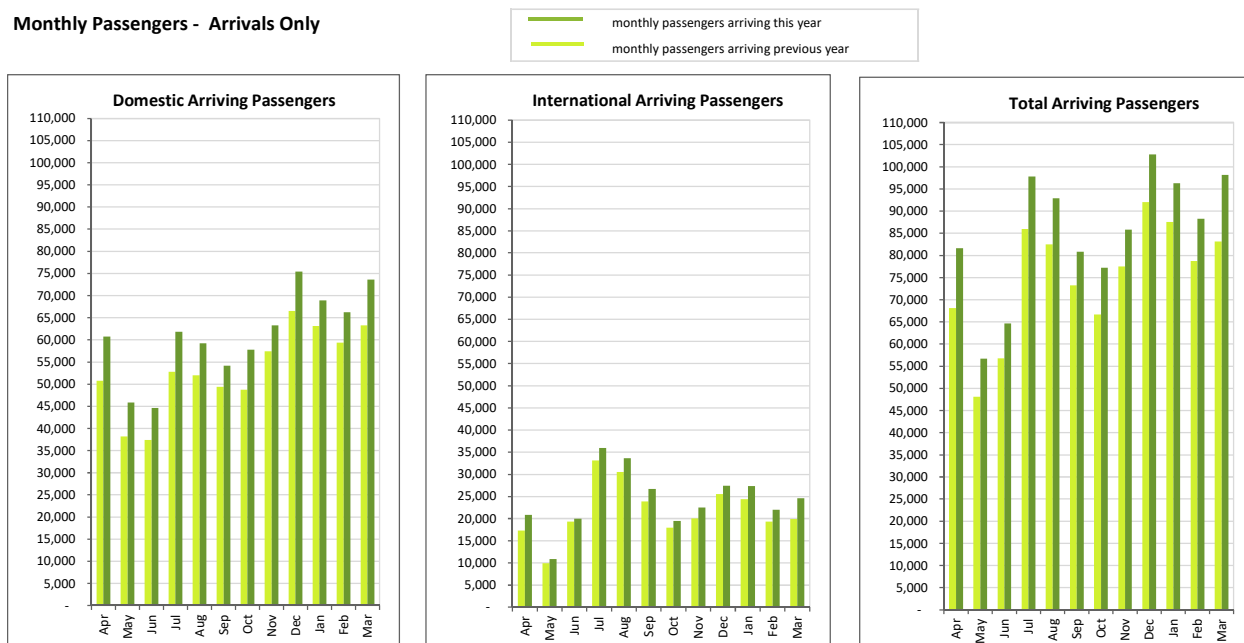
International Passengers				
	Current Yr	Previous Yr	Change	
	2017/18	2016/17	incr pax	incr %
April	43,976	36,414	7,562	20.8%
May	23,317	20,574	2,743	13.3%
June	35,980	33,629	2,351	7.0%
July	75,004	66,779	8,225	12.3%
August	68,385	62,098	6,287	10.1%
September	53,169	47,114	6,055	12.9%
October	40,640	37,355	3,285	8.8%
November	43,722	38,160	5,562	14.6%
December	52,519	47,582	4,937	10.4%
January	56,633	51,244	5,389	10.5%
February	43,394	38,268	5,126	13.4%
March	49,620	40,412	9,208	22.8%
12 month total	586,359	519,629	66,730	12.8%

Total Passengers				
	Current Yr	Previous Yr	Change	
	2017/18	2016/17	incr pax	incr %
April	169,801	142,085	27,716	19.5%
May	119,231	101,820	17,411	17.1%
June	124,446	107,490	16,956	15.8%
July	200,562	173,731	26,831	15.4%
August	189,040	168,655	20,385	12.1%
September	163,498	147,838	15,660	10.6%
October	159,678	138,838	20,840	15.0%
November	171,635	153,265	18,370	12.0%
December	200,082	176,992	23,090	13.0%
January	205,498	185,479	20,019	10.8%
February	178,546	161,669	16,877	10.4%
March	198,983	172,498	26,485	15.4%
12 month total	2,081,000	1,830,360	250,640	13.7%

Airports report passengers and aircraft as "movements". Passenger movements count both arrivals and departures i.e. 1 passenger is counted as 2 movements - their arrival and then their departure.



### Monthly Passengers - Arrivals Only



Domestic - Arriving Passengers				
	Current Yr	Previous Yr	Change	
	2017/18	2016/17	incr pax	incr %
April	60,767	50,794	9,973	19.6%
May	45,872	38,202	7,670	20.1%
June	44,656	37,406	7,250	19.4%
July	61,827	52,846	8,981	17.0%
August	59,238	51,954	7,284	14.0%
September	54,176	49,412	4,764	9.6%
October	57,773	48,752	9,021	18.5%
November	63,301	57,431	5,870	10.2%
December	75,439	66,510	8,929	13.4%
January	68,961	63,147	5,814	9.2%
February	66,246	59,370	6,876	11.6%
March	73,612	63,289	10,323	16.3%
12 month total	731,868	639,113	92,755	14.5%

International - Arriving Passengers				
	Current Yr	Previous Yr	Change	
	2017/18	2016/17	incr pax	incr %
April	20,848	17,295	3,553	20.5%
May	10,842	9,947	895	9.0%
June	19,996	19,370	626	3.2%
July	36,004	33,107	2,897	8.8%
August	33,648	30,519	3,129	10.3%
September	26,678	23,848	2,830	11.9%
October	19,494	17,930	1,564	8.7%
November	22,527	20,042	2,485	12.4%
December	27,372	25,535	1,837	7.2%
January	27,347	24,380	2,967	12.2%
February	22,028	19,333	2,695	13.9%
March	24,592	19,879	4,713	23.7%
12 month total	291,376	261,185	30,191	11.6%

Total - Arriving Passengers				
	Current Yr	Previous Yr	Change	
	2017/18	2016/17	incr pax	incr %
April	81,615	68,089	13,526	19.9%
May	56,714	48,149	8,565	17.8%
June	64,652	56,776	7,876	13.9%
July	97,831	85,953	11,878	13.8%
August	92,886	82,473	10,413	12.6%
September	80,854	73,260	7,594	10.4%
October	77,267	66,682	10,585	15.9%
November	85,828	77,473	8,355	10.8%
December	102,811	92,045	10,766	11.7%
January	96,308	87,527	8,781	10.0%
February	88,274	78,703	9,571	12.2%
March	98,204	83,168	15,036	18.1%
12 month total	1,023,244	900,298	122,946	13.7%