

## Accommodation Survey: April 2017

Embargoed until 10:45am – 12 June 2017

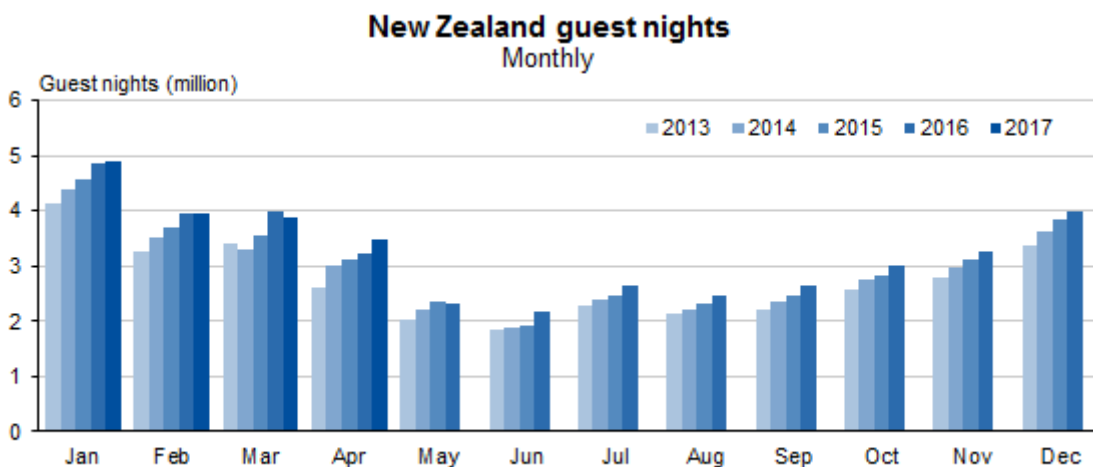
### Key facts

For April 2017, compared with April 2016:

- National guest nights were up 6.9 percent.
- Domestic guest nights were up 5.5 percent, and international guest nights were up 8.7 percent.
- Guest nights were up 7.0 percent in the North Island, and 6.7 percent in the South Island.
- All 12 regional areas had more guest nights.
- All accommodation types had more guest nights.

In 2016, Easter occurred in March. In 2017, it was in April.

For the year ended April 2017, national guest nights were up 3.5 percent from the April 2016 year.



Source: Stats NZ

The trend for national guest nights showed little movement in April 2017. Seasonally adjusted guest nights rose 1.7 percent. Seasonal adjustment does not account for the movement of Easter.

Liz Macpherson, Government Statistician  
ISSN 1178-0207  
12 June 2017

## Commentary

- [April Easter boosts guest nights](#)
- [Guest nights up in all regions](#)
- [Domestic and international guest nights up](#)
- [Guest nights up for all accommodation types](#)
- [Find data tables](#)

All guest night movements are unadjusted unless otherwise stated.

[Trend](#) and [seasonally adjusted](#) movements may be amended when we include future months.

### April Easter boosts guest nights

National guest nights spent in short-term commercial accommodation were up 6.9 percent in April 2017 compared with April 2016. Guest nights increased for the North Island, South Island, domestic and international guests and all four accommodation types.

In 2016, Easter occurred in March; in 2017 it was in April.

For the year ended April 2017, national guest nights were up 3.5 percent from the April 2016 year.

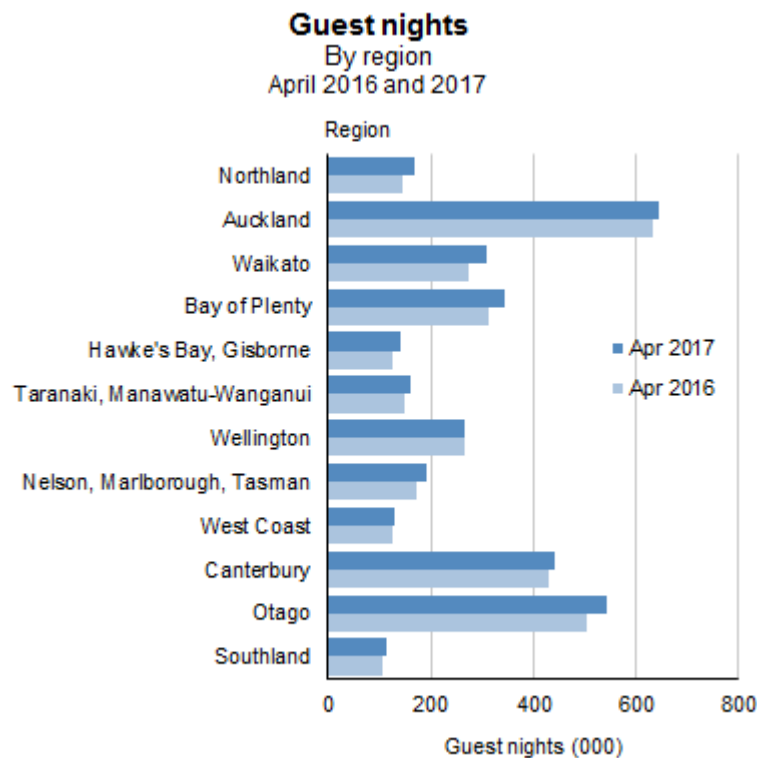
Seasonally adjusted guest nights rose 1.7 percent in April 2017 compared with March 2017. Seasonal adjustment does not account for the movement of Easter. The trend for national guest nights showed little movement.

### Guest nights up in all regions

Guest nights were up in all 12 regional areas in April 2017 compared with April 2016.

Otago had the greatest increase in guest nights – up 42,000 (8.3 percent); followed by Waikato – up 35,000 (13 percent); and Bay of Plenty – up 33,000 (11 percent)

Wellington had the smallest increase – up 500 (0.2 percent).



Source: Stats NZ

The trend for the North Island appears to be relatively flat. The trend for the South Island is rising.

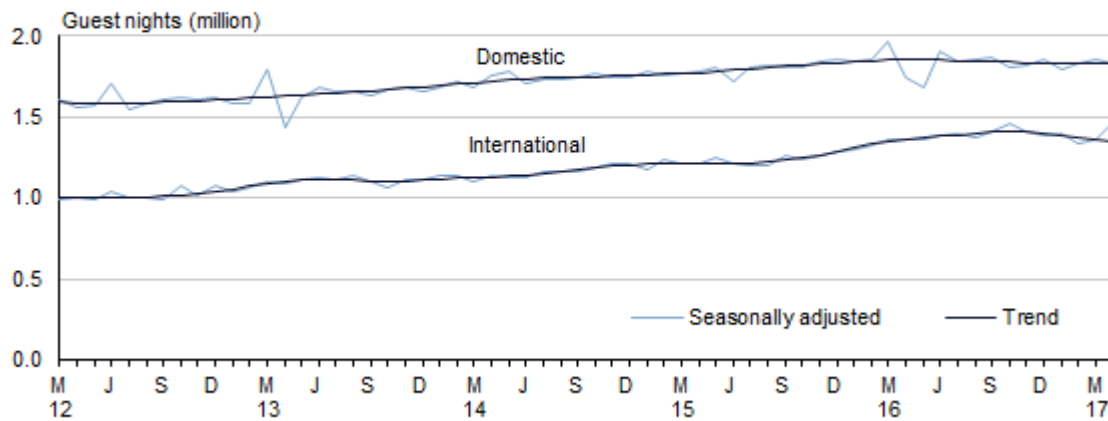
## Domestic and international guest nights up

Domestic guest nights were up 100,000 (5.5 percent) in April 2017 compared with April 2016. The increase followed falls in five of the previous six months. International guest nights were up 123,000 (8.7 percent) following a flat March.

Short-term visitor arrivals to New Zealand were up 21 percent in April, with the biggest change in arrivals being from Australia – up 26 percent.

[International Travel and Migration: April 2017](#) has more information.

**Guest nights by origin**  
Seasonally adjusted and trend  
Monthly



Source: Stats NZ

The trend for international guest nights fell for the sixth consecutive month.

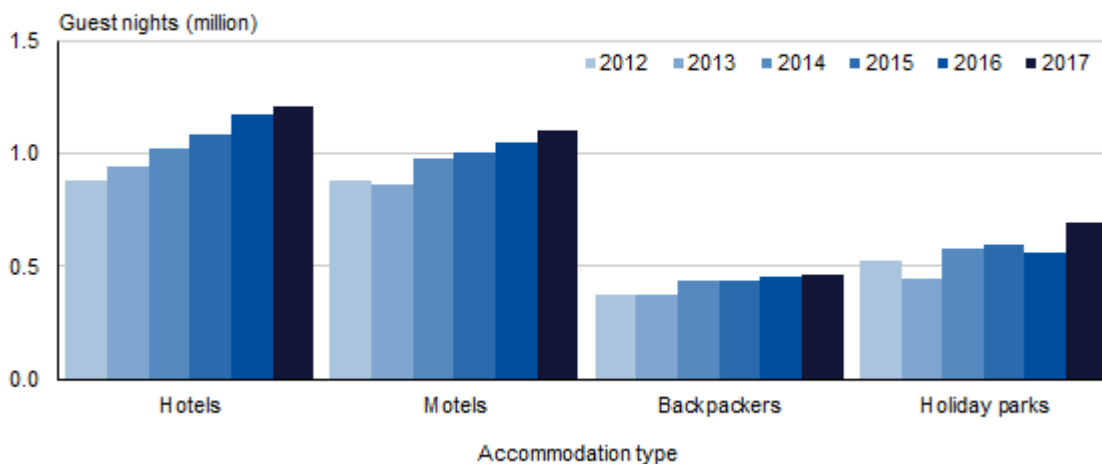
**Guest nights up for all accommodation types**

Comparisons are with April 2016.

Guest nights were up for all four accommodation types in April 2017:

- hotels up 3.0 percent
- motels up 4.6 percent
- backpackers up 1.4 percent
- holiday parks up 24 percent.

**Guest nights**  
By accommodation type  
April month, 2012–17



Source: StatsNZ

Domestic guest nights were up for two of the four accommodation types in April 2017:

- hotels down 0.5 percent

- motels down 2.5 percent
- backpackers up 17 percent
- holiday parks up 29 percent.

International guest nights were up for three of the four accommodation types in April 2017:

- hotels up 7.0 percent
- motels up 21 percent
- backpackers down 3.5 percent
- holiday parks up 15 percent.

Latest guest night trends appear to be relatively flat for hotels, motels, and holiday parks. Backpackers have a rising trend.

## **Find data tables**

For more detailed data from the Accommodation Survey, see the Excel tables in the 'Downloads' box.

## Related links

- [Next release](#)
- [Past releases](#)
- [Accommodation Survey pivot tables](#)
- [Commercial accommodation monitors](#)
- [Data quality](#)
- [Related information](#)

## Next release

*Accommodation Survey: May 2017* will be released on 12 July 2017.

[Subscribe to information releases](#), including this one, by completing the online subscription form.

The [release calendar](#) lists all information releases by date of release.

## Past releases

[Accommodation Survey](#) has links to past releases.

## Accommodation Survey pivot tables

[Accommodation Survey pivot tables](#) provide detailed information by area, accommodation type, and variable.

## Commercial accommodation monitors

[Commercial accommodation monitors](#) are published on the MBIE website and provide detailed information for each regional tourism organisation area.

## Data quality

[Data collections – DataInfo+](#) has the latest survey response rates.

[Accommodation concepts – DataInfo+](#) has definitions of terms used in this release.

[Accommodation Survey – DataInfo+](#) has general information on the survey.

## Related information

[International Travel and Migration](#) statistics record arrivals to, and departures from, New Zealand by overseas visitors, New Zealand resident travellers, and permanent and long-term migrants (immigrants and emigrants).

[Copyright and terms of use](#)

Includes our copyright, attribution, and liability statements.

## Contacts

**For media enquiries contact:**

Melissa Mckenzie

Christchurch 03 964 8439

**Email:** [info@stats.govt.nz](mailto:info@stats.govt.nz)

**For technical information contact:**

Zara Darbyshire (03 964 8715) or Mark Darbyshire (03 964 8302)

**Email:** [info@stats.govt.nz](mailto:info@stats.govt.nz)

**For general enquiries contact our Information Centre:**

Phone: 0508 525 525 (toll-free in New Zealand)

+64 4 931 4600 (outside New Zealand)

**Email:** [info@stats.govt.nz](mailto:info@stats.govt.nz)

**Subscription service:**

Subscribe to information releases, including this one, by completing the online subscription form.

**Correction notifications:**

Subscribe to receive an email if a correction notice is published for Accommodation Survey.

Unsubscribe to correction notifications for Accommodation Survey.

Subscribe to all to receive an email if a correction notice is published for any of our information releases.

Unsubscribe to all if you change your mind.

## Tables

See the following Excel tables in the 'Downloads' box on this page. If you have problems viewing the files, see [opening files and PDFs](#).

1. Guest night totals
2. Domestic and international guest nights
3. Regional guest nights
4. Changes in guest nights: seasonally adjusted and trend
5. Capacity and occupancy rates, by accommodation type

## Accommodation Survey pivot tables

The Accommodation Survey pivot tables provide detailed information by area, accommodation type, and variable.

1. RTO and accommodation type – accommodation data by RTO (Regional Tourism Organisation) area and accommodation type
2. RTO and origin – domestic and international guest nights by RTO area
3. Territorial authority area – accommodation data by territorial authority area.

## Commercial accommodation monitors

[Commercial accommodation monitors](#) on the Ministry of Business, Innovation and Employment website provide detailed information for each regional tourism organisation area.

## Access more data on Infoshare

Infoshare allows you to organise data in the way that best meets your needs. You can view the resulting tables onscreen or download them.

### **Use Infoshare**

For this release, select the following categories from the Infoshare homepage:

Subject category: **Tourism**

Group: **Accommodation Survey - ACS**

## Next release

*Accommodation Survey: May 2017* will be released on 12 July 2017.