

Agricultural Production Statistics: June 2016 (final)

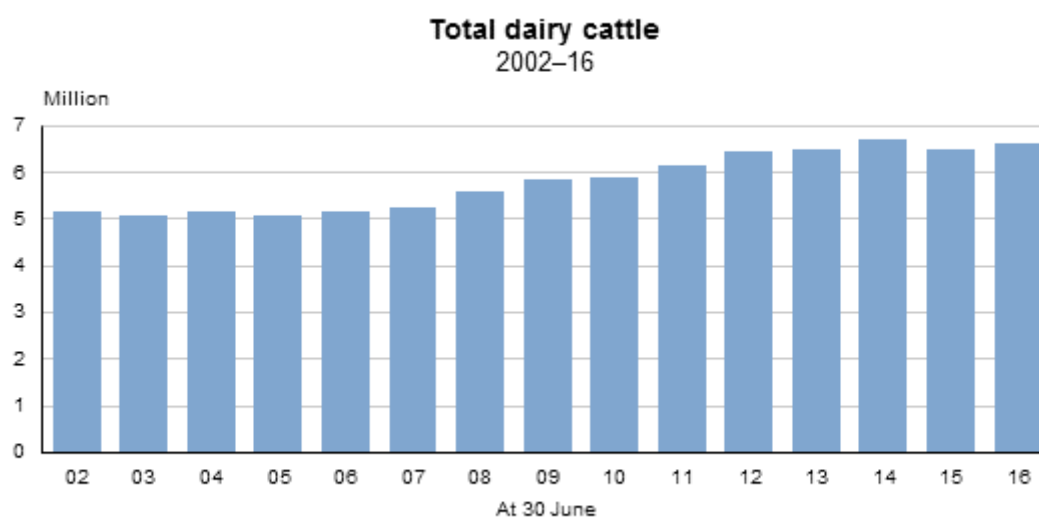
Embargoed until 10:45am – 10 May 2017

Key facts

At 30 June 2016, the number of:

- dairy cattle was 6.6 million, down 133,000 from 30 June 2015
- sheep was 27.6 million, 5 percent fewer than in 2015
- beef cattle was 3.5 million, relatively unchanged from 2015
- deer decreased 7 percent, to 835,000.

During the year ended 31st March 2016, the area of exotic forest harvested was 47,000 hectares.



Source: Stats NZ

Liz MacPherson, Government Statistician

ISSN 1178-0398

10 May 2017

Commentary

- Dairy number increases 2 percent nationally
- Sheep number continues to decline
- No change in number of beef cattle
- Deer number falls below 900,000
- Good harvest for wheat
- New area planted in exotic forest increases
- Export statistics relevant to livestock categories

This release contains final results for key livestock, forestry, and arable and horticultural crops from the 2016 Agricultural Production Survey. Statistics in this release may differ from the provisional statistics published in January 2017. Since the provisional release, we have received more survey responses and done more data processing and analysis.

Figures in this release are rounded. All percentage changes are calculated using unrounded figures.

Dairy number increases 2 percent nationally

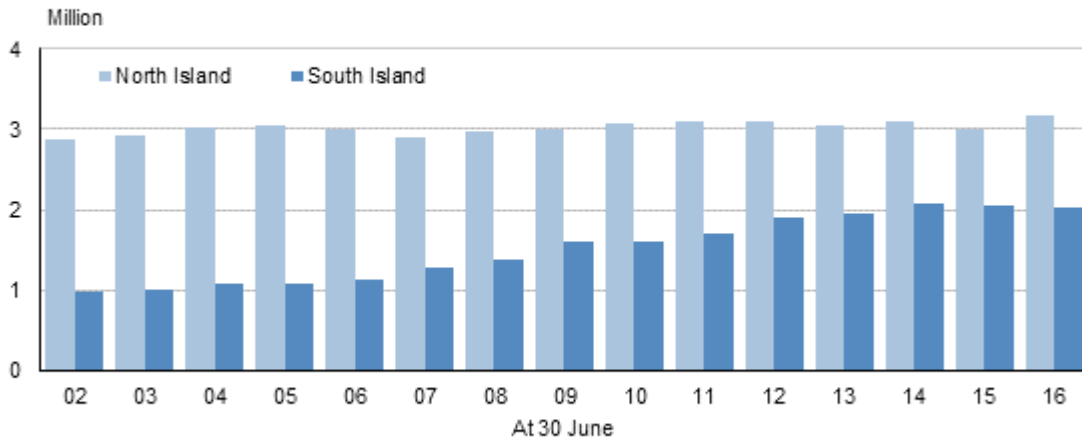
At 30 June 2016, the number of dairy cattle had increased 2 percent from 30 June 2015, to 6.6 million, up 133,000. The number in the North Island increased 6 percent (238,000), while the number in the South Island decreased 4 percent (104,000).

Waikato, Otago, and Manawatu-Wanganui were the regions with the largest shifts in dairy cattle numbers between 2015 and 2016. Total dairy cattle in Manawatu-Wanganui increased by 73,000 (16 percent) and in Waikato by 93,000 (5 percent). The number in Otago fell by 73,000 (19 percent).

The national milking herd increased 2.9 percent, while the replacement herd decreased 2.5 percent during this period.

The increase in total dairy cattle came at a time of subdued international milk prices and a lower milk solid payouts.

Dairy cows and heifers in milk or in calf, by island 2002–16



Source: Stats NZ

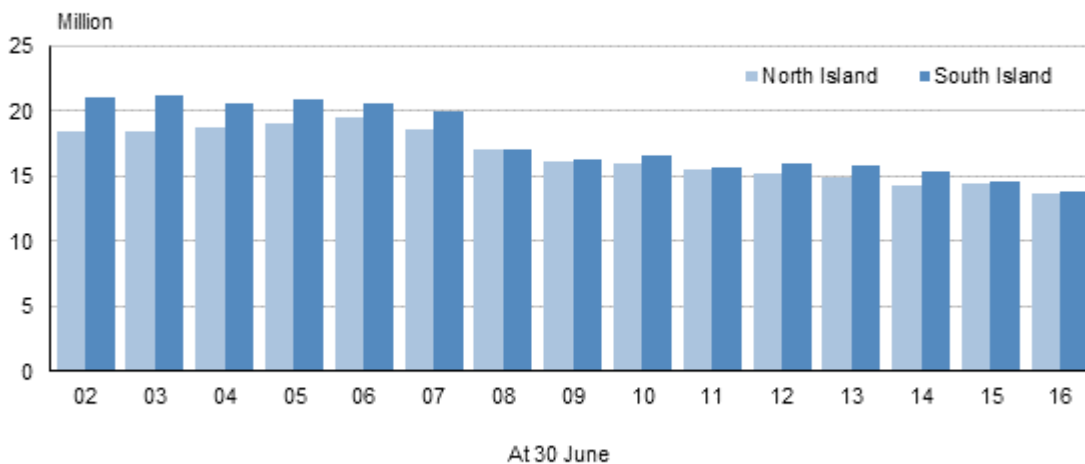
Sheep number continues to decline

In 2016 there were 27.6 million sheep, a 5 percent decrease when compared with 2015. The number of sheep in the South Island declined by 719,000 (5 percent), and in the North Island the total number was down 818,000 (6 percent).

Dry conditions in the South Island and facial eczema in the North Island both contributed to the decreases.

Regions with the most-significant decreases were Manawatu-Wanganui, with 479,000 fewer sheep (down 9 percent) and Southland, with 361,000 (9 percent) fewer than in 2015.

Sheep in the North and South islands 2002–16



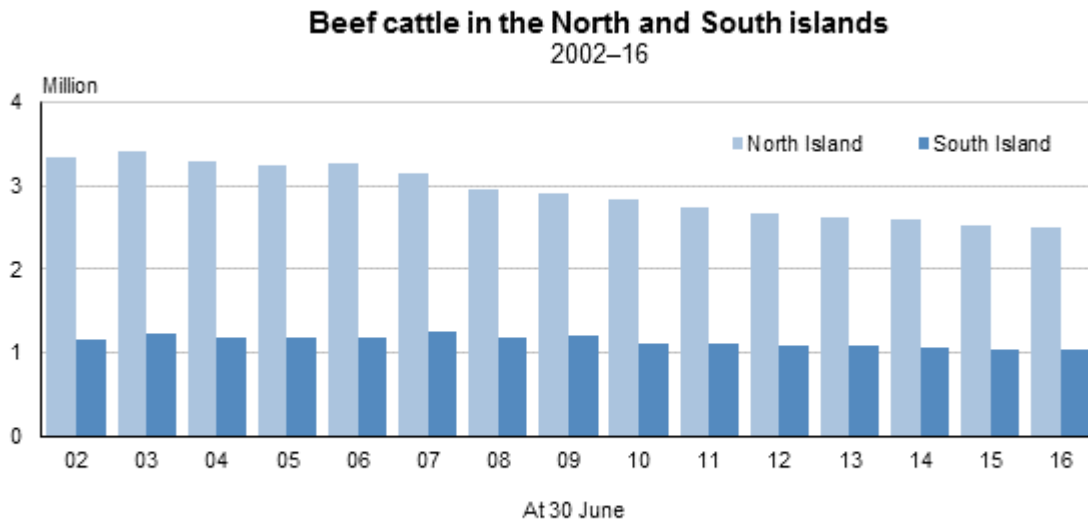
Source: Stats NZ

No change in number of beef cattle

The total number of beef cattle was unchanged when compared with 2015. There were 3.5 million beef cattle at 30 June 2016.

Beef farming is mainly in the North Island, with 2.5 million beef cattle. The South Island had 1 million beef cattle.

Regions with the largest increases were Waikato and Canterbury, with increases of 35,000 (8 percent) and 25,000 (6 percent), respectively. Regions with the largest decreases were Taranaki and Manawatu-Wanganui, down 22,000 (17 percent) and 24,000 (4 percent), respectively.



Source: Stats NZ

Deer number falls below 900,000

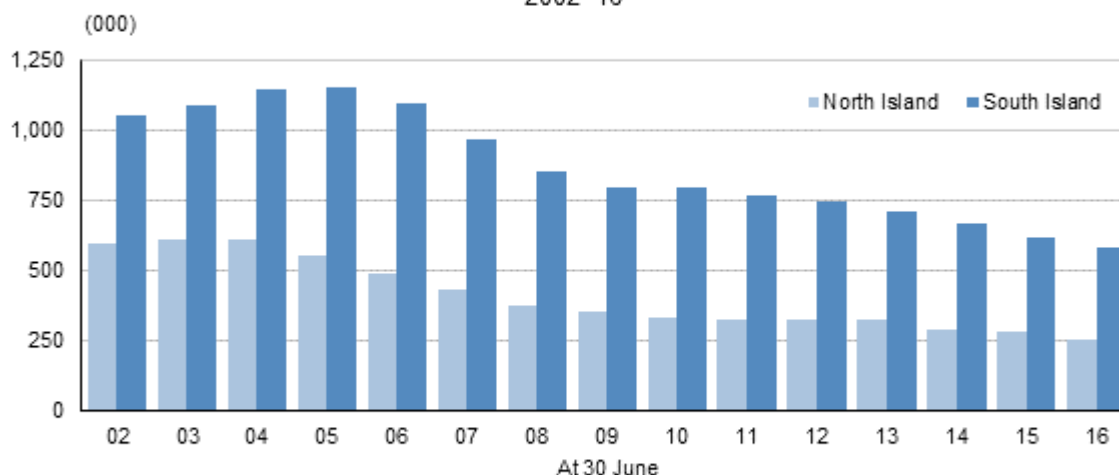
The number of deer in New Zealand continued to decrease, to be 835,000 at 30 June 2016. The number has been falling since 2004, when it peaked at 1.8 million.

In the South Island, the decrease was 6 percent (34,000), while in the North Island the deer number was down 11 percent (32,000).

Manawatu-Wanganui and Otago regions had the largest decreases in deer, with falls of 15,000 (24 percent) and 14,000 (11 percent), respectively.

The number of mated female deer continued to drop, as it has since 2013.

Deer in the North and South islands 2002–16



Source: Stats NZ

Good harvest for wheat

Wheat

For the year ending 30 June 2016, 49,900 hectares of wheat was harvested, up 5 percent from 2015. A total of 459,400 tonnes was harvested, which equated to a yield per hectare of 9.2 tonnes. This was more than the 8.7 tonnes per hectare in 2015. The dry summer was conducive to the good wheat harvest achieved. Canterbury accounted for 81 percent of the total area harvested.

Barley

The 51,900 hectares of barley harvested during the year ended 30 June 2016 was down 19 percent (12,300 hectares) from 2015.

Barley is grown predominantly in Canterbury, which accounted for 67 percent of the total area harvested. Otago, Southland, and Manawatu-Wanganui are also barley-growing regions.

Maize

The area of maize grain harvested was 18,000 hectares for the year ending 30 June 2016, down 9 percent from 2015. The North Island had 95 percent of the maize area harvested. Waikato, Hawke's Bay, Manawatu-Wanganui, and Bay of Plenty are the main growing regions.

New area planted in exotic forest increases

During the year ending 31 March 2016, the new area of exotic forest planted increased 20 percent, to 3,700 hectares. During the same period, the area of exotic forest replanted was down

5 percent on 2015, to 37,800 hectares. The area replanted decreased 26 percent (2,800 hectares) in the South Island, while the North Island was up 2 percent (600 hectares).

There were 47,500 hectares of exotic timber harvested, a 1 percent decrease from 2015. Harvesting decreased in the South Island, down 24 percent to 9,800 hectares, while in the North Island it was up 7 percent to 37,700 hectares. There were 25.4 million cubic metres of exotic timber harvested in 2016, little changed from 2015.

Tables and maps available

For more detailed agricultural data, and a geospatial representation of the change between 2006 and 2016 for dairy cattle and sheep numbers, see the Excel tables and maps in the 'Downloads' box.

Export statistics relevant to livestock categories

Export statistics provide a useful context when interpreting livestock numbers. The following table combines exports into categories that can be easily compared with the livestock numbers in this release.

Export statistics for year ended December 2016		
Export group	NZ\$(million)	Percent of total exports
Dairy	12,810	26.4
Sheep	3,577	7.4
Beef	3,419	7.1
Deer	238	0.5
Live animals	85	0.2

Source: Stats NZ

[Overseas merchandise trade datasets](#) has more information about primary sector export statistics.

[Export categories for agriculture in DataInfo+](#) has a full description of the export group.

Related links

Next release

Agricultural Production Statistics: June 2017 (provisional) will be released on 14 December 2017.

[Subscribe to information releases](#), including this one, by completing our online form.

The [release calendar](#) lists all information releases by date of release.

Past releases

[Agricultural Production Statistics](#) has links to past releases.

Related information

See [agriculture](#), [horticulture](#), and [forestry](#) for more information.

The [Ministry for Primary Industries](#) has more information on forestry trade and production.

Data quality

Period-specific information

[Agricultural Production Statistics: June 2016 \(final\) – DataInfo+](#)
Methodology used for this release.

General information

[Agricultural Production Statistics – DataInfo+](#)
General methodology used to produce agricultural statistics and related metadata.

[Agricultural Production Statistics concepts – DataInfo+](#)
Find the definitions of concepts used in this release.

Revisions

Since the release of *Agricultural Production Statistics: June 2016 (provisional)* in January 2017, we have received more survey responses and done more data processing and analysis. Statistics in this final release differ from the provisional statistics published.

Changes between provisional and final results for agricultural estimates (national level)			
Year ended 30 June 2016			
	Provisional	Final	% change
Ewe hoggets put to ram	1,691,000	1,695,000	0
Ewes (2-tooth and over) put to ram	18,065,000	18,137,000	0
Total sheep	27,576,000	27,584,000	0
Lambs born to ewe hoggets	962,000	961,000	0
Lambs born to ewes	23,574,000	23,609,000	0
Total lambs marked or tailed	24,536,000	24,570,000	0
Dairy cows and heifers in milk or calf	5,123,000	5,202,000	1
Total dairy cattle	6,495,000	6,619,000	2
Calves born alive to dairy heifers / cows	3,911,000	4,398,000	12
Beef cows and heifers in calf 1–2 years	130,000	136,000	5
Beef cows and heifers in calf 2 years and over	799,000	817,000	2
Total beef cattle	3,473,000	3,533,000	2
Calves born alive to beef heifers / cows	828,000	840,000	1
Female deer mated	418,000	406,000	-3
Total deer	853,000	835,000	-2
Fawns born on the farm alive at four months	367,000	321,000	-13
New area planted in forestry (hectares)	4,000	4,000	2
Area replanted in forestry (hectares)	36,000	38,000	6
Exotic timber harvested (cubic metres)	23,504,000	25,381,000	8
Exotic timber harvested (hectares)	46,000	47,000	4

Contacts

For media enquiries contact:

Stuart Pitts
Auckland 09 920 9100
Email: info@stats.govt.nz

For technical information contact:

Shannon McLeigh or Ella Encarnacion
Auckland 09 920 9100
Email: info@stats.govt.nz

For general enquiries contact our Information Centre:

Phone: 0508 525 525 (toll free in New Zealand)
+64 4 931 4600 (outside New Zealand)
Email: info@stats.govt.nz

Subscription service:

Subscribe to information releases, including this one, by completing the online subscription form.

Correction notifications:

Subscribe to receive an email if a correction notice is published for Agricultural Production Statistics (final).

Unsubscribe to correction notifications for the name of release.

Subscribe to all to receive an email if a correction notice is published for any of our information releases.

Unsubscribe to all if you change your mind.

Tables

See the Excel tables in the 'Downloads' box on this page. If you have problems viewing the files, see [opening files and PDFs](#).

Agricultural production statistics

1. Selected livestock numbers, by region
2. Sheep numbers, by region
3. Lamb numbers, by region
4. Dairy cattle numbers, by region
5. Beef cattle numbers, by region
6. Deer numbers, by region
7. Pig numbers, by region
8. Forestry, by region
9. Grain crops, by region
10. Livestock by island
11. Breeding ewes and lambing percentages

Tables for Federation of Māori Authorities

1. Land use, stock units, and supplementary feed
2. Selected livestock numbers
3. Selected farm practices

Access more data on Infoshare and NZ.Stat

Infoshare and NZ.Stat allow you to organise data in the way that best meets your needs. You can view the resulting tables onscreen or download them.

Use Infoshare

For this release, select the following categories from the Infoshare homepage:

Subject category: **Industry sectors**

Group: **Agriculture**

Use NZ.Stat

For this release, select **Agriculture** from the themes on the NZ.Stat homepage.

Next release

Agricultural Production Statistics: June 2017 (provisional) will be released on 14 December 2017.