



ZQN news

Monthly Passenger Update

March 2015

available at www.queenstownairport.co.nz

Total passengers for month
130,726
 up 15.4%

Growth in passenger numbers continued on all domestic and international routes. March passenger numbers were boosted by the Motatapu adventure race and NZ Golf Open in Queenstown, and travel to Cricket World Cup events.

International passengers
33,019
 up 39.6%

International passenger numbers continued to grow strongly on all trans-Tasman routes, and particularly on the Melbourne route, in March. Capacity increased, with more flights on all routes. Load factors were 81%, up from 78% in March last year.

Total passengers last 12 months
1,366,037
 up 10.4%

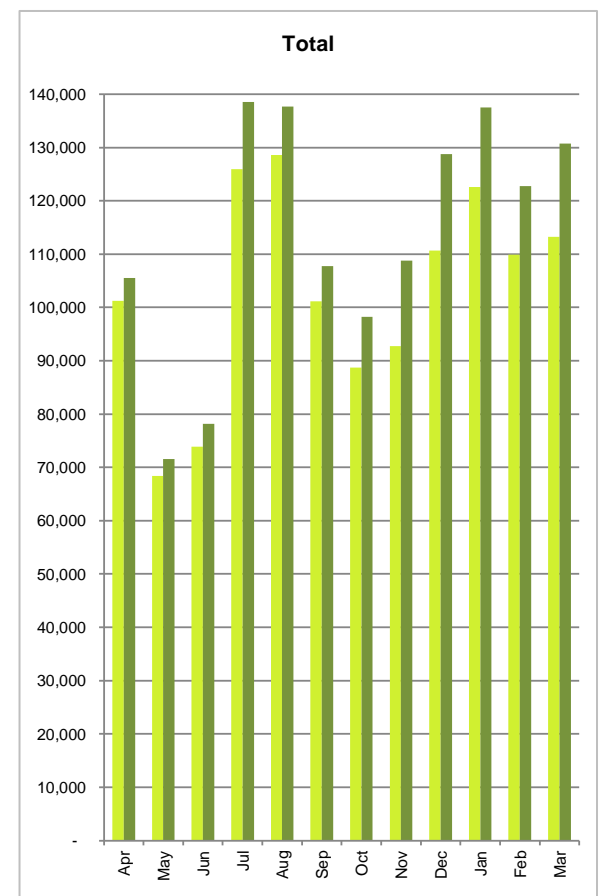
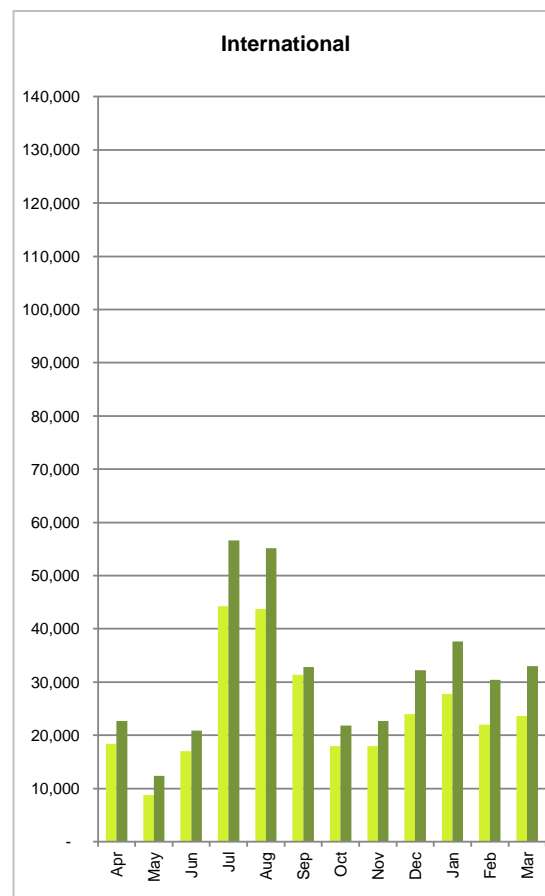
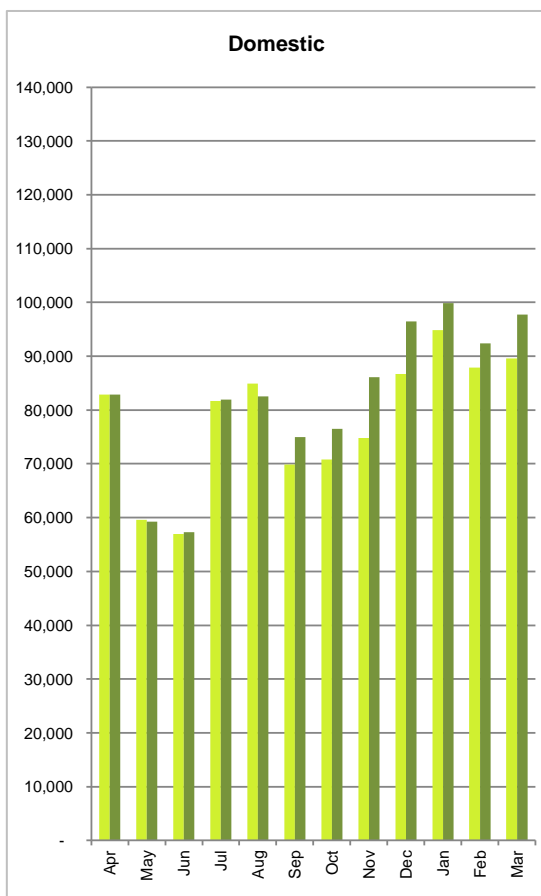
Total 12-month passenger numbers grew steadily, with capacity increases and strong passenger numbers on domestic and trans-Tasman routes.

Domestic passengers
97,707
 up 9.1%

Passenger numbers continued to grow on all domestic routes. Domestic capacity increased due to more flights and the use of larger aircraft on domestic routes. Load factors were up to 87%, up 1% over March last year.

Monthly Passengers - Arriving and Departing

— monthly passengers this year
 — monthly passengers previous year



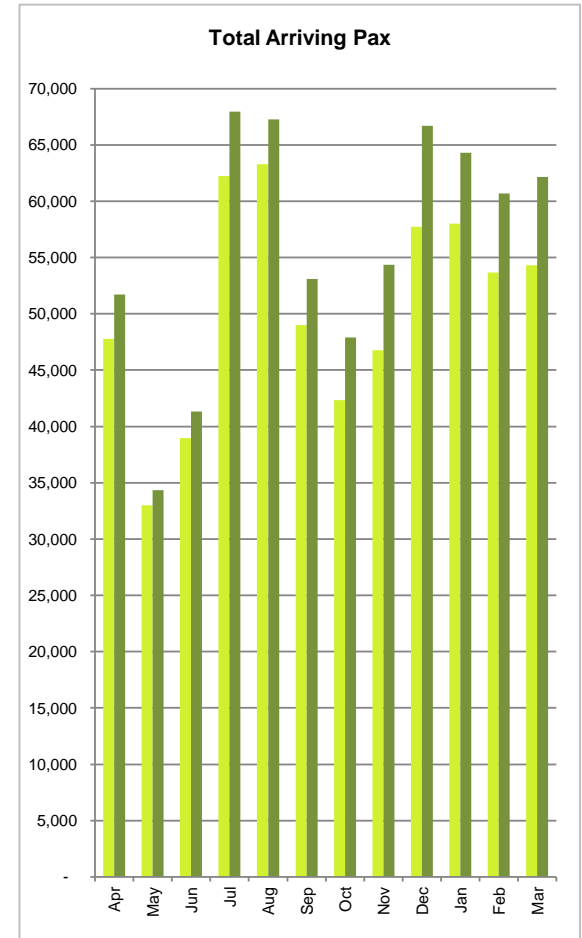
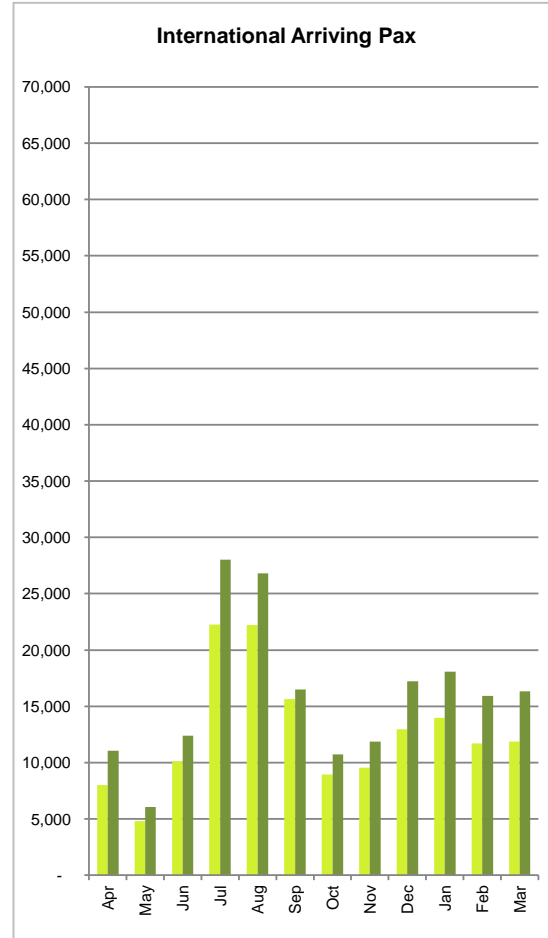
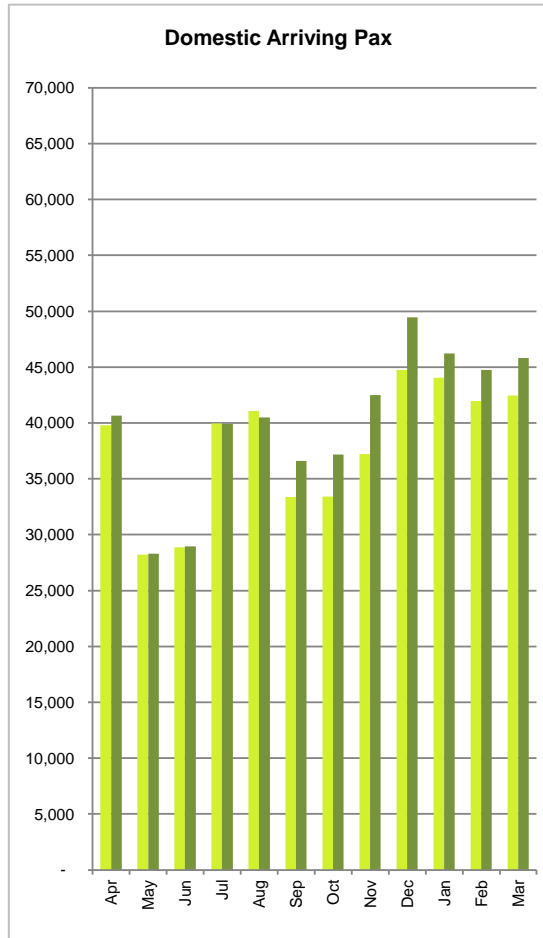
	Domestic Passengers			
	current yr	previous yr	Change	
	2014/15	2013/14	incr pax	incr %
Mar	97,707	89,590	8,117	9.1%
Feb	92,357	87,885	4,472	5.1%
Jan	99,869	94,833	5,036	5.3%
Dec	96,498	86,672	9,826	11.3%
Nov	86,115	74,798	11,317	15.1%
Oct	76,460	70,834	5,626	7.9%
Sep	74,963	69,870	5,093	7.3%
Aug	82,565	84,896	-2,331	-2.7%
Jul	81,905	81,680	225	0.3%
Jun	57,337	56,934	403	0.7%
May	59,249	59,611	-362	-0.6%
Apr	82,832	82,854	-22	0.0%
12 month total	987,857	940,457	47,400	5.0%

	International Passengers			
	current yr	previous yr	Change	
	2014/15	2013/14	incr pax	incr %
Mar	33,019	23,651	9,368	39.6%
Feb	30,382	21,980	8,402	38.2%
Jan	37,641	27,729	9,912	35.7%
Dec	32,237	23,981	8,256	34.4%
Nov	22,662	17,962	4,700	26.2%
Oct	21,807	17,925	3,882	21.7%
Sep	32,830	31,319	1,511	4.8%
Aug	55,125	43,731	11,394	26.1%
Jul	56,625	44,272	12,353	27.9%
Jun	20,835	16,975	3,860	22.7%
May	12,358	8,755	3,603	41.2%
Apr	22,659	18,370	4,289	23.3%
12 month total	378,180	296,650	81,530	27.5%

	Total Passengers			
	current yr	previous yr	Change	
	2014/15	2013/14	incr pax	incr %
Mar	130,726	113,241	17,485	15.4%
Feb	122,739	109,865	12,874	11.7%
Jan	137,510	122,562	14,948	12.2%
Dec	128,735	110,653	18,082	16.3%
Nov	108,777	92,760	16,017	17.3%
Oct	98,267	88,759	9,508	10.7%
Sep	107,793	101,189	6,604	6.5%
Aug	137,690	128,627	9,063	7.0%
Jul	138,530	125,952	12,578	10.0%
Jun	78,172	73,909	4,263	5.8%
May	71,607	68,366	3,241	4.7%
Apr	105,491	101,224	4,267	4.2%
12 month total	1,366,037	1,237,107	128,930	10.4%

Monthly Passenger Arrivals

■ monthly passengers arriving this year
■ monthly passengers arriving previous year



Domestic - Arriving Passengers				
	current yr	previous yr	Change	
	2014/15	2013/14	incr pax	incr %
Mar	45,821	42,454	3,367	7.9%
Feb	44,756	41,973	2,783	6.6%
Jan	46,235	44,044	2,191	5.0%
Dec	49,459	44,745	4,714	10.5%
Nov	42,481	37,223	5,258	14.1%
Oct	37,178	33,394	3,784	11.3%
Sep	36,586	33,364	3,222	9.7%
Aug	40,484	41,072	-588	-1.4%
Jul	39,934	39,961	-27	-0.1%
Jun	28,931	28,851	80	0.3%
May	28,280	28,210	70	0.2%
Apr	40,663	39,784	879	2.2%
12 month total	480,808	455,075	25,733	5.7%

International - Arriving Passengers				
	current yr	previous yr	Change	
	2014/15	2013/14	incr pax	incr %
Mar	16,333	11,864	4,469	37.7%
Feb	15,917	11,698	4,219	36.1%
Jan	18,081	13,973	4,108	29.4%
Dec	17,225	12,974	4,251	32.8%
Nov	11,886	9,559	2,327	24.3%
Oct	10,722	8,943	1,779	19.9%
Sep	16,513	15,650	863	5.5%
Aug	26,794	22,208	4,586	20.7%
Jul	28,039	22,277	5,762	25.9%
Jun	12,381	10,117	2,264	22.4%
May	6,049	4,808	1,241	25.8%
Apr	11,042	8,001	3,041	38.0%
12 month total	190,982	152,072	38,910	25.6%

Total - Arriving Passengers				
	current yr	previous yr	Change	
	2014/15	2013/14	incr pax	incr %
Mar	45,821	42,454	3,367	7.9%
Feb	44,756	41,973	2,783	6.6%
Jan	46,235	44,044	2,191	5.0%
Dec	49,459	44,745	4,714	10.5%
Nov	42,481	37,223	5,258	14.1%
Oct	37,178	33,394	3,784	11.3%
Sep	36,586	33,364	3,222	9.7%
Aug	40,484	41,072	-588	-1.4%
Jul	39,934	39,961	-27	-0.1%
Jun	28,931	28,851	80	0.3%
May	28,280	28,210	70	0.2%
Apr	40,663	39,784	879	2.2%
12 month total	671,790	607,147	64,643	10.6%