



Published by Newmont Waihi Gold Ltd to keep you up to date with what's happening in and around the projects.

# Waihi Gold Update

July 26, 2012

## Emergency emergency...

### Monday 16 July 7.00pm:

'A' crew and Boart Longyear drill crew go on night shift. Normal shift is 11.5 hours.

### Tuesday 17 July 5.23am:

Truck fire reported at 1050RL, about 500 metres from portal and 70 metres below surface. Emergency declared. Truck driver backs truck into cuddy and returns to surface with another driver. 28 staff left on tagboard, all head for refuge chambers. Mines Rescue alerted. Team assembles and conducts assessment as per Emergency Response Plan. Mine fans remain fully operational and ventilation of the mine is maintained. This results in smoke from the truck fire being drawn into the mine and then pushed out through the vent shaft on Union Hill but means that many areas of the mine are free of smoke.

8.00am: Six members of Mines Rescue enter portal wearing BG4 self-contained breathing apparatus. They conduct gas and visual tests as they move off the main decline and travel down into Favona to the refuge chamber at Stockpile 10.



Newmont Waihi Gold Mines Rescue team members don their BG4 breathing apparatus.



A Komatsu truck similar to that which caught fire.

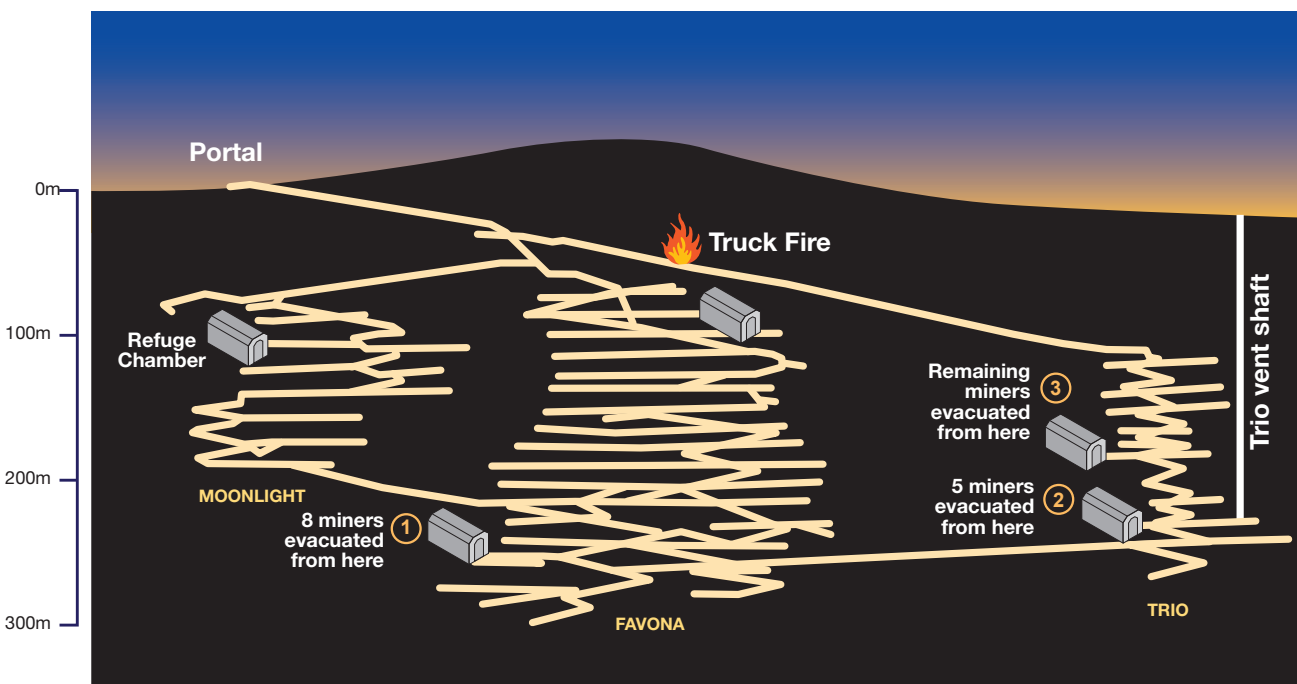


A six person portable refuge chamber.

8.35am: Eight staff from refuge chamber at Stockpile 10 arrive back at surface. Mine Rescue team continues to 834 level in Trio. They establish fresh air bases along the way. (A fresh air base is an identified place where fresh air is available during a particular incident, it could be at the intersection of two drives or next to a vent bag that is drawing fresh air. The location may change depending on the nature and location of any incident). A New Zealand Mines Rescue team from Solid Energy in Huntly is called to assist as back up.



New Zealand Mines Rescue team members practicing in Waihi.



9.08am: Five staff from refuge chamber at 834 level return to surface. Mines Rescue team returns to surface and replaces oxygen cylinders. A reconfigured Mines Rescue crew returns underground. They again travel to the bottom of Favona and across to the bottom of Trio then begin to make their way up towards the remaining men in a refuge chamber at 908. The team tests for gas and conducts visual checks as they go. Team arrives at 908. Miners in refuge chamber don self-rescuers as a precaution, get into mine vehicles and travel to surface.

### Monday 23 July:

Detailed investigation into event and response continues. What went well? What can we do better in the event of another incident? What are the learnings for us all about procedures and responses?



'A' crew attend a BBQ on site last Friday before returning to work

### Thursday 19 July:

Mine staff and Fire Brigade staff approach truck with thermal imaging camera.

Truck cooled down with water. Decline and immediate areas checked for geotechnical stability. Infrastructure such as pipes that carry water, electricity and compressed air checked for integrity. Mine declared available for operation.



Thermal imaging camera being demonstrated on the surface.

### Friday 20 July:

'A' crew have BBQ on site to catch up with mates they haven't seen since Tuesday's incident. Normal shifts resume 7.00pm.

11.50am: Remaining men from refuge chamber at 908 return to surface. Truck fire continues to burn. Mine is closed to all personnel. Two stage evacuation completed.

### Wednesday 18 July:

Truck fire burns itself out. Members of High Hazard Unit from Ministry of Business, Innovation and Employment re-enter mine with Newmont Waihi Gold staff to conduct preliminary assessment.

