

# Overseas Merchandise Trade: March 2011

Embargoed until 10:45am – 29 April 2011

## Highlights

### March 2011 quarter:

Values are seasonally adjusted and compared with the December 2010 quarter unless otherwise stated.

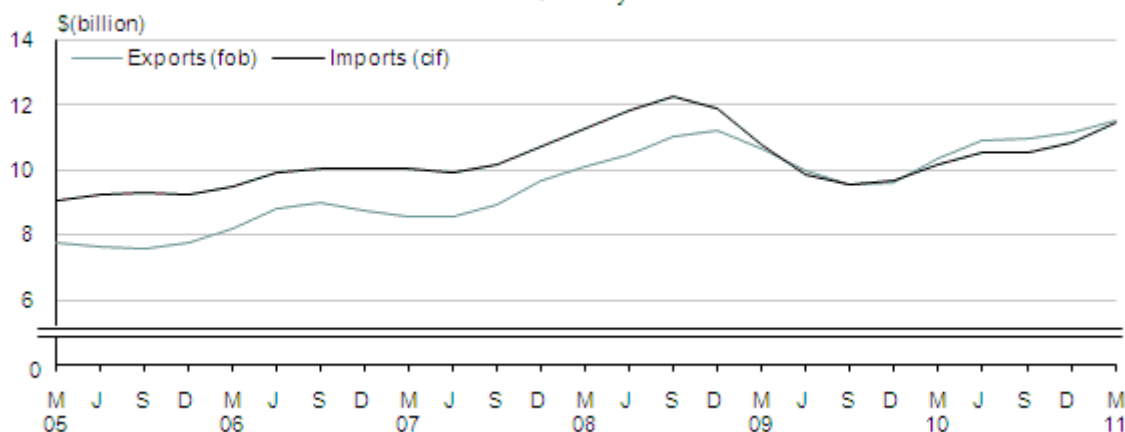
- Exports increased 3.2 percent to \$11.6 billion.
- Milk powder, butter, and cheese recorded the largest increase in export values.
- The trend for exports has reached a new high.
- Imports increased 8.9 percent to \$12.0 billion.
- The trend for imports is still below its peak of September 2008.
- There was a trade deficit of \$428 million (3.7 percent of exports).

### March 2011 month:

Values are actual and compared with the March 2010 month unless otherwise stated.

- Exports were up \$454 million (11 percent) to \$4.5 billion.
- Milk powder, butter, and cheese exports recorded the largest increase.
- Imports were up \$598 million (17 percent) to \$4.1 billion.
- Aircraft and parts imports recorded the largest increase.
- There was a trade surplus of \$464 million (10 percent of exports).

**Merchandise trend values**  
Quarterly



Source: Statistics New Zealand

Geoff Bascand  
Government Statistician

29 April 2011  
ISSN 1178-0320

## Commentary

### Seasonally adjusted exports – March 2011 quarter

The seasonally adjusted value of merchandise exports increased 3.2 percent (\$354 million) to \$11.6 billion in the March 2011 quarter. This follows a 3.4 percent increase in the December 2010 quarter. Most of the increase in the March 2011 quarter took place in the January month, according to the new monthly seasonally adjusted series.

The trend for goods exported, which reflects the long-term behaviour in export values, has increased 21 percent since the September 2009 quarter. The trend in exports has reached a new high, surpassing the previous peak in the December 2008 quarter.

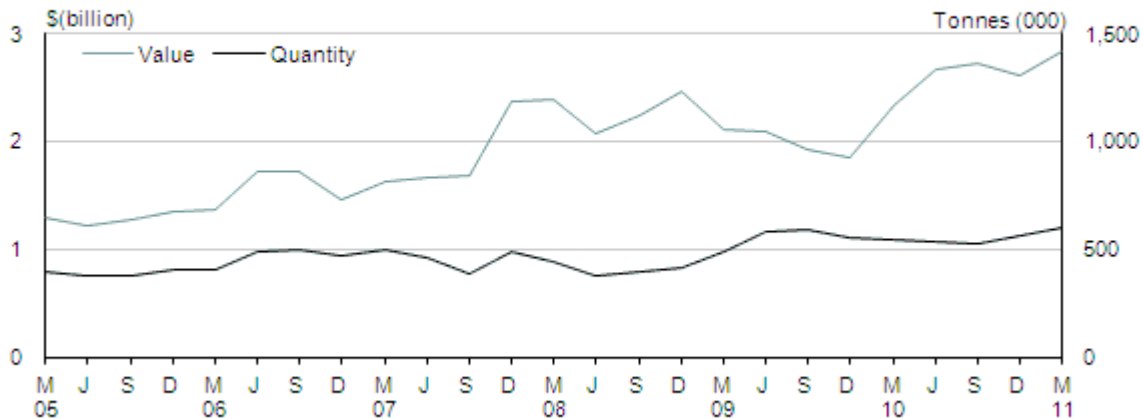


Key increases and decreases in seasonally adjusted export values in the March 2011 quarter were as follows:

- Milk powder, butter, and cheese recorded the largest increase, up 8.4 percent (\$218 million). Quantities were up by 6.6 percent.
- Crude oil, which is not seasonally adjusted, recorded the second-largest increase, up 32 percent (\$133 million). Quantities were up 12 percent.
- Logs, wood, and wood articles recorded the next-largest increase, up 11 percent (\$84 million), following a similar increase in the previous quarter. Quantities were up 13 percent.
- Meat and edible offal products were up 0.9 percent (\$11 million) following a 26 percent increase in the previous quarter. Quantities were down 7.4 percent.
- Fruit, down 7.9 percent (\$29 million), and wine, down 8.5 percent (\$24 million), recorded the largest decreases.

### Milk powder, butter, and cheese exports

Quarterly values and quantities  
Seasonally adjusted



Source: Statistics New Zealand

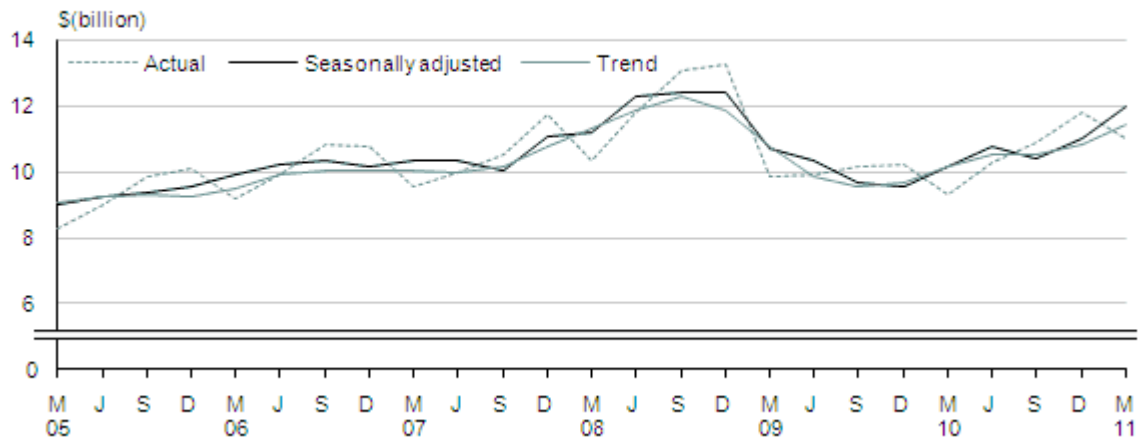
### Seasonally adjusted imports – March 2011 quarter

The seasonally adjusted value of merchandise imports increased 8.9 percent (\$974 million) to \$12.0 billion in the March 2011 quarter following a 5.8 percent increase in the December 2010 quarter. The December 2010 and March 2011 quarters both included the one-off importation of aircraft. If these one-off imports were excluded from both quarters, seasonally adjusted imports in the March 2011 quarter, would have increased by 7.1 percent.

The trend for import values has increased for the last two quarters. The level of the trend is 6.7 percent below its peak in September 2008 quarter.

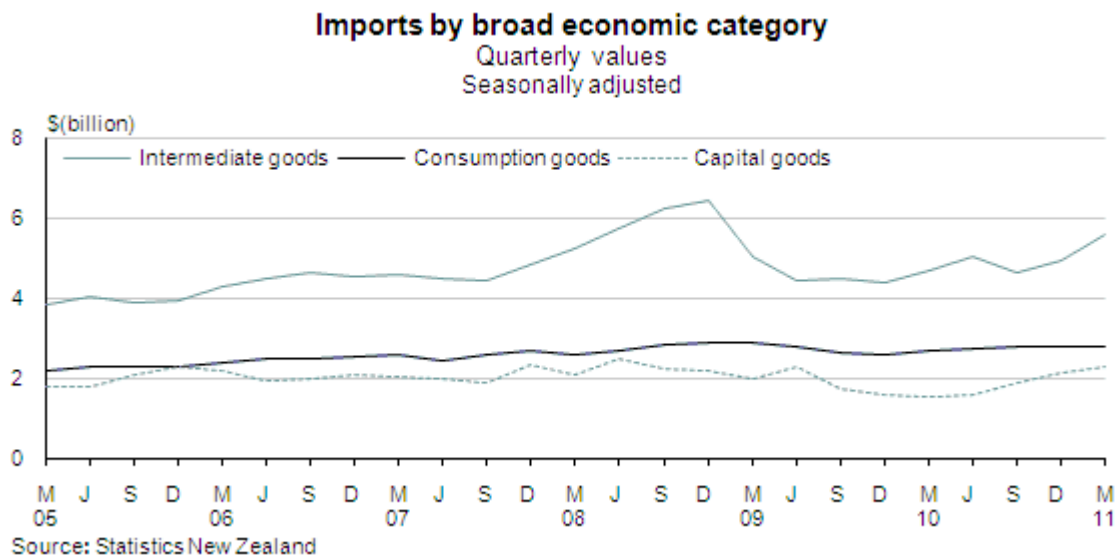
### Merchandise imports

Quarterly



Source: Statistics New Zealand

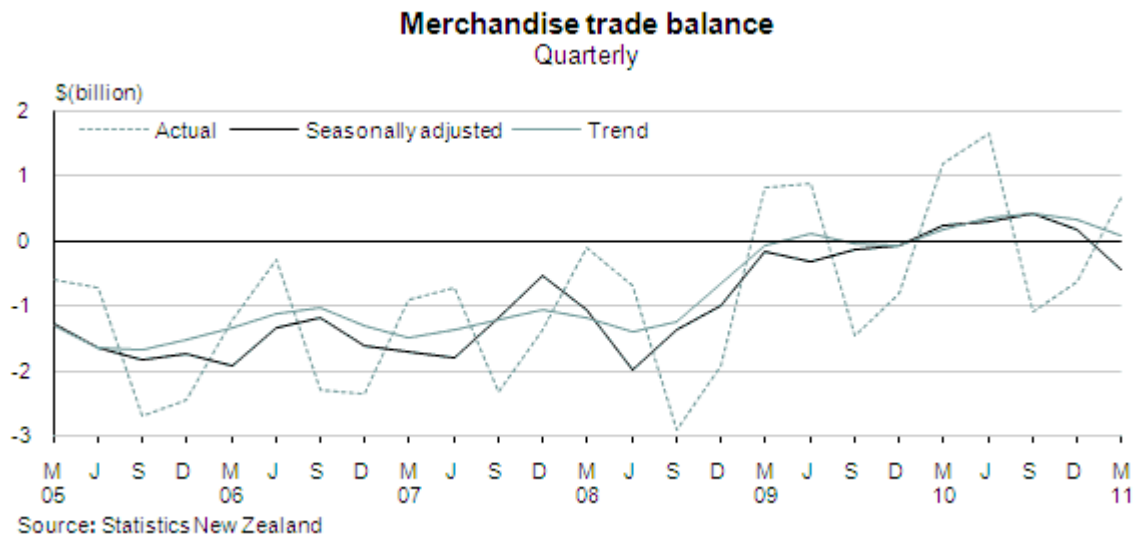
The value of imports in most broad economic categories increased in the March 2011 quarter compared with the December 2010 quarter. Intermediate goods led this increase.



- Intermediate goods increased by 13 percent (\$651 million), led by crude oil and processed industrial supplies, up 31 percent (\$306 million) and 6.8 percent (\$154 million), respectively. Crude oil is imported in large, irregular shipments which can cause large percentage fluctuations in the series.
- Capital goods increased 6.3 percent (\$136 million), led by an increase in transport equipment. Transport equipment is not seasonally adjusted and includes the one-off importation of aircraft during February and March 2011.
- Consumption goods have been flat since the September 2010 quarter, increasing 0.1 percent in the March 2011 quarter. This follows a 0.3 percent increase in the December 2010 quarter.
- Petrol and avgas increased 12 percent (\$40 million), following a 43 percent increase in the December 2010 quarter. Irregular shipments of these commodities can cause large fluctuations. This series is also not seasonally adjusted because it does not have a regular seasonal pattern.
- Passenger motor cars decreased by 3.6 percent (\$25 million). This is the third consecutive quarterly decrease.

## Seasonally adjusted trade balance – March 2011 quarter

There was a seasonally adjusted trade deficit (the value of imports exceeded that of exports) of \$428 million in the March 2011 quarter, equivalent to 3.7 percent of exports. This is the first quarterly, seasonally adjusted deficit since the December 2009 quarter. Excluding the one-off importation of aircraft during the February and March months, the March 2011 quarter would have had a small seasonally adjusted trade surplus (the value of exports exceeded that of imports) of \$14 million (0.1 percent of exports).



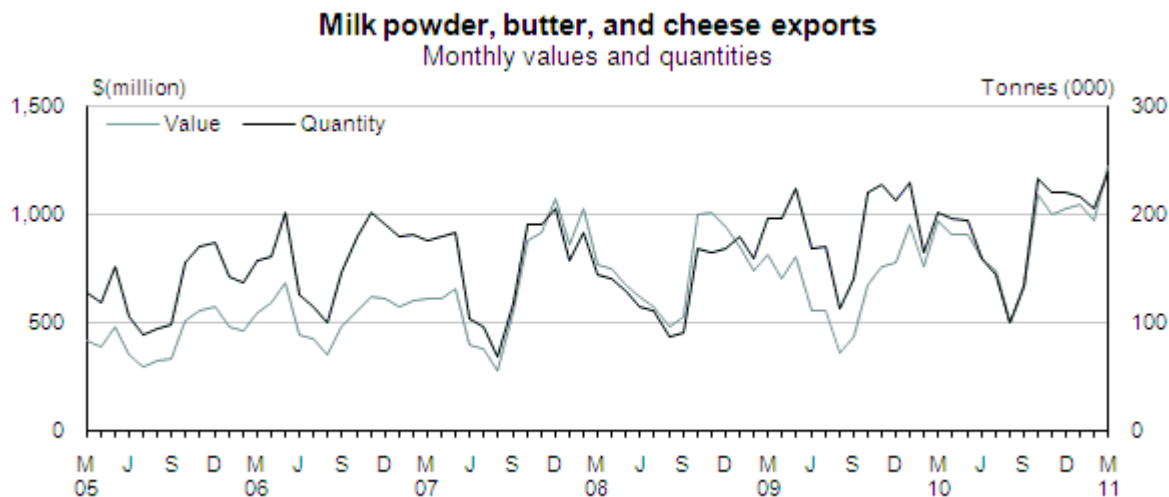
## March 2011 month – actual values

In the March 2011 month, merchandise exports were valued at \$4.5 billion, up \$454 million (11 percent) from March 2010. The monthly value of exports reached a new high in March 2011, surpassing the previous high of \$4.2 billion in May 2010.

In the March 2011 month compared with the March 2010 month, key increases and decreases in the value of exports by commodity and by country of destination were as follows:

By commodity:

- Milk powder, butter, and cheese exports recorded the largest increase, up \$251 million (26 percent). This was led by an increase in unsweetened whole milk powder. Unsalted butter was also a significant contributor.



- Logs, wood, and wood articles showed the next-largest increase, up \$63 million (24 percent), led by pinus radiata logs.
- Meat and edible offal was the third-largest increase, up \$59 million (10 percent), led by fresh or chilled lamb cuts with bone in.
- Precious metals, jewellery, and coins increased \$27 million (35 percent), led by unwrought non-monetary gold.
- Crude oil recorded the largest decrease, down \$56 million (25 percent). Quantities were almost half those of March 2010 while prices were over 30 percent higher. Crude oil export shipments are relatively large and the timing of shipments impacts on monthly quantities and values.
- Fruit recorded the next-largest decrease, down \$20 million (20 percent), due to significantly less green kiwifruit exports compared with March 2010.

By country of destination:

- The People's Republic of China recorded the largest increase, up \$177 million (40 percent). The major contributors were milk powder, butter, and cheese (up \$125 million) and logs, wood, and wood articles (up \$49 million).
- The Republic of Korea recorded the second-largest increase, up \$62 million (59 percent), across a range of commodities led by iron and steel, and articles.
- The United States of America recorded the next-largest increase, up \$35 million (9.2 percent), led by meat and edible offal.
- Iran also recorded a significant increase, up \$34 million, led by milk powder, butter, and cheese. This is more than double the value of exports in March 2010.
- Japan recorded the largest decrease, down \$43 million (14 percent), across a range of commodities.

In the month of March 2011 merchandise imports were valued at \$4.1 billion, \$598 million (17 percent) higher than March 2010. Excluding large aircraft, March 2011 imports would have been \$379 million (11 percent) higher than March 2010.

In the month of March 2011 compared with March 2010 key increases and decreases in the value of imports by commodity and by country of origin were as follows:

By commodity:

- Aircraft and parts recorded the largest increase, up \$270 million, due to the one-off importation of large aircraft.
- Petroleum and products recorded the second-largest increase, up \$173 million (32 percent). Crude oil increased by \$108 million (29 percent), and partly refined petroleum increased by \$70 million (45 percent).
- Electrical machinery and equipment recorded the third-largest increase, up \$45 million (17 percent), with communications equipment recording the largest increase.
- Mechanical machinery and equipment had the next-largest increase, up \$33 million (7.6 percent), due to increases over a range of commodities.
- Inorganic chemicals recorded the largest decrease, down \$35 million (54 percent), due to a decrease in aluminium oxides.
- Fertiliser recorded the second-largest decrease, down \$24 million (43 percent).

By country of origin:

- The United States of America recorded the largest increase, up \$193 million (52 percent), due to imports of aircraft and parts, up \$240 million. There were decreases in mechanical machinery and equipment; vehicles; and food residues, waste, and fodder.
- Russia, Kuwait, Singapore and the Republic of Korea recorded the next-largest increases. The Russia and Kuwait increases were due to crude oil while the Singapore and the Republic of Korea increases were due to partly refined petroleum.
- Thailand had the second-largest non-petroleum increase, up \$53 million (46 percent), led by sugars and sugar confectionery.
- China was up \$39 million (8.3 percent), due to increases in mechanical machinery and equipment, and electrical machinery and equipment. Those increases were partly offset by a decrease in fertiliser imports.
- Malaysia and Qatar had the largest decreases, down \$71 million (32 percent) and \$46 million (38 percent) respectively, due to crude oil.

## **Trade balance March 2011 – actual values**

There was a trade surplus of \$464 million (10 percent of exports) in March 2011. Excluding the one-off importation of aircraft, the surplus would have been \$682 million (15 percent of the value of exports). This compares with an average surplus of 5.7 percent of exports over the preceding five March months.

There was an annual trade surplus of \$631 million (1.4 percent of exports) for the March 2011 year. This compares with an average deficit of 12 percent of exports over the preceding five March years. Before 2011, the last March year surplus was in 2002.

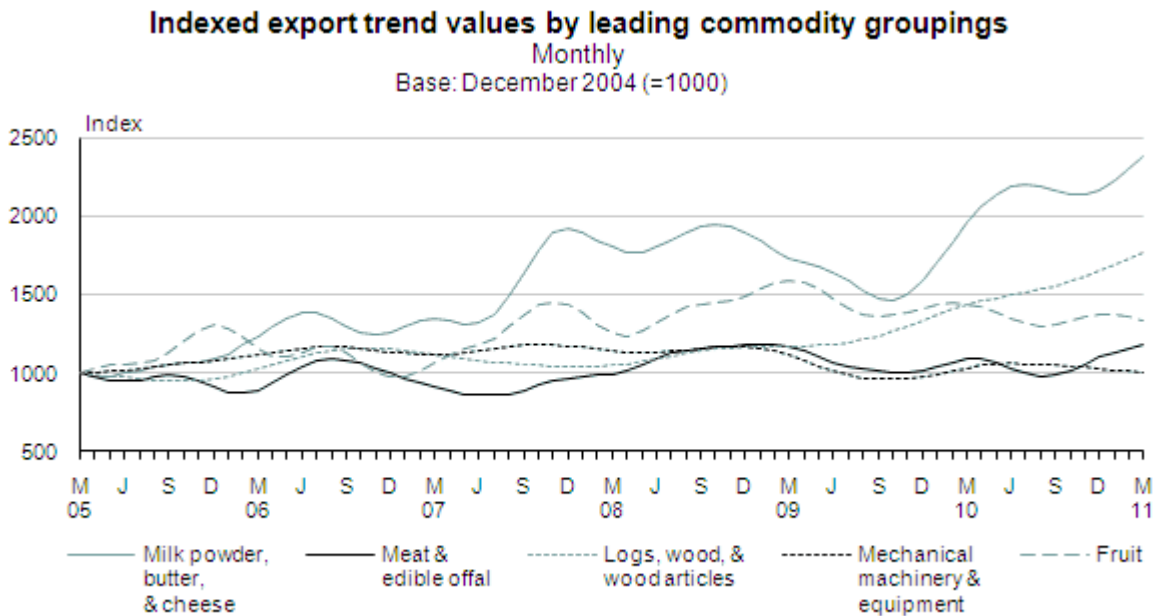
## Trend in monthly export values

The trend for export values has mainly increased since the most recent low point in October 2009 and export values are now 24 percent higher than they were in October 2009.

The milk powder, butter and cheese commodity grouping (up 63 percent) has contributed to just over half of the increase in export values since October 2009.

The logs, wood, and wood articles and meat and edible offal commodity groupings, have also been significant contributors to this growth, up 40 percent and 17 percent, respectively.

Recent changes in trend values of selected export commodity groupings are illustrated in the graph below.



## Exchange rate movements

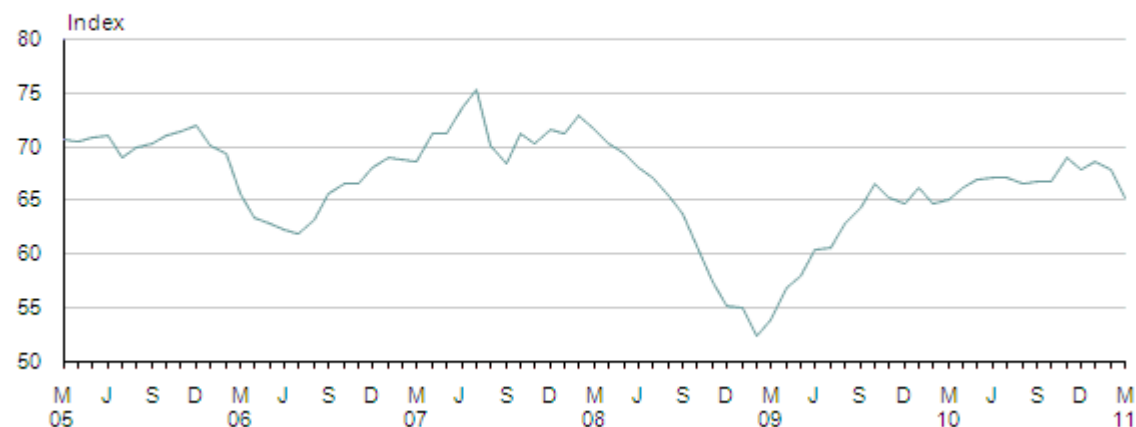
According to the Reserve Bank's Trade Weighted Index (TWI), the New Zealand dollar was 3.8 percent lower in March 2011 compared with February 2011, and 0.2 percent higher compared with March 2010.

The TWI fell 0.8 percent in the March 2011 quarter, compared with the December 2010 quarter. The TWI was 3.0 percent higher in the March 2011 quarter than it was in the same period of the previous year.

## Trade weighted index

Monthly

Base: June 1979 (=100)



Source: Reserve Bank of New Zealand

## Updates to previous statistics

Provisional values published on 29 March 2011 have been updated. Merchandise trade statistics for the latest three months are provisional to allow for the inclusion of late data and amendments.

	Published on 29 March 2011			Published on 29 April 2011			Change		
	\$(million) <sup>(1)</sup>			\$(million) <sup>(1)</sup>			\$(million) <sup>(1)</sup>		
	Exports (fob)	Imports (cif)	Balance (fob-cif)	Exports (fob)	Imports (cif)	Balance (fob-cif)	Exports (fob)	Imports (cif)	Balance (fob-cif)
Month of:									
Dec 2010	P 3,827	4,050	-223	3,828	4,046	-218	1	-4	5
Jan 2011	P 3,297	3,300	-3	3,308	3,298	10	10	-2	13
Feb 2011	P 3,870	3,676	194	3,867	3,675	193	-3	-2	-1
Year ended:									
Dec 2010	P 43,531	42,364	1,166	43,532	42,360	1,172	1	-4	5
Jan 2011	P 43,671	42,778	893	43,683	42,772	911	12	-6	18
Feb 2011	P 44,221	43,463	758	44,230	43,455	775	9	-8	17

(1) Figures are calculated on unrounded data.

### Symbol:

P provisional

For technical information contact:

Litia Tapu or Selena Eaquib

Wellington (04) 931 4600

Email: [info@stats.govt.nz](mailto:info@stats.govt.nz).

## Next release...

*Overseas Merchandise Trade: April 2011* will be released on 30 May 2011.

## Technical notes

### Impact of the Christchurch earthquake on 22 February 2011

The Christchurch earthquake on 22 February 2011 had a major effect on Statistics New Zealand information releases, following damage to our building in the city centre where many of our statistical releases are prepared, including overseas merchandise trade.

Staff working on overseas merchandise trade statistics were displaced by the earthquake. A more limited staffing arrangement than normal has been in place since then. This has had the following impacts on the compilation of overseas merchandise trade statistics:

- less editing and checking of data
- a reduction in the level of analysis of aggregated data and less informed commentary.

Statistics NZ is confident that the overseas merchandise trade totals published from February 2011 are an accurate reflection of what occurred and that the data and major movements at Harmonised System (HS) chapter level (two digit) are robust. Given data below HS chapter level has had less scrutiny it should be treated with a greater degree of caution than usual. This caution applies to the fine-level aggregates of overseas merchandise trade data available on Infoshare.

There has been no interruption in the supply of source data from New Zealand Customs service.

### Definitions

billion	1,000 million.
capital goods	Produced assets used repeatedly or continuously, for longer than one year, in industrial production processes. Examples are machinery, trucks, and aircraft.
cif	Cost of goods, including insurance and freight to New Zealand.
consumption goods	Goods used (without further transformation in industrial production processes) by households, government, or non-profit institutions serving households.
fob	Free on board (the value of goods at New Zealand ports before export).
Infoshare	Free-of-charge online tool that gives you access to a range of time-series data.
intermediate goods	Goods used up or transformed in industrial production processes.
merchandise trade	Exports or imports of goods that alter the nation's stock of material resources. Includes goods leased for a year or more. Excludes goods for repair.
provisional	Statistics for the latest three months are provisional, to allow for the inclusion of late data and amendments.
re-exports	Merchandise exports that were earlier imported into New Zealand and comprise less than 50 percent New Zealand content by value.
trade deficit	When the value of imports is more than the value of exports.
trade surplus	When the value of exports is more than the value of imports.
vfd	Value for duty (the value of imports before insurance and freight costs are added).

## Data source

Data is obtained from export and import entry documents lodged with the New Zealand Customs Service (NZCS). The data is processed and passed to Statistics NZ for further editing and compilation.

## Valuations

*Exports* (including re-exports) are valued fob (free on board) and are shown in New Zealand dollars. Estimated values are used for goods that are not already sold at the time of export entry lodgement.

*Imports* are valued at cif (cost including insurance and freight) and are shown in New Zealand dollars.

*Trade balance* values are calculated by deducting imports (cif) from exports (fob). These two valuations are not entirely comparable, because the cif valuation includes insurance and freight to New Zealand while the fob valuation excludes insurance and freight from New Zealand. However, imports in tables 1 and 2 are also shown at the vfd (value for duty) level, which excludes the insurance and freight component.

## Exchange rates

*Export* values given in foreign currencies are converted by Statistics NZ into New Zealand dollars, using weekly exchange rates when the statistics are compiled. For exports, a rise in the New Zealand dollar has a downward influence on prices, quantities, and values.

*Import* values are converted from foreign currencies when import documents are processed by NZCS. The exchange rates used are set by NZCS each fortnight. These rates are prepared 11 days before the start of the fortnight, so have a lag of 11 to 25 days compared with the daily rates published by the Reserve Bank. For imports, a rise in the New Zealand dollar has a downward influence on prices and an upward influence on quantities. The combined influence on values can be either positive or negative.

## Time of recording

### Exports

From the August 1997 reference month, exports are compiled by date of export. Previously, exports were generally compiled according to date of clearance by NZCS. This meant that some goods were allocated to the month following their actual month of export. Exports up to July 1997 that were not processed until August 1997 were assigned to the month of August 1997.

From 1 March 2004, NZCS has not allowed goods to be loaded for export until an export entry has been lodged and cleared. A study undertaken in 2001/02 indicated that export entries not being lodged might account for between 1 and 3 percent of exports at that time. There is a possibility that the change in NZCS processes may have reduced this undercoverage, although this has not been quantified.

## Imports

Imports are generally compiled by date of entry clearance by NZCS. NZCS entries are required from up to five days before, to 20 working days after, arrival of goods into New Zealand. The exception to this rule is for crude oil imports, which can have entries lodged later than 20 working days after entry into New Zealand.

Crude oil values for the latest month are estimated using actual quantities and country of origin data (provided by NZCS, based on information from the refinery at Marsden Point), together with estimated prices. These estimates for crude oil are replaced once actual entries are lodged with NZCS.

While all entries are provisional for the latest three months, and have the potential to be changed by the importer/exporter within this period, changes are not common, and generally do not have a material impact on the results. However, New Zealand has only a few ships carrying crude oil arriving each month, and each ship represents a high proportion of the monthly total of imported crude oil. Any variation in the data for crude oil resulting from a later lodgement date can result in a significant revision to the value. Once actual lodgements are received by Statistics NZ from NZCS, the value for crude oil can be regarded as robust.

There were 23 working days in March 2011, the same number as in March 2010.

## Commodity classification

Commodities are classified according to the New Zealand Harmonised System Classification (NZHSC).

The NZHSC was revised from the January 2007 reference month, to incorporate changes promulgated by the World Customs Organization. Details can be found in the *Overseas Merchandise Trade: January 2007* information release published on 26 February 2007.

## Standard International Trade Classification

The Standard International Trade Classification (SITC) is an output classification (using Harmonised System (HS) codes at the six-digit level as building blocks), designed by the United Nations as an analytical tool for economic analysis, which includes some simple implications regarding level of processing. Published figures are at a high level of aggregation; more disaggregated information is available on [Infoshare](#). For customised jobs using the SITC Rev 4 classification, contact customer services at: [info@stats.govt.nz](mailto:info@stats.govt.nz).

## Broad economic category groups

Broad economic category (BEC) groups are arranged, as far as practicable, to align with the System of National Accounts' three basic classes: capital goods, intermediate goods, and consumption goods. Commodities in BEC groups are categorised on the basis of their main end use. This means, for example, that all video recorders are treated as consumption goods even though some are used in business. Similarly, all helicopters are treated as transport equipment even though some are military goods (and are treated as such in the National Accounts).

## Trend series

Time series can be split into trend, seasonal, and irregular components. Seasonal adjustment removes the seasonal component, while trend estimation removes the seasonal and irregular components. Trend estimates reveal the underlying direction of movement in a series and are used to identify turning points.

The trend series are calculated using X-12-ARIMA, which adjusts for outlying values and uses a centred moving average. The length of the centred moving average is selected automatically and can be 9, 13, or 23 months, depending on the relative variability of the irregular component compared with the trend. A long moving average has the effect of smoothing the trend series but slowing the response to underlying changes in growth rates, while a short moving average produces a trend series that is less smooth but quicker to identify turning points.

To improve estimation of the underlying movement, the imports trend is calculated after removal of individual import items that have cif values of \$100 million or more, such as large aircraft and ships. The trade balance trend is calculated by subtracting the imports trend from the exports trend.

Trend figures are recalculated each month. The use of new monthly data means that previously published trend estimates are subject to revision. These revisions mainly affect the latest months, and can be large if a trade value is initially treated as an outlier but is later found to be part of the underlying trend.

## Seasonally adjusted series

These are calculated for calendar quarters, using X-12-ARIMA, and published in the March, June, September, and December releases.

Seasonal adjustment removes the estimated impact of regular seasonal events, such as pre-Christmas purchasing, from time series. This makes the figures for adjacent periods more comparable. Seasonally adjusted figures are estimates and are subject to revision each quarter, with the largest changes generally occurring in the latest quarters.

Further information is on the [Statistics NZ website](#).

## Confidential items

Under Section 37A (d) of the Statistics Act, the Government Statistician may disclose details of external trade, movement of ships, and cargo handled at ports. However, Statistics NZ understands that the release of merchandise trade commodity information can, in some cases, place commercially sensitive information in the public domain. Statistics NZ is able to provide a limited form of confidential status for commodity items (at the discretion of the Government Statistician), upon application by a company or business.

In practice, all confidential HS codes are aggregated into the code 9809.00.00.00 in order to protect their confidentiality and to maintain total export and import values. Any aggregations of HS codes below this level, which encompass confidential 10-digit codes, exclude the confidential value(s) for these codes.

The only aggregates that include the confidential codes are total exports, total imports, and the total exports and imports by country.

## Concepts

Overseas Merchandise Trade (OMT) statistics are compiled in close accordance with the United Nations' International Merchandise Trade Statistics Concepts and Definitions. OMT data, after adjustment, is used in the Balance of Payments and National Accounts. The adjustments are for coverage, timing, valuation, and classification, and are explained in the [Balance of Payments – Sources and Methods 2004](#) publication.

## Additional information

Other information on overseas trade is available from:

- Statistics NZ website: [www.stats.govt.nz](http://www.stats.govt.nz)
- [Infoshare](#)
- *The New Zealand Official Yearbook*.

Related information releases are:

- *Overseas Cargo Statistics*: ISSN 1178-2838
- *Overseas Trade Indexes – Prices*: ISSN 1178-0339
- *Overseas Trade Indexes – Volumes*: ISSN 1178-0347
- *Balance of Payments (quarterly)*: ISSN 1178-0215
- *Balance of Payments (annual)*: ISSN 1178-0223
- *Economic Survey of Manufacturing*: ISSN 1178-024X.

## More information

For more information, follow the [link](#) from the Technical notes of this release on the Statistics NZ website.

## Crown copyright ©



This work is licensed under the [Creative Commons Attribution 3.0 New Zealand licence](#). You are free to copy, distribute, and adapt the work for non-commercial purposes, as long as you attribute the work to Statistics NZ and abide by the other licence terms. Please note you may not use any departmental or governmental emblem, logo, or coat of arms in any way that infringes any provision of the [Flags, Emblems, and Names Protection Act 1981](#). Use the wording 'Statistics New Zealand' in your attribution, not the Statistics NZ logo.

## Liability

While all care and diligence has been used in processing, analysing, and extracting data and information in this publication, Statistics NZ gives no warranty it is error-free and will not be liable for any loss or damage suffered by the use directly, or indirectly, of the information in this publication.

## **Timing**

Timed statistical releases are delivered using postal and electronic services provided by third parties. Delivery of these releases may be delayed by circumstances outside the control of Statistics NZ. Statistics NZ accepts no responsibility for any such delays.

## Tables

The following tables are printed with this information release and can also be downloaded from the Statistics New Zealand website in Excel format. If you do not have access to Excel, you may use the [Excel file viewer](#) to view, print, and export the contents of the file.

1. Overseas merchandise trade, actual values
2. Overseas merchandise trade, seasonally adjusted and trend values – monthly
3. Exports by destination
4. Imports by country of origin
5. Exports of main commodities
6. Imports of main commodities
7. Imports by broad economic category (BEC) group
8. Exchange rates
9. Related series, livestock, cars, and crude oil
10. Exports and imports by standard international trade classification (SITC)
11. Exports by top 10 HS categories, values – seasonally adjusted
12. Exports by top 10 HS categories, quantities – seasonally adjusted
13. Imports by selected HS categories, values – seasonally adjusted
14. Exports by top 10 HS categories, values – trend
15. Exports by top 10 HS categories, quantities – trend
16. Imports by selected HS categories, values – trend
17. Overseas merchandise trade, seasonally adjusted and trend values – quarterly
18. Exports by top 10 HS categories, values – seasonally adjusted – quarterly
19. Exports by top 10 HS categories, quantities – seasonally adjusted – quarterly
20. Imports by broad economic category (BEC) group, values – seasonally adjusted – quarterly

Table 1

**Overseas merchandise trade**Actual values<sup>(1)(2)</sup>

		Exports (including re-exports) (fob)	Change from same period of previous year	Imports (cif)	Change from same period of previous year	Trade balance (exports minus imports) (fob-cif)	Re-exports (fob)	Large import items <sup>(3)</sup> (cif)	Imports (vfd)
Infoshare series		EXPM.SCT99F		IMP.M.SCT99C			EXPM.SRF	IMP.M.SIC	IMP.M.SCT99V
		\$(million)	%	\$(million)	%	\$(million)			
<b>Year ended</b>									
March	2001	30,536	24.1	31,463	12.7	-927	1,056	560	29,514
March	2002	32,695	7.1	31,829	1.2	866	1,168	0	29,757
March	2003	30,271	-7.4	32,168	1.1	-1,897	1,104	0	30,179
March	2004	28,600	-5.5	32,355	0.6	-3,755	1,096	0	30,374
March	2005	31,088	8.7	35,446	9.6	-4,358	1,375	101	33,139
March	2006	31,098	0.0	38,160	7.7	-7,062	1,397	840	35,715
March	2007	35,303	13.5	41,082	7.7	-5,779	1,824	926	38,554
March	2008	38,126	8.0	42,653	3.8	-4,528	1,481	553	40,157
March	2009	43,353	13.7	48,037	12.6	-4,684	1,945	580	45,177
March	2010	39,559	-8.8	39,719	-17.3	-160	1,720	571	37,640
March	2011 P	44,684	13.0	44,053	10.9	631	1,802	672	41,644
<b>Three months ended</b>									
March	2010	10,553	-1.1	9,347	-5.1	1,206	361	0	8,827
June	2010	11,950	10.3	10,300	3.6	1,651	456	0	9,740
September	2010	9,855	12.8	10,926	7.2	-1,071	486	0	10,297
December	2010	11,174	18.5	11,788	15.1	-614	457	230	11,129
March	2011 P	11,705	10.9	11,039	18.1	666	404	442	10,478
<b>Month</b>									
2009	Mar	4,053	18.1	3,615	4.0	438	290	0	3,402
	Apr	3,641	-4.8	3,319	-19.4	322	159	0	3,131
	May	3,962	5.9	3,056	-21.8	906	166	0	2,891
	Jun	3,233	-10.0	3,564	-6.4	-331	175	571	3,417
	Jul	3,173	-7.6	3,350	-20.8	-178	130	0	3,185
	Aug	2,745	-23.2	3,461	-21.7	-717	110	0	3,285
	Sep	2,822	-11.1	3,384	-23.5	-561	126	0	3,213
	Oct	2,955	-22.8	3,457	-28.3	-501	111	0	3,285
	Nov	3,061	-16.8	3,341	-21.8	-280	122	0	3,154
	Dec	3,413	-11.1	3,439	-17.7	-26	260	0	3,251
2010	Jan	3,157	-0.5	2,886	-11.8	271	96	0	2,736
	Feb	3,320	-3.5	2,992	1.1	328	107	0	2,824
	Mar	4,076	0.6	3,468	-4.1	608	158	0	3,268
	Apr	3,960	8.8	3,300	-0.6	660	155	0	3,118
	May	4,197	5.9	3,427	12.1	770	147	0	3,244
	Jun	3,793	17.3	3,572	0.2	221	154	0	3,377
	Jul	3,553	12.0	3,739	11.6	-186	146	0	3,525
	Aug	3,130	14.0	3,560	2.9	-430	202	0	3,358
	Sep	3,172	12.4	3,626	7.2	-455	138	0	3,413
	Oct	3,683	24.6	3,903	12.9	-220	163	0	3,683
	Nov	3,662	19.6	3,839	14.9	-177	145	0	3,607
	Dec	3,828	12.2	4,046	17.6	-218	148	230	3,839
2011	Jan P	3,308	4.8	3,298	14.3	10	119	0	3,123
	Feb P	3,867	16.5	3,675	22.8	193	131	224	3,491
	Mar P	4,529	11.1	4,066	17.2	464	155	218	3,864

1. Exports are valued fob (free on board – the value of goods at New Zealand ports before export) and include re-exports. Imports are valued cif (cost, including insurance and freight to New Zealand) or vfd (value for duty – the value of imports before insurance and freight costs are added). All values are in New Zealand dollars.

2. Figures are calculated on unrounded data.

3. Individual import items with cif values of \$100 million or more (such as large aircraft and ships).

**Symbol:**

P provisional (Statistics for the latest three months are provisional.)

Source: Statistics New Zealand

Table 2

**Overseas merchandise trade**Seasonally adjusted and trend values – monthly<sup>(1)(2)(3)</sup>

Infoshare series	Seasonally adjusted <sup>(4)</sup>					Trend <sup>(5)</sup>					
	Exports (including re-exports) (fob)	Change from previous month	Imports (cif)	Change from previous month	Trade balance (exports minus imports)	Exports (including re-exports) (fob)	Change from previous month	Imports (cif) <sup>(6)</sup>	Change from previous month	Trade balance (exports minus imports) <sup>(6)</sup>	
	OTTM.SSEF		OTTM.SSIC			OTTM.STEF		OTTM.STIC			
	\$(million)	%	\$(million)	%	\$(million)	\$(million)	%	\$(million)	%	\$(million)	
<b>Month</b>											
2008	Mar	3,233	-9.2	3,783	0.9	-550	3,417	-0.5	3,777	1.4	-360
	Apr	3,404	5.3	4,229	11.8	-825	3,423	0.2	3,844	1.8	-421
	May	3,157	-7.3	3,938	-6.9	-781	3,446	0.7	3,924	2.1	-478
	Jun	3,760	19.1	4,097	4.1	-337	3,495	1.4	4,014	2.3	-520
	Jul	3,471	-7.7	3,954	-3.5	-483	3,563	2.0	4,105	2.3	-543
	Aug	4,189	20.7	4,390	11.0	-201	3,631	1.9	4,173	1.7	-543
	Sep	3,442	-17.8	4,150	-5.5	-707	3,682	1.4	4,197	0.6	-515
	Oct	3,798	10.3	4,232	2.0	-434	3,708	0.7	4,160	-0.9	-452
	Nov	3,918	3.1	4,145	-2.1	-228	3,709	0	4,067	-2.2	-358
	Dec	3,617	-7.7	3,958	-4.5	-341	3,687	-0.6	3,935	-3.3	-248
2009	Jan	3,599	-0.5	3,623	-8.5	-24	3,639	-1.3	3,779	-3.9	-140
	Feb	3,475	-3.4	3,325	-8.2	150	3,566	-2.0	3,625	-4.1	-59
	Mar	3,621	4.2	3,769	13.3	-148	3,488	-2.2	3,492	-3.7	-4
	Apr	3,312	-8.5	3,441	-8.7	-129	3,418	-2.0	3,385	-3.1	33
	May	3,483	5.2	3,241	-5.8	243	3,358	-1.8	3,304	-2.4	54
	Jun	3,156	-9.4	3,603	11.2	-446	3,293	-1.9	3,241	-1.9	52
	Jul	3,266	3.5	3,189	-11.5	77	3,224	-2.1	3,190	-1.6	34
	Aug	3,265	0	3,447	8.1	-182	3,166	-1.8	3,156	-1.1	10
	Sep	3,113	-4.7	3,194	-7.4	-80	3,130	-1.1	3,145	-0.4	-15
	Oct	2,972	-4.5	3,073	-3.8	-101	3,126	-0.2	3,157	0.4	-32
	Nov	3,202	7.7	3,198	4.1	3	3,151	0.8	3,189	1.0	-38
	Dec	3,205	0.1	3,212	0.4	-7	3,211	1.9	3,237	1.5	-26
2010	Jan	3,711	15.8	3,362	4.7	349	3,297	2.7	3,301	2.0	-4
	Feb	3,347	-9.8	3,347	-0.4	0	3,404	3.2	3,376	2.3	28
	Mar	3,511	4.9	3,472	3.7	39	3,509	3.1	3,453	2.3	56
	Apr	3,569	1.6	3,426	-1.3	143	3,586	2.2	3,512	1.7	75
	May	3,727	4.4	3,634	6.1	93	3,638	1.4	3,547	1.0	91
	Jun	3,696	-0.8	3,603	-0.9	93	3,667	0.8	3,559	0.3	108
	Jul	3,710	0.4	3,623	0.6	86	3,671	0.1	3,550	-0.3	122
	Aug	3,541	-4.6	3,428	-5.4	113	3,664	-0.2	3,531	-0.5	133
	Sep	3,594	1.5	3,438	0.3	156	3,664	0	3,525	-0.2	139
	Oct	3,880	8.0	3,665	6.6	215	3,683	0.5	3,546	0.6	137
	Nov	3,600	-7.2	3,488	-4.8	112	3,722	1.1	3,598	1.5	124
	Dec	3,686	2.4	3,868	10.9	-183	3,771	1.3	3,670	2.0	101
2011	Jan	3,924	6.5	3,823	-1.2	100	3,815	1.1	3,740	1.9	74
	Feb	3,899	-0.6	4,078	6.7	-178	3,846	0.8	3,791	1.3	55
	Mar	3,829	-1.8	3,987	-2.2	-159	3,867	0.5	3,817	0.7	50

1. Exports are valued fob (free on board – the value of goods at New Zealand ports before export) and include re-exports, while imports are valued cif (cost, including insurance and freight to New Zealand). All values are in New Zealand dollars.

2. Figures are calculated on unrounded data.

3. Values, particularly for the latest periods, are subject to revision each month.

4. Seasonally adjusted values exclude estimated seasonal fluctuations.

5. Trend values exclude estimated seasonal fluctuations and short-term irregular movements.

6. Excludes individual import items with (cif) values of \$100 million or more (such as large aircraft and ships).

Source: Statistics New Zealand

Table 3

**Exports by destination**<sup>(1)(2)</sup>

Destination			Month of March			Three months ended March			12 months ended March		
Rank	Code <sup>(3)</sup>	Name	2010	2011 P	%	2010	2011 P	%	2010	2011 P	%
			\$(million)			\$(million)			\$(million)		
			change			change			change		
<b>Country groups</b>											
96		Asia	1,558	1,770	13.6	4,186	4,794	14.5	15,036	17,858	18.8
95		Europe	566	628	11.0	1,413	1,435	1.6	5,476	5,447	-0.5
06		OECD	2,385	2,533	6.2	5,984	6,373	6.5	23,160	25,040	8.1
01		APEC	2,882	3,146	9.2	7,462	8,350	11.9	27,959	31,825	13.8
05		EU	522	584	11.9	1,313	1,313	0.0	5,162	4,993	-3.3
02		ASEAN	411	389	-5.5	1,177	1,087	-7.7	4,367	4,296	-1.6
<b>Top 20 countries</b>											
1	AU	Australia	959	967	0.9	2,380	2,500	5.0	9,307	10,145	9.0
2	CN	People's Republic of China	447	624	39.6	1,140	1,700	49.1	3,804	5,386	41.6
3	US	United States of America	378	413	9.2	907	1,026	13.1	3,523	3,878	10.1
4	JP	Japan	318	275	-13.5	798	776	-2.7	2,834	3,354	18.3
5	KR	Republic of Korea	105	167	58.8	324	422	30.1	1,280	1,511	18.1
6	GB	United Kingdom	166	192	15.6	451	433	-3.9	1,609	1,510	-6.1
7	IN	India	79	77	-2.2	179	196	9.3	652	917	40.8
8	TW	Taiwan	70	95	36.0	205	243	18.6	791	881	11.4
9	ID	Indonesia	93	73	-20.9	263	210	-20.0	972	878	-9.6
10	HK	Hong Kong (SAR)	64	63	-1.7	202	162	-19.7	788	826	4.8
11	MY	Malaysia	72	80	10.3	206	214	3.8	721	783	8.7
12	SG	Singapore	74	62	-15.9	254	166	-34.6	1,194	738	-38.1
13	TH	Thailand	64	66	3.4	144	201	39.7	494	736	49.2
14	PH	Philippines	69	60	-12.3	201	177	-11.9	617	705	14.2
15	DE	Germany	67	88	30.9	185	211	14.1	684	684	0.1
16	SA	Saudi Arabia	64	73	12.8	161	178	10.2	513	632	23.3
17	CA	Canada	44	55	25.6	109	144	31.8	480	532	10.9
18	NL	Netherlands	60	82	36.7	125	147	17.6	484	516	6.5
19	VE	Venezuela	23	36	58.5	51	74	44.2	334	486	45.5
20	AE	United Arab Emirates	40	57	44.4	102	146	42.4	390	459	17.8
<b>Summary</b>											
-		Top 20 countries	3,255	3,605	10.8	8,389	9,327	11.2	31,469	35,558	13.0
-		Destination unknown – EU	18	4	-79.6	18	4	-79.4	339	243	-28.2
-		Other countries	765	877	14.6	2,034	2,227	9.5	7,363	8,344	13.3
-		<b>All countries</b>	<b>4,038</b>	<b>4,486</b>	<b>11.1</b>	<b>10,441</b>	<b>11,558</b>	<b>10.7</b>	<b>39,170</b>	<b>44,146</b>	<b>12.7</b>
-		Bunkering, passengers' baggage and ships' stores	38	44	16.6	112	147	31.3	389	538	38.5
99		<b>All merchandise exports</b>	<b>4,076</b>	<b>4,529</b>	<b>11.1</b>	<b>10,553</b>	<b>11,705</b>	<b>10.9</b>	<b>39,559</b>	<b>44,684</b>	<b>13.0</b>

1. Exports are valued fob (free on board – the value of goods at New Zealand ports before export, in New Zealand dollars) and include re-exports.

2. Figures are calculated on unrounded data.

3. These codes are used in Infoshare series EXPM.SCT&&F (at position '&&').

OECD – Organisation for Economic Co-operation and Development (includes Israel from 1 October 2010).

APEC – Asia-Pacific Economic Cooperation countries.

EU – European Union.

ASEAN – Association of Southeast Asian Nations.

**Symbols:**

P provisional (Statistics for the latest three months are provisional.)

- no code available

**Source:** Statistics New Zealand

Table 4

**Imports by country of origin<sup>(1)(2)</sup>**

Origin			Month of March			Three months ended March			12 months ended March		
Rank	Code <sup>(3)</sup>	Name	2010	2011 P	%	2010	2011 P	%	2010	2011 P	%
			\$(million)			\$(million)			\$(million)		
			change			change			change		
<b>Country groups</b>											
96		Asia	1,484	1,633	10.0	4,120	4,704	14.2	16,630	19,370	16.5
95		Europe	544	732	34.5	1,509	1,937	28.4	7,129	7,437	4.3
06		OECD	1,991	2,323	16.7	5,320	6,064	14.0	23,831	25,003	4.9
01		APEC	2,533	2,968	17.2	6,957	8,063	15.9	29,120	32,871	12.9
05		EU	518	596	15.1	1,352	1,589	17.6	6,475	6,456	-0.3
02		ASEAN	533	603	13.1	1,322	1,688	27.7	5,186	6,519	25.7
<b>Top 25 countries</b>											
1	AU	Australia	652	632	-3.0	1,760	1,686	-4.2	7,558	7,623	0.9
2	CN	People's Republic of China	473	512	8.3	1,451	1,628	12.2	6,028	6,939	15.1
3	US	United States of America	373	566	51.8	902	1,360	50.9	4,221	4,851	14.9
4	JP	Japan	239	253	6.2	613	684	11.4	2,658	3,177	19.5
5	SG	Singapore	102	185	81.3	281	496	76.6	1,410	1,837	30.3
6	DE	Germany	158	157	-0.2	393	421	7.2	1,644	1,767	7.5
7	MY	Malaysia	222	151	-31.9	335	439	30.9	1,184	1,627	37.4
8	TH	Thailand	115	169	46.2	304	380	25.0	1,122	1,448	29.0
9	KR	Republic of Korea	99	155	56.2	375	378	0.8	1,454	1,390	-4.4
10	GB	United Kingdom	75	89	19.1	222	226	1.8	945	959	1.4
11	AE	United Arab Emirates	125	144	15.4	185	176	-4.8	608	876	44.1
12	IT	Italy	60	95	59.4	157	226	43.5	681	770	13.1
13	QA	Qatar	121	75	-37.8	308	228	-25.8	1,049	746	-28.9
14	ID	Indonesia	69	68	-0.6	140	181	29.2	660	688	4.3
15	TW	Taiwan	84	47	-43.9	210	162	-23.1	679	683	0.6
16	FR	France	61	74	21.3	139	173	24.3	1,233	629	-48.9
17	RU	Russia	0	107	...	81	204	151.8	264	548	107.7
18	BN	Brunei Darussalam	0	0	-52.2	195	99	-49.1	516	531	3.0
19	CA	Canada	35	41	17.8	121	121	-0.4	496	521	5.0
20	KW	Kuwait	0	96	...	49	223	351.8	185	403	117.6
21	DK	Denmark	18	17	-1.1	41	83	101.2	185	386	108.1
22	SA	Saudi Arabia	20	22	9.4	46	113	146.1	262	372	42.2
23	IN	India	32	33	3.8	84	86	2.0	359	370	3.1
24	CH	Switzerland	22	25	16.0	65	109	67.8	339	351	3.7
25	NL	Netherlands	32	27	-16.2	76	74	-2.8	323	307	-5.0
<b>Summary</b>											
-		Top 25 countries	3,185	3,743	17.5	8,534	9,955	16.7	36,062	39,799	10.4
-		Other countries	283	323	14.0	813	1,084	33.4	3,657	4,253	16.3
99		<b>All merchandise imports</b>	<b>3,468</b>	<b>4,066</b>	<b>17.2</b>	<b>9,347</b>	<b>11,039</b>	<b>18.1</b>	<b>39,719</b>	<b>44,053</b>	<b>10.9</b>

1. Imports are valued cif (cost, including insurance and freight to New Zealand, in New Zealand dollars).

2. Figures are calculated on unrounded data.

3. These codes are used in Infoshare series IMPM.SCT&&C (at position '&&').

OECD – Organisation for Economic Co-operation and Development (includes Israel from 1 October 2010).

APEC – Asia-Pacific Economic Cooperation countries.

EU – European Union.

ASEAN – Association of Southeast Asian Nations.

**Symbols:**

P provisional (Statistics for the latest three months are provisional.)

- no code available

... not applicable

**Source:** Statistics New Zealand

Table 5

Exports of main commodities<sup>(1)(2)</sup>

HS code <sup>(3)</sup>	Commodity	Month of			Three months ended			12 months ended		
		March			March			March		
		2010	2011 P	%	2010	2011 P	%	2010	2011 P	%
		\$(million)		change	\$(million)		change	\$(million)		change
0401-0406	Milk powder, butter, and cheese	967	1,218	26.0	2,676	3,232	20.8	8,293	10,862	31.0
02	Meat and edible offal	576	635	10.2	1,572	1,663	5.8	4,997	5,180	3.7
44	Logs, wood, and wood articles <sup>(4)</sup>	264	327	23.8	625	772	23.5	2,459	3,096	25.9
2709	Crude oil	228	172	-24.7	524	551	5.1	1,996	1,972	-1.2
84	Mechanical machinery and equipment	154	151	-1.9	363	358	-1.3	1,622	1,718	5.9
0803-0814	Fruit	99	79	-20.3	169	146	-13.4	1,586	1,445	-8.9
03	Fish, crustaceans, and molluscs	101	112	11.5	277	318	14.7	1,201	1,348	12.2
76	Aluminium and aluminium articles	98	107	8.8	283	306	8.3	969	1,236	27.6
2204	Wine	98	103	5.9	235	222	-5.6	1,036	1,076	3.8
85	Electrical machinery and equipment	86	97	12.7	221	229	3.9	966	1,038	7.4
72-73	Iron and steel, and articles <sup>(4)</sup>	74	92	24.2	182	217	19.2	795	913	15.0
71	Precious metals, jewellery, and coins	76	102	35.2	197	220	11.4	777	899	15.8
19	Preparations of cereals, flour, and starch	79	69	-12.0	206	193	-6.5	865	861	-0.5
47	Wood pulp and waste paper	63	47	-25.0	156	176	12.6	613	705	15.1
3501	Casein and caseinates	62	74	20.3	173	193	11.6	679	690	1.6
5101	Wool	62	88	42.0	156	200	28.2	535	669	25.1
90	Optical, medical, and measuring equipment	57	57	-0.5	147	142	-3.1	669	641	-4.1
21	Miscellaneous edible preparations	58	72	23.0	150	177	18.1	586	640	9.2
50-63 <sup>(5)</sup>	Textiles and textile articles	63	64	0.8	149	146	-2.2	600	625	4.1
48	Paper and paperboard, and articles <sup>(4)</sup>	42	50	18.8	127	145	13.8	533	591	11.0
41	Raw hides, skins, and leather <sup>(4)</sup>	41	54	30.6	103	135	31.0	361	475	31.4
39	Plastic and plastic articles	47	42	-10.9	110	99	-9.5	433	469	8.4
07	Vegetables	72	91	27.1	159	189	19.1	395	455	15.1
05	Other animal originated products	38	45	18.7	99	113	14.0	324	335	3.3
89	Ships, boats, and floating structures	10	10	-3.4	40	19	-52.6	328	283	-13.8
16	Meat and fish preparations	23	24	0.9	60	60	-0.1	259	282	9.0
30	Pharmaceutical products	24	30	25.5	58	68	17.9	269	279	3.7
3502-3507	Albumins, gelatin, glues, and enzymes	18	31	78.7	57	79	38.0	211	269	27.4
20	Preparations of vegetables, fruit, and nuts	25	24	-1.1	57	58	1.5	257	269	4.5
23	Food residues, wastes, and fodder	26	26	-1.9	72	66	-8.3	278	258	-7.0
22 <sup>(6)</sup>	Beverages, spirits, and vinegar <sup>(4)</sup>	18	18	1.3	42	44	6.1	188	226	20.1
87	Vehicles, parts, and accessories	25	24	-4.4	67	52	-22.3	272	226	-16.9
01	Live animals	22	16	-29.0	76	65	-13.9	195	214	10.1
88	Aircraft and parts	10	23	125.7	25	42	68.0	183	211	15.1
94	Furniture, furnishings, and light fittings	13	15	14.6	34	38	10.6	164	188	14.9
38	Other chemical products <sup>(4)</sup>	12	11	-10.7	31	37	19.3	146	181	24.1
15	Animal or vegetable fats and oils <sup>(4)</sup>	25	6	-76.2	51	47	-8.8	168	172	2.3
12	Seeds, raw peanuts, and soya flour <sup>(4)</sup>	17	16	-3.0	31	34	7.9	148	154	4.2
17	Sugars and sugar confectionery	11	13	27.7	28	35	23.9	141	149	5.9
74	Copper and copper articles	9	16	73.1	27	37	40.0	120	140	16.3
-	Other commodities <sup>(4)</sup>	191	182	-4.8	475	527	10.8	2,060	2,124	3.1
9809	Confidential data <sup>(7)</sup>	92	95	...	263	255	...	883	1,120	...
<b>01-98</b>	<b>All merchandise exports</b>	<b>4,076</b>	<b>4,529</b>	<b>11.1</b>	<b>10,553</b>	<b>11,705</b>	<b>10.9</b>	<b>39,559</b>	<b>44,684</b>	<b>13.0</b>

1. Exports are valued fob (free on board – the value of goods at New Zealand ports before export, in New Zealand dollars) and include re-exports.

2. Figures are calculated on unrounded data.

3. These codes are used in Infoshare series EXPM.S2T&&F (at position '&&'). Exceptions are:

0401-0406=EXPM.S2U04AF, 0803-0814=EXPM.S2U08AF, 22<sup>(6)</sup>=EXPM.S2U22BF, 2204=EXPM.S2U22AF, 2709=EXPM.S2U27CF,

2710-2715=EXPM.S2U27DF, 3501=EXPM.S2U35AF, 3502-3507=EXPM.S2U35BF, 5101=EXPM.S2U51AF, 50-63<sup>(5)</sup>=EXPM.S2O50T063F,

72-73=EXPM.S2O72T073F, 9809=EXPM.S2U98CF and 01-98=EXPM.S2TZZF.

4. Export values exclude confidential data. (This may affect percentage changes.)

5. Excludes wool (HS code 5101).

6. Excludes wine (HS code 2204).

7. Data that is no longer confidential is assigned to specific commodities.

HS – New Zealand Harmonised System Classification. (HS2007 applies to January 2007 and later data.)

**Symbols:**

P provisional (Statistics for the latest three months are provisional.)

- no code available

... not applicable

Source: Statistics New Zealand

Table 6

Imports of main commodities<sup>(1)(2)</sup>

HS code <sup>(3)</sup>	Commodity	Month of			Three months ended			12 months ended		
		March			March			March		
		2010	2011 P	%	2010	2011 P	%	2010	2011 P	%
		\$(million)		change	\$(million)		change	\$(million)		change
2709-2715	Petroleum and products <sup>(4)</sup>	539	712	32.2	1,615	1,956	21.1	6,009	6,791	13.0
84	Mechanical machinery and equipment	433	466	7.6	1,113	1,307	17.5	4,763	5,389	13.1
87	Vehicles, parts, and accessories	349	355	1.7	880	923	4.9	3,382	4,310	27.5
85	Electrical machinery and equipment <sup>(5)</sup>	263	308	17.2	699	847	21.2	3,692	3,778	2.3
50-63	Textiles and textile articles	164	165	0.8	495	537	8.5	1,880	2,045	8.8
39	Plastic and plastic articles	135	139	3.0	361	394	9.0	1,492	1,644	10.2
90	Optical, medical, and measuring equipment	118	130	10.2	291	328	12.6	1,314	1,363	3.7
88	Aircraft and parts	23	293	...	94	580	515.4	1,451	1,275	-12.1
72-73	Iron and steel, and articles <sup>(5)</sup>	91	106	15.6	257	291	13.5	1,077	1,221	13.4
30	Pharmaceutical products	102	95	-7.3	268	283	5.6	1,129	1,150	1.9
48	Paper and paperboard, and articles <sup>(5)</sup>	98	88	-10.5	262	243	-7.4	966	976	1.0
23	Food residues, wastes, and fodder	58	57	-2.8	117	197	68.3	384	644	67.5
94	Furniture, furnishings, and light fittings	40	42	6.5	117	135	15.6	538	628	16.8
40	Rubber and rubber articles	45	53	18.1	123	135	9.6	497	556	11.9
31	Fertilizers	56	32	-43.4	100	137	37.8	427	555	30.0
21	Miscellaneous edible preparations	48	49	1.7	130	133	2.6	532	541	1.8
38	Other chemical products	41	46	13.1	124	119	-4.2	484	518	6.8
28	Inorganic chemicals <sup>(5)</sup>	65	30	-53.7	136	131	-3.2	459	503	9.4
33	Essential oils, perfumes, and toiletries	38	42	9.2	100	105	5.2	447	454	1.5
95	Toys, games, and sports requisites	27	33	24.4	79	84	6.2	446	438	-1.8
22	Beverages, spirits, and vinegar	37	37	0.3	100	96	-4.1	427	437	2.4
49	Books, newspapers, and printed matter	36	32	-10.1	97	93	-4.0	413	417	0.9
19	Preparations of cereals, flour, and starch	33	37	10.7	87	88	1.0	371	395	6.6
17	Sugars and sugar confectionery <sup>(5)</sup>	15	46	205.4	60	112	86.5	278	362	30.4
29	Organic chemicals <sup>(5)</sup>	33	40	18.8	85	95	12.5	327	362	10.7
71	Precious metals, jewellery, and coins	22	30	37.9	65	75	15.1	294	335	13.8
08	Fruit and nuts	29	25	-14.2	77	75	-2.6	321	332	3.4
89	Ships, boats, and floating structures	6	3	-48.4	46	13	-72.4	161	332	105.9
25	Salt, earths, stone, lime, and cement	25	29	13.5	57	63	11.6	207	324	56.6
64	Footwear	30	29	-3.4	89	91	2.7	296	312	5.4
70	Glass and glassware	33	23	-30.7	83	68	-17.6	314	310	-1.1
32	Tanning extracts, dyes, paints, and putty	28	29	5.7	70	73	4.5	292	302	3.7
76	Aluminium and aluminium articles <sup>(5)</sup>	22	26	18.5	66	67	2.3	268	287	6.9
20	Preparations of vegetables, fruit, and nuts	26	23	-12.1	68	64	-5.8	302	274	-9.1
18	Cocoa and cocoa preparations	19	21	7.7	49	59	22.6	244	261	7.1
34	Soap and organic surface-active agents <sup>(5)</sup>	21	24	12.4	57	64	12.1	234	253	7.9
15	Animal and vegetable fats and oils	24	19	-20.6	64	65	2.8	245	247	1.0
10	Cereals	18	29	56.8	48	61	25.8	220	218	-1.1
74	Copper and copper articles <sup>(5)</sup>	21	19	-10.7	49	52	4.8	174	207	19.4
82	Metal tools, implements, and cutlery	14	14	0.1	42	44	5.3	179	196	9.2
-	Other commodities <sup>(5)</sup>	222	260	17.2	580	669	15.4	2,591	2,788	7.6
9809	Confidential data <sup>(6)</sup>	19	31	...	48	82	...	192	322	...
<b>01-98</b>	<b>All merchandise imports</b>	<b>3,468</b>	<b>4,066</b>	<b>17.2</b>	<b>9,347</b>	<b>11,039</b>	<b>18.1</b>	<b>39,719</b>	<b>44,053</b>	<b>10.9</b>

1. Imports are valued cif (cost, including insurance and freight to New Zealand, in New Zealand dollars).

2. Figures are calculated on unrounded data.

3. These codes are used in Infoshare series IMPM.S2T&C (at position '&&'). Exceptions are:

2709-2715=IMPM.S2U27BC, 50-63=IMPM.S2O50TO63C, 72-73=IMPM.S2O72TO73F, 9809=IMPM.S2U98CC and 01-98=IMPM.S2TZCC.

4. For the latest month, values for crude oil and some other petroleum products are calculated from estimated prices.

5. Import values exclude confidential data. (This may affect percentage changes.)

6. Data that is no longer confidential is assigned to specific commodities.

HS – New Zealand Harmonised System Classification. (HS2007 applies to January 2007 and later data.)

**Symbols:**

P provisional (Statistics for the latest three months are provisional.)

- no code available

... not applicable

**Source:** Statistics New Zealand

Table 7

**Imports by broad economic category (BEC) group**<sup>(1)(2)(3)</sup>

	Capital goods <sup>(4)</sup>		Intermediate goods <sup>(5)</sup>			Consumption goods <sup>(7)</sup>	Other categories			All merchandise imports <sup>(10)</sup>	
	Machinery and plant	Transport equipment	Crude oil <sup>(6)</sup>	Other	Total		Passenger motor cars	Petrol and avgas <sup>(6)</sup>	Military and other goods <sup>(8)(9)</sup>		
BEC codes	41	521	313	111, 121, 2, 311, 312, 314, 322, 42, 53	111, 121, 2, 31, 322, 42, 53	112, 122, 522, 6	51	321	7	1-7	
Infoshare series BECM.	SIA410	SIA521	SID313	SIG990	SIG999	SIK999	SIL510	SIM321	SIN700	SIT999	
	\$(million)										
<b>Year ended</b>											
March 2007	5,845	2,253	2,975	15,431	18,406	10,178	3,011	1,191	195	41,079	
March 2008	6,598	1,760	3,408	15,630	19,039	10,392	3,258	1,230	374	42,650	
March 2009	7,316	1,680	4,196	19,463	23,659	11,396	2,463	1,314	202	48,029	
March 2010	5,660	1,586	3,430	14,593	18,024	10,774	2,227	1,206	239	39,715	
March 2011 P	6,125	1,797	4,276 E	15,913	20,190	11,159	2,823	1,333	620	44,047	
Latest annual change	<b>8.2%</b>	<b>13.3%</b>	<b>24.7%</b>	<b>9.0%</b>	<b>12.0%</b>	<b>3.6%</b>	<b>26.8%</b>	<b>10.5%</b>	<b>159.9%</b>	<b>10.9%</b>	
<b>Three months ended</b>											
March 2010	1,233	178	1,051	3,390	4,441	2,475	598	352	69	9,346	
June 2010	1,396	238	1,090	3,698	4,788	2,534	729	360	255	10,299	
September 2010	1,629	228	919	4,047	4,966	2,958	736	242	165	10,926	
December 2010	1,681	615	980	4,188	5,168	3,092	774	345	112	11,788	
March 2011 P	1,419	716	1,287 E	3,980	5,267	2,575	584	385	88	11,034	
Latest annual change	<b>15.1%</b>	<b>302.3%</b>	<b>22.4%</b>	<b>17.4%</b>	<b>18.6%</b>	<b>4.0%</b>	<b>-2.3%</b>	<b>9.6%</b>	<b>27.2%</b>	<b>18.1%</b>	
<b>Month</b>											
2009	Mar	555	53	194	1,609	1,803	962	121	111	8	3,612
	Apr	483	46	275	1,294	1,569	898	152	162	7	3,318
	May	531	82	179	1,168	1,347	861	141	82	12	3,056
	Jun	574	646	157	1,144	1,301	847	149	36	10	3,564
	Jul	456	120	351	1,253	1,604	893	162	91	23	3,350
	Aug	458	75	271	1,412	1,683	945	195	83	24	3,461
	Sep	463	170	231	1,279	1,511	988	153	77	21	3,384
	Oct	498	155	278	1,228	1,506	975	220	84	18	3,456
	Nov	491	51	235	1,220	1,455	969	232	129	15	3,341
	Dec	472	63	402	1,205	1,607	922	225	111	39	3,438
2010	Jan	384	69	374	990	1,364	744	178	117	30	2,886
	Feb	376	38	307	1,119	1,425	829	193	113	17	2,992
	Mar	473	70	371	1,281	1,652	903	227	122	21	3,468
	Apr	440	55	330	1,181	1,511	830	236	117	112	3,300
	May	457	116	368	1,232	1,601	855	254	119	26	3,427
	Jun	499	66	392	1,285	1,677	848	240	125	117	3,572
	Jul	503	70	401	1,446	1,847	932	227	128	32	3,739
	Aug	522	74	304	1,280	1,584	1,001	257	26	95	3,560
	Sep	603	84	214	1,321	1,535	1,026	251	87	39	3,626
	Oct	547	164	366	1,407	1,773	1,040	262	85	32	3,903
	Nov	571	90	235	1,425	1,660	1,092	259	135	33	3,839
	Dec	563	362	380	1,356	1,736	959	254	125	47	4,046
2011	Jan P	450	80	373	1,233	1,606	783	177	176	25	3,298
	Feb P	438	299	434	1,308	1,742	880	186	100	28	3,674
	Mar P	532	337	479 E	1,440	1,919	912	221	109	34	4,063
Latest annual change <sup>(11)</sup>		<b>12.4%</b>	<b>378.4%</b>	<b>29.1%</b>	<b>12.4%</b>	<b>16.1%</b>	<b>1.0%</b>	<b>-2.6%</b>	<b>-11.0%</b>	<b>61.7%</b>	<b>17.2%</b>

1. Imports are valued cif (cost, including insurance and freight to New Zealand, in New Zealand dollars).

2. Figures are calculated on unrounded data.

3. Some section values exclude confidential data. (This may affect percentage changes.)

4. Excludes passenger motor cars. (There is a separate series for these because industry and household purchases cannot be split.)

5. Excludes petrol and avgas. (There is a separate series for these because industry and household purchases cannot be split.)

6. For the latest month, values for crude oil and some other petroleum products are calculated from estimated prices.

7. Excludes passenger motor cars, petrol and avgas, and military equipment.

8. Military equipment (including frigates), confidential, miscellaneous, and unclassified goods. Military helicopters are in capital transport equipment.

9. Data that is no longer confidential is assigned to specific BEC groups.

10. Totals may not match merchandise trade totals as some commodities (eg monetary gold) are excluded from BEC.

11. The change from the same period of the previous year.

**Symbols:** E estimated P provisional (Statistics for the latest three months are provisional.)

**Source:** Statistics New Zealand

Table 8

## Exchange rates

	Reserve Bank exchange rates						NZCS exchange rates					
	Mid-rates for NZ\$1.00					Trade Weighted Index <sup>(1)</sup>	Change from		Trade Weighted Index <sup>(3)</sup>	Change from		
	USA NZ\$:US\$	UK NZ\$:£	Australia NZ\$:A\$	Japan NZ\$:yen	Europe NZ\$:euro		preceding	same period		preceding	same period	
							period (2)	of previous year <sup>(2)</sup>		period (2)	of previous year <sup>(2)</sup>	
						%	%	%	%			
<b>Three months ended</b>												
2008	Mar	0.7904	0.3995	0.8720	83.22	0.5274	71.9	1.3	4.5	1032	1.7	4.0
	Jun	0.7759	0.3937	0.8228	81.09	0.4964	69.2	-3.7	-3.9	1013	-1.9	-1.1
	Sep	0.7134	0.3767	0.8034	76.76	0.4740	65.5	-5.4	-8.1	954	-5.8	-8.4
	Dec	0.5786	0.3675	0.8576	55.88	0.4392	57.8	-11.8	-18.7	871	-8.7	-14.2
2009	Mar	0.5328	0.3710	0.8024	49.82	0.4083	53.7	-7.0	-25.4	800	-8.1	-22.5
	Jun	0.6024	0.3889	0.7938	58.66	0.4422	58.4	8.7	-15.7	836	4.5	-17.4
	Sep	0.6738	0.4106	0.8089	63.08	0.4712	62.6	7.2	-4.5	905	8.2	-5.1
	Dec	0.7285	0.4458	0.8010	65.33	0.4929	65.5	4.6	13.4	960	6.0	10.2
2010	Mar	0.7094	0.4542	0.7846	64.32	0.5121	65.3	-0.3	21.6	944	-1.6	18.0
	Jun	0.7015	0.4700	0.7936	64.61	0.5509	66.7	2.2	14.3	948	0.5	13.4
	Sep	0.7175	0.4630	0.7948	61.59	0.5560	66.9	0.2	6.8	963	1.6	6.4
	Dec	0.7577	0.4792	0.7675	62.58	0.5576	67.8	1.4	3.6	973	1.0	1.4
2011	Mar	0.7561	0.4719	0.7530	62.23	0.5535	67.2	-0.8	3.0	962	-1.1	1.9
<b>Month</b>												
2009	Mar	0.5308	0.3739	0.7979	51.85	0.4067	53.8	2.9	-24.8	775	-2.1	-26.0
	Apr	0.5709	0.3882	0.8006	56.42	0.4323	56.9	5.6	-19.1	824	6.3	-19.9
	May	0.5989	0.3891	0.7855	57.92	0.4394	58.0	1.9	-16.4	828	0.5	-18.3
	Jun	0.6374	0.3894	0.7953	61.63	0.4550	60.3	4.1	-11.4	857	3.4	-13.9
	Jul	0.6437	0.3932	0.8011	60.82	0.4573	60.6	0.5	-9.8	883	3.1	-9.2
	Aug	0.6754	0.4082	0.8089	64.14	0.4736	62.9	3.7	-4.1	904	2.4	-5.2
	Sep	0.7024	0.4304	0.8166	64.29	0.4827	64.3	2.3	0.8	928	2.6	-0.7
	Oct	0.7383	0.4566	0.8157	66.58	0.4986	66.5	3.4	9.5	958	3.3	5.4
	Nov	0.7309	0.4400	0.7943	65.26	0.4900	65.2	-2.0	13.6	969	1.1	9.8
	Dec	0.7162	0.4407	0.7929	64.15	0.4901	64.7	-0.8	17.4	952	-1.7	16.1
2010	Jan	0.7277	0.4500	0.7959	66.38	0.5092	66.1	2.2	20.5	952	-0.1	14.1
	Feb	0.6974	0.4455	0.7868	62.93	0.5094	64.6	-2.3	23.5	946	-0.6	19.5
	Mar	0.7032	0.4670	0.7712	63.66	0.5178	65.1	0.8	20.9	934	-1.2	20.6
	Apr	0.7124	0.4644	0.7685	66.52	0.5304	66.1	1.5	16.2	944	1.1	14.6
	May	0.6992	0.4761	0.8019	64.36	0.5557	67.0	1.4	15.6	956	1.3	15.5
	Jun	0.6928	0.4696	0.8105	62.96	0.5665	67.1	0.1	11.2	944	-1.3	10.2
	Jul	0.7111	0.4657	0.8134	62.31	0.5572	67.2	0.1	10.9	960	1.7	8.7
	Aug	0.7154	0.4566	0.7944	61.17	0.5541	66.6	-0.9	6.0	975	1.5	7.8
	Sep	0.7259	0.4667	0.7766	61.28	0.5566	66.8	0.3	3.9	954	-2.1	2.9
	Oct	0.7501	0.4734	0.7647	61.48	0.5404	66.7	-0.1	0.3	962	0.8	0.4
	Nov	0.7727	0.4836	0.7805	63.69	0.5646	68.9	3.3	5.7	977	1.5	0.8
	Dec	0.7504	0.4807	0.7573	62.57	0.5679	67.8	-1.6	4.8	979	0.2	2.8
2011	Jan	0.7653	0.4847	0.7692	63.29	0.5732	68.7	1.3	3.9	962	-1.7	1.1
	Feb	0.7623	0.4728	0.7565	62.98	0.5583	67.8	-1.3	5.0	977	1.6	3.3
	Mar	0.7408	0.4582	0.7333	60.41	0.5290	65.2	-3.8	0.2	947	-3.1	1.4

1. Base: June 1979 (=100). For further information, refer: <http://www.rbnz.govt.nz/news/1999/0085359.html>.

2. Figures are calculated on unrounded data.

3. Base: June 1997 (=1000). Calculated by Statistics New Zealand from exchange rates published by the NZCS.

NZCS – New Zealand Customs Service

Source: Reserve Bank of New Zealand

Table 9

**Related series****Livestock, cars, and crude oil**

	Exports-related series			Imports-related series				
	Livestock slaughtered for export <sup>(1)</sup>			Number of cars and station wagons newly registered <sup>(2)</sup>		Crude oil (HS code 2709)		
	Cattle	Lambs	Sheep			Quantity tonnes (000)	Price (cif) <sup>(3)(4)</sup> \$/tonne	Change from preceding period <sup>(5)</sup>
	Number (000)			Total	Used			
Infoshare series	LSSM. SAZNEC9	LSSM. SAZNES7	LSSM. SAZNES9	TPTM. S22IZ	TPTM. S22JZ	IMPM. SH1CW	BECM. SIX313	%
<b>Three months ended</b>								
2008 Mar	685	10,135	12,477	47,010	26,928	1,153	921.63	5.5
Jun	825	7,758	9,718	41,628	23,697	870	1,138.22	23.5
Sep	1,617	2,667	3,289	39,141	21,356	998	1,452.36	27.6
Dec	669	6,181	7,691	36,459	18,860	1,197	999.53	-31.2
2009 Mar	691	8,053	9,817	29,157	15,185	877	637.69	-36.2
Jun	843	6,037	6,452	27,186	15,376	933	654.38	2.6
Sep	1,567	2,201	2,533	32,436	17,953	1,067	799.46	22.2
Dec	590	5,122	6,447	34,382	20,243	1,136	805.64	0.8
2010 Mar	711 R	8,607 P	10,119 P	36,684	21,389	1,264	831.73	3.2
Jun	848 P	5,321 P	5,841 P	36,823	21,836	1,248	873.44	5.0
Sep	1,651 P	2,080 P	2,462 P	38,317	22,853	1,125	817.38	-6.4
Dec	659 P	4,684 P	6,286 P	38,818	22,535	1,182	829.16	1.4
2011 Mar	...	...	...	37,711	20,578	1,296 P	992.43 E	19.7
<b>Month</b>								
2009 Mar	254	2,301	2,599	10,015	5,134	284	683.26	-4.0
Apr	306	2,762	2,925	8,284	4,759	417	658.77	-3.6
May	315	2,072	2,187	9,190	5,211	284	630.84	-4.2
Jun	221	1,204	1,341	9,712	5,406	232	675.38	7.1
Jul	280	739	925	10,633	6,160	424	827.77	22.6
Aug	755	621	698	10,291	5,874	350	774.54	-6.4
Sep	532	841	910	11,512	5,919	294	788.30	1.8
Oct	263	1,210	1,332	11,724	6,044	372	748.91	-5.0
Nov	157	1,663	2,173	11,081	6,595	292	804.91	7.5
Dec	170	2,249	2,942	11,577	7,604	472	850.78	5.7
2010 Jan	217 P	2,541 P	3,289 P	12,429	6,828	446	837.81	-1.5
Feb	185 P	2,516 P	2,958 P	11,063	6,761	371	827.64	-1.2
Mar	309	3,550 P	3,873 P	13,192	7,800	447	829.07	0.2
Apr	318	2,708	2,941	11,638	7,053	380	867.99	4.7
May	312 P	1,579 P	1,737 P	11,997	7,381	381	966.48	11.3
Jun	219 P	1,034 P	1,163 P	13,188	7,402	487	804.90	-16.7
Jul	287 P	759 P	972 P	12,339	7,893	483	830.22	3.1
Aug	838 P	613 P	714 P	12,250	7,530	376	807.96	-2.7
Sep	526 P	707 P	775 P	13,728	7,430	266	807.35	-0.1
Oct	246 P	1,262 P	1,430 P	12,824	6,958	478	764.53	-5.3
Nov	194 P	1,626 P	2,184 P	13,680	7,811	284	826.81	8.1
Dec	219 P	1,796 P	2,672 P	12,314	7,766	420	904.37	9.4
2011 Jan	200 P	1,889 P	2,885 P	13,278	7,068	400 P	932.78 P	3.1
Feb	...	...	...	11,371	6,527	448 P	970.70 P	4.1
Mar	...	...	...	13,062	6,983	449 P	1,067.32 E	10.0

1. Sourced from Ministry of Agriculture and Forestry.

2. Sourced from New Zealand Transport Agency.

3. This price may fluctuate with changes in sources of supply and types of crude oil being imported. Prices are estimated for the latest month.

4. Imports are valued cif (cost, including insurance and freight to New Zealand).

5. Figures are calculated on unrounded data.

HS – New Zealand Harmonised System Classification. (HS2007 applies to January 2007 and later data. HS2002 is used for earlier data.)

**Symbols:**

E estimated P provisional (Statistics for the latest three months are provisional.) R revised ... not applicable

**Source:** Statistics New Zealand

Table 10

**Exports and imports by standard international trade classification (SITC)<sup>(1)(2)(3)</sup>**

SITC code (4)	Section	Month of March			Three months ended March			12 months ended March		
		2010	2011 P	%	2010	2011 P	%	2010	2011 P	%
		\$(million)		change	\$(million)		change	\$(million)		change
<b>Exports (fob)</b>										
0	Food and live animals	2,078	2,403	15.6	5,545	6,259	12.9	19,278	22,235	15.3
1	Beverages and tobacco	118	126	6.2	285	276	-3.1	1,247	1,339	7.3
2	Crude materials, (inedible, except fuels)	443	549	24.0	1,098	1,350	22.9	4,219	5,145	22.0
3	Mineral fuels, (lubricants and related materials) <sup>(5)</sup>	252	176	-29.9	574	601	4.6	2,184	2,094	-4.1
4	Animal and vegetable oils, (fats and waxes)	24	5	-78.0	50	45	-9.7	155	163	5.2
5	Chemicals and related products	163	201	23.4	447	509	13.9	1,930	1,978	2.5
6	Manufactured goods (classified chiefly by material)	359	389	8.6	916	1,017	11.1	3,622	4,214	16.3
7	Machinery and transport equipment	285	306	7.6	713	700	-1.8	3,360	3,476	3.5
8	Miscellaneous manufactured articles	175	167	-4.6	417	404	-3.1	1,734	1,778	2.5
9	Other <sup>(6)</sup>	180	207	15.0	508	543	6.9	1,825	2,259	23.8
T	Total: sections 0–9 <sup>(7)</sup>	4,076	4,529	11.1	10,552	11,704	10.9	39,556	44,682	13.0
M	Total manufactures: sections 5–8 <sup>(8)</sup>	981	1,063	8.4	2,492	2,631	5.6	10,647	11,447	7.5
<b>Imports (cif)</b>										
0	Food and live animals	316	366	15.9	818	993	21.4	3,513	3,900	11.0
1	Beverages and tobacco	44	47	6.3	113	112	-0.9	507	522	2.8
2	Crude materials, (inedible, except fuels)	98	73	-25.1	204	218	6.8	741	928	25.2
3	Mineral fuels, (lubricants and related materials) <sup>(5)</sup>	542	719	32.5	1,623	1,967	21.2	6,074	6,831	12.4
4	Animal and vegetable oils, (fats and waxes)	20	15	-25.1	53	54	2.5	206	205	-0.4
5	Chemicals and related products	445	431	-3.0	1,138	1,233	8.4	4,685	5,072	8.3
6	Manufactured goods (classified chiefly by material)	436	452	3.7	1,181	1,230	4.2	4,695	5,088	8.4
7	Machinery and transport equipment	1,063	1,416	33.3	2,794	3,665	31.2	13,276	14,970	12.8
8	Miscellaneous manufactured articles	481	506	5.2	1,361	1,465	7.7	5,759	6,124	6.3
9	Other <sup>(6)</sup>	23	37	60.5	63	97	54.0	258	406	57.2
T	Total: sections 0–9 <sup>(7)</sup>	3,468	4,063	17.2	9,346	11,034	18.1	39,715	44,047	10.9
M	Total manufactures: sections 5–8 <sup>(8)</sup>	2,425	2,806	15.7	6,473	7,594	17.3	28,415	31,255	10.0
<b>Balance (fob minus cif)</b>										
0	Food and live animals	1,762	2,036	...	4,727	5,265	...	15,765	18,335	...
1	Beverages and tobacco	74	79	...	172	164	...	740	817	...
2	Crude materials, (inedible, except fuels)	345	476	...	894	1,132	...	3,477	4,217	...
3	Mineral fuels, (lubricants and related materials) <sup>(5)</sup>	-291	-542	...	-1,048	-1,366	...	-3,890	-4,737	...
4	Animal and vegetable oils, (fats and waxes)	4	-9	...	-3	-9	...	-51	-42	...
5	Chemicals and related products	-282	-230	...	-691	-724	...	-2,754	-3,094	...
6	Manufactured goods (classified chiefly by material)	-78	-63	...	-265	-213	...	-1,072	-874	...
7	Machinery and transport equipment	-778	-1,110	...	-2,081	-2,965	...	-9,916	-11,494	...
8	Miscellaneous manufactured articles	-306	-339	...	-944	-1,061	...	-4,025	-4,346	...
9	Other <sup>(6)</sup>	157	170	...	445	446	...	1,567	1,854	...
T	Total: sections 0–9 <sup>(7)</sup>	608	466	...	1,206	670	...	-159	635	...
M	Total manufactures: sections 5–8 <sup>(8)</sup>	-1,444	-1,742	...	-3,981	-4,963	...	-17,767	-19,808	...

1. Exports are valued fob (free on board – the value of goods at New Zealand ports before export) and include re-exports, while imports are valued cif (cost, including insurance and freight to New Zealand). All values are in New Zealand dollars.

2. Figures are calculated on unrounded data.

3. Some section values exclude confidential data. All excluded confidential data is included in section 9 (other).

4. These codes are used in Infoshare series EXPM.SITC1& and IMPM.SITC1& (at position '&') for exports and imports data. No series for balance data.

5. For the latest month, values for crude oil and some other petroleum products are calculated from estimated prices.

6. Commodities and transactions not classified elsewhere in SITC.

7. Totals may not match merchandise trade totals as some commodities (eg monetary gold) are excluded from SITC.

8. Excluding food and fuel manufactures.

**Symbols:**

P provisional (Statistics for the latest three months are provisional.)

... not applicable

**Source:** Statistics New Zealand

Table 11

**Exports by top 10 HS categories<sup>(1)(2)</sup>**Values – seasonally adjusted<sup>(3)(4)</sup>

		Milk powder, butter, and cheese	Meat and edible offal	Logs, wood, and wood articles	Crude oil <sup>(5)</sup>	Mechanical machinery and equipment	Fruit	Fish, crustaceans, and molluscs	Aluminium and aluminium articles <sup>(5)</sup>	Wine	Electrical machinery and equipment	Total merchandise exports
HS codes		0401-0406	02	44	2709	84	0803-0814	03	76	22	85	01-98
Infoshare series		EXPM. SH4AFS	EXPM. SH1DFS	EXPM. SH44FS	EXPM. S2U27CF	EXPM. SH13FS	EXPM. SH8AFS	EXPM. SH03FS	EXPM. S2T76F	EXPM. SH21FS	EXPM. SH14FS	OTTM.SSEF
		\$(million)										
Month												
2009	Sep	577	392	209	216	122	121	105	89	80	77	3,113
	Oct	568	427	201	112	136	118	100	84	86	77	2,972
	Nov	628	394	193	184	123	118	94	73	81	75	3,202
	Dec	642	378	204	175	142	131	100	89	88	95	3,205
2010	Jan	847	421	242	204	142	138	92	95	90	88	3,711
	Feb	745	435	216	92	136	123	100	89	87	79	3,347
	Mar	836	434	241	228	145	138	99	98	97	79	3,511
	Apr	868	498	250	147	128	126	102	95	83	82	3,569
	May	802	452	242	230	151	118	114	104	93	88	3,727
	Jun	966	417	259	170	166	118	122	94	90	88	3,696
	Jul	945	375	239	173	139	138	115	100	87	92	3,710
	Aug	854	308	231	112	147	105	113	112	92	86	3,541
	Sep	911	359	227	171	134	114	112	106	87	84	3,594
	Oct	914	400	258	133	157	118	116	106	93	88	3,880
	Nov	832	431	259	176	143	113	112	97	98	86	3,600
	Dec	850	470	287	109	132	137	107	115	89	89	3,686
2011	Jan	925	447	259	178	135	135	119	93	79	73	3,924
	Feb	960	434	295	201	138	115	108	107	76	88	3,899
	Mar	1,043	478	297	172	142	109	111	107	102	89	3,829
Percentage change from previous month												
2009	Sep	-6.2	16.6	7.5	26.0	2.3	-12.7	12.3	9.6	2.1	2.3	-4.7
	Oct	-1.6	9.0	-3.9	-48.2	11.5	-2.9	-5.0	-5.6	7.6	-0.1	-4.5
	Nov	10.6	-7.8	-3.7	64.2	-9.6	-0.4	-6.2	-12.8	-5.8	-2.7	7.7
	Dec	2.1	-4.2	5.4	-5.0	15.8	11.0	7.4	21.4	9.1	26.3	0.1
2010	Jan	32.0	11.4	18.9	16.7	-0.2	5.6	-8.0	7.6	1.9	-6.9	15.8
	Feb	-12.0	3.5	-11.0	-54.8	-4.2	-10.9	8.4	-6.2	-3.2	-10.8	-9.8
	Mar	12.2	-0.3	11.5	147.3	6.5	12.0	-1.3	9.6	11.1	0.2	4.9
	Apr	3.8	14.7	3.8	-35.4	-11.2	-8.5	3.0	-2.8	-14.7	4.3	1.6
	May	-7.6	-9.3	-3.1	56.0	17.5	-6.0	12.3	8.8	12.9	7.3	4.4
	Jun	20.5	-7.7	7.0	-26.0	9.9	-0.5	7.0	-9.3	-4.1	-0.5	-0.8
	Jul	-2.2	-10.1	-7.7	1.9	-16.3	16.7	-5.7	6.3	-2.5	5.1	0.4
	Aug	-9.6	-17.8	-3.0	-35.2	5.9	-23.5	-2.0	12.3	5.2	-7.2	-4.6
	Sep	6.7	16.5	-1.8	52.4	-8.5	8.0	-0.9	-5.7	-5.9	-1.7	1.5
	Oct	0.3	11.4	13.6	-22.3	16.7	4.1	3.1	-0.4	7.7	4.9	8.0
	Nov	-8.9	7.9	0.5	32.1	-8.8	-4.6	-3.5	-7.8	5.7	-2.7	-7.2
	Dec	2.1	8.9	10.6	-37.7	-7.8	21.9	-4.5	18.7	-9.5	3.5	2.4
2011	Jan	8.8	-4.8	-9.9	62.3	2.2	-2.1	11.6	-19.8	-11.7	-17.6	6.5
	Feb	3.8	-2.9	14.2	13.4	2.0	-14.3	-9.2	15.7	-3.7	20.8	-0.6
	Mar	8.7	10.1	0.6	-14.8	3.3	-5.7	2.7	-0.3	35.0	0.5	-1.8

1. Exports are valued fob (free on board – the value of goods at New Zealand ports before export, in New Zealand dollars) and include re-exports.

2. Figures are calculated on unrounded data.

3. Seasonally adjusted values, particularly for the latest periods, are subject to revision each quarter.

4. Seasonally adjusted values exclude estimated seasonal fluctuations, but include short-term irregular movements.

5. This series is not seasonally adjusted. This is because it does not have stable seasonality. Statistics for the latest three months are provisional.

HS – New Zealand Harmonised System Classification. (HS2007 applies to January 2007 and later data.)

Table 12

**Exports by top 10 HS categories**Quantities – seasonally adjusted<sup>(1)(2)</sup>

		Milk powder, butter, and cheese	Meat and edible offal	Logs and wood <sup>(3)(4)</sup>	Crude oil <sup>(4)</sup>	Mechanical machinery and equipment	Fruit	Fish, crustaceans, and molluscs <sup>(3)</sup>	Aluminium and aluminium articles <sup>(4)</sup>	Wine <sup>(4)</sup>	Electrical machinery and equipment <sup>(5)</sup>	Total merchandise exports <sup>(5)</sup>
HS codes		0401-0406	02	4403, 4406-4408, 4410-4411, 4413	2709	84	0803-0814	03 (excluding 030710)	76	2204	85	01-98
Infoshare series EXPM.		SH4AQS	SH1DQS	SH44Q	SH23Q		SH8AQS	SH03QS	SH12Q	SH21Q		
		tonnes (000)	tonnes (000)	cu. metres (000)	tonnes (000)	(5)	tonnes (000)	tonnes (000)	tonnes (000)	Litres (million)	(5)	(5)
Month												
2009	Sep	186	63	1,178	276	...	54	24	28	12	...	...
	Oct	182	72	1,034	153	...	49	24	27	15	...	...
	Nov	192	69	975	238	...	56	22	25	11	...	...
	Dec	181	63	945	191	...	62	23	31	11	...	...
2010	Jan	202	70	869	246	...	57	18	30	8	...	...
	Feb	170	71	870	112	...	49	21	26	10	...	...
	Mar	183	70	1,091	280	...	54	21	30	16	...	...
	Apr	182	75	1,259	168	...	54	20	28	12	...	...
	May	166	71	1,218	263	...	56	21	30	12	...	...
	Jun	188	64	1,040	207	...	53	23	30	11	...	...
	Jul	179	60	1,182	210	...	64	23	32	11	...	...
	Aug	168	52	1,132	142	...	52	23	37	14	...	...
	Sep	179	58	1,136	212	...	56	24	34	16	...	...
	Oct	193	63	1,293	162	...	52	24	33	19	...	...
	Nov	185	66	1,231	212	...	49	24	30	14	...	...
	Dec	189	68	1,353	126	...	50	25	35	13	...	...
2011	Jan	190	65	856	193	...	56	26	29	7	...	...
	Feb	212	61	1,292	206	...	54	22	33	9	...	...
	Mar	215	63	1,549	158	...	51	21	30	13	...	...
Percentage change from previous period												
2009	Sep	-2.0	14.5	16.4	34.2	...	-6.7	31.2	1.8	11.1	...	...
	Oct	-2.2	13.4	-12.2	-44.7	...	-9.2	-1.3	-2.1	18.9	...	...
	Nov	5.4	-3.9	-5.7	55.9	...	14.0	-6.7	-8.3	-24.9	...	...
	Dec	-5.7	-9.2	-3.0	-19.7	...	9.6	5.2	21.9	1.7	...	...
2010	Jan	11.6	11.3	-8.0	28.8	...	-7.2	-19.9	-2.8	-29.2	...	...
	Feb	-15.8	2.3	0.1	-54.5	...	-13.6	12.9	-11.6	29.6	...	...
	Mar	7.8	-1.4	25.3	149.4	...	8.4	1.4	13.6	55.6	...	...
	Apr	-0.4	6.1	15.4	-40.0	...	0.1	-5.3	-5.0	-26.1	...	...
	May	-8.7	-4.6	-3.2	56.4	...	3.7	5.1	5.6	-1.6	...	...
	Jun	12.9	-9.5	-14.7	-21.0	...	-5.6	7.7	1.1	-9.5	...	...
	Jul	-4.7	-7.1	13.7	1.0	...	21.3	2.3	4.5	6.4	...	...
	Aug	-6.2	-13.8	-4.2	-32.4	...	-19.1	0.1	16.0	25.1	...	...
	Sep	6.3	13.1	0.3	49.4	...	7.6	4.3	-8.5	15.1	...	...
	Oct	7.8	8.6	13.8	-23.2	...	-7.1	-2.3	-1.4	13.9	...	...
	Nov	-3.7	3.3	-4.8	30.3	...	-5.0	0.6	-9.7	-22.1	...	...
	Dec	1.7	4.3	9.9	-40.6	...	1.3	3.1	17.3	-7.6	...	...
2011	Jan	0.7	-5.2	-36.8	53.4	...	13.2	4.0	-17.1	-44.6	...	...
	Feb	11.9	-6.0	51.0	6.8	...	-4.6	-14.1	11.9	26.0	...	...
	Mar	1.0	3.3	19.8	-23.1	...	-5.6	-2.5	-7.9	43.4	...	...

1. Seasonally adjusted quantities exclude estimated seasonal fluctuations, but include short-term irregular movements.

2. Seasonally adjusted quantities particularly for the latest periods, are subject to revision each quarter. Re-exports are included.

3. This quantity series is not directly comparable to the equivalent value series in table 11. See 'HS codes' in the tables for differences.

4. This series is not seasonally adjusted. This is because it does not have stable seasonality. Statistics for the latest three months are provisional.

5. There is no single, consistent, unit of quantity available for this category.

HS – New Zealand Harmonised System Classification. (HS2007 applies to January 2007 and later data.)

Symbol: ... not applicable

Source: Statistics New Zealand

Table 13

**Imports by selected HS categories<sup>(1)(2)</sup>**Values – seasonally adjusted<sup>(3)(4)</sup>

		Petroleum and products <sup>(5)</sup>	Mechanical machinery and equipment <sup>(5)</sup>	Electrical machinery and equipment	Textiles and textile articles <sup>(5)</sup>	Plastic and plastic articles	Optical, medical, and measuring equipment	All merchandise imports excluding petroleum and products	Total merchandise imports
HS codes		2709-2715	84	85	50-63	39	90	...	01-98
Infoshare series		IMP.M. S2U27BC	IMP.M. S2T84C	IMP.M. S2T85CS	IMP.M. S2O50TO63C	IMP.M. S2T39CS	IMP.M. S2T90CS	OTTM.SSIC99	OTTM.SSIC
		\$(million)							
<b>Month</b>									
2009	Sep	467	368	322	165	121	104	2,664	3,194
	Oct	454	402	287	149	116	99	2,623	3,073
	Nov	487	395	275	150	121	107	2,650	3,198
	Dec	649	387	296	142	129	101	2,676	3,212
2010	Jan	581	345	258	152	123	101	2,693	3,362
	Feb	495	334	280	179	136	106	2,828	3,347
	Mar	539	433	275	164	141	109	2,952	3,472
	Apr	492	398	294	163	142	107	2,955	3,426
	May	574	407	285	150	141	114	3,024	3,634
	Jun	661	433	312	152	143	112	2,992	3,603
	Jul	683	456	308	169	133	105	3,023	3,623
	Aug	368	461	326	182	133	106	3,026	3,428
	Sep	357	509	311	187	130	115	3,031	3,438
	Oct	561	464	320	175	129	110	3,066	3,665
	Nov	441	473	321	175	133	114	2,972	3,488
	Dec	698	481	318	155	132	127	3,273	3,868
2011	Jan	582	450	357	169	148	113	3,219	3,823
	Feb	662	392	308	203	144	122	3,382	4,078
	Mar	712	466	322	165	144	119	3,317	3,987
		Percentage change from previous month							
2009	Sep	-8.8	-20.2	7.6	2.4	-0.8	-10.1	-9.2	-7.4
	Oct	-2.8	9.2	-10.7	-9.9	-4.7	-5.1	-1.5	-3.8
	Nov	7.1	-1.7	-4.3	1.0	4.4	8.1	1.0	4.1
	Dec	33.5	-2.0	7.6	-5.6	7.3	-4.9	1.0	0.4
2010	Jan	-10.5	-10.7	-12.7	7.4	-4.7	-0.3	0.7	4.7
	Feb	-14.8	-3.2	8.6	17.5	10.0	4.4	5.0	-0.4
	Mar	8.8	29.5	-1.9	-8.3	3.8	3.0	4.4	3.7
	Apr	-8.7	-8.1	6.7	-0.4	0.6	-1.5	0.1	-1.3
	May	16.8	2.2	-3.1	-8.3	-0.3	6.3	2.3	6.1
	Jun	15.2	6.4	9.7	1.4	1.5	-1.8	-1.1	-0.9
	Jul	3.2	5.4	-1.4	11.4	-7.2	-6.2	1.1	0.6
	Aug	-46.1	1.0	5.7	7.4	-0.2	1.3	0.1	-5.4
	Sep	-3.2	10.4	-4.6	2.7	-2.1	8.6	0.2	0.3
	Oct	57.4	-8.8	2.8	-6.1	-0.8	-4.5	1.1	6.6
	Nov	-21.4	2.0	0.4	0.1	3.0	3.2	-3.1	-4.8
	Dec	58.2	1.7	-0.8	-11.8	-0.7	11.5	10.1	10.9
2011	Jan	-16.6	-6.5	12.2	9.5	12.0	-10.7	-1.7	-1.2
	Feb	13.7	-13.0	-13.8	19.6	-2.3	8.0	5.1	6.7
	Mar	7.6	18.9	4.5	-18.4	0.1	-2.5	-1.9	-2.2

1. Imports are valued cif (cost, including insurance and freight to New Zealand). All values are in New Zealand dollars.

2. Figures are calculated on unrounded data.

3. Seasonally adjusted values, particularly for the latest periods, are subject to revision each quarter.

4. Seasonally adjusted values exclude estimated seasonal fluctuations, but include short-term irregular movements.

5. This series is not seasonally adjusted. This is because it does not have stable seasonality. Statistics for the latest three months are provisional.

HS – New Zealand Harmonised System Classification. (HS2007 applies to January 2007 and later data.)

**Symbol:**

... not applicable

**Source:** Statistics New Zealand

Table 14

**Exports by top 10 HS categories<sup>(1)(2)</sup>**Values – trend<sup>(3)(4)</sup>

		Milk powder, butter, and cheese	Meat and edible offal	Logs, wood, and wood articles	Crude oil <sup>(5)</sup>	Mechanical machinery and equipment	Fruit	Fish, crustaceans, and molluscs	Aluminium and aluminium articles <sup>(5)</sup>	Wine	Electrical machinery and equipment	Total merchandise exports
HS codes		0401-0406	02	44	2709	84	0803-0814	03	76	22	85	01-98
Infoshare series		EXPM. SH4AFT	EXPM. SH1DFT	EXPM. SH44FT	EXPM. S2U27CF	EXPM. SH13FT	EXPM. SH8AFT	EXPM. SH03FT	EXPM. S2T76F	EXPM. SH21FT	EXPM. SH14FT	OTTM.STEF
		\$(million)										
Month												
2009	Sep	608	402	200	216	131	123	99	89	85	77	3,130
	Oct	601	400	205	112	131	123	98	84	85	77	3,126
	Nov	617	401	210	184	132	125	97	73	86	77	3,151
	Dec	654	406	216	175	134	127	96	89	86	78	3,211
2010	Jan	703	415	222	204	136	129	96	95	87	79	3,297
	Feb	757	425	227	92	139	130	98	89	88	80	3,404
	Mar	807	433	232	228	141	130	102	98	89	82	3,509
	Apr	849	434	236	147	143	128	106	95	90	84	3,586
	May	881	426	239	230	145	125	111	104	90	86	3,638
	Jun	903	411	242	170	145	121	114	94	91	87	3,667
	Jul	910	397	244	173	145	118	116	100	91	88	3,671
	Aug	905	390	248	112	144	117	116	112	90	88	3,664
	Sep	891	393	251	171	144	117	114	106	90	87	3,664
	Oct	880	405	256	133	143	119	113	106	89	87	3,683
	Nov	879	422	262	176	142	122	112	97	88	87	3,722
	Dec	895	438	268	109	141	123	112	115	87	87	3,771
2011	Jan	920	450	274	178	140	124	112	93	86	88	3,815
	Feb	951	460	280	201	139	123	111	107	85	88	3,846
	Mar	979	469	286	172	138	120	111	107	85	89	3,867
Percentage change from previous month												
2009	Sep	-3.3	-1.3	1.9	26.0	-1.1	-0.9	-0.8	9.6	0.3	-0.3	-1.1
	Oct	-1.1	-0.6	2.3	-48.2	-0.1	0.5	-0.8	-5.6	0.5	0.5	-0.2
	Nov	2.7	0.4	2.7	64.2	0.7	1.5	-1.1	-12.8	0.7	0.7	0.8
	Dec	5.9	1.3	2.8	-5.0	1.3	1.8	-1.0	21.4	0.9	0.8	1.9
2010	Jan	7.4	2.2	2.7	16.7	1.8	1.2	0.1	7.6	1.0	0.9	2.7
	Feb	7.7	2.4	2.4	-54.8	1.9	0.8	1.9	-6.2	1.0	1.5	3.2
	Mar	6.6	1.8	2.1	147.3	1.8	-0.2	3.6	9.6	1.0	2.2	3.1
	Apr	5.2	0.2	1.7	-35.4	1.5	-1.6	4.5	-2.8	0.9	2.5	2.2
	May	3.8	-1.8	1.3	56.0	0.9	-2.2	4.1	8.8	0.7	2.4	1.4
	Jun	2.4	-3.5	1.1	-26.0	0.4	-2.6	3.0	-9.3	0.3	1.7	0.8
	Jul	0.8	-3.5	1.1	1.9	-0.1	-2.5	1.4	6.3	-0.1	0.9	0.1
	Aug	-0.6	-1.7	1.3	-35.2	-0.4	-1.4	-0.2	12.3	-0.4	-0.1	-0.2
	Sep	-1.5	0.7	1.5	52.4	-0.6	0.4	-1.0	-5.7	-0.6	-0.7	0
	Oct	-1.3	3.0	1.9	-22.3	-0.7	1.8	-1.2	-0.4	-0.8	-0.6	0.5
	Nov	-0.1	4.2	2.2	32.1	-0.6	1.9	-0.7	-7.8	-0.9	0	1.1
	Dec	1.8	3.8	2.3	-37.7	-0.7	1.3	-0.3	18.7	-1.1	0.4	1.3
2011	Jan	2.9	2.9	2.4	62.3	-0.6	0.2	-0.3	-19.8	-1.2	0.5	1.1
	Feb	3.3	2.1	2.1	13.4	-0.7	-0.8	-0.3	15.7	-1.4	0.6	0.8
	Mar	2.9	1.9	2.2	-14.8	-0.6	-2.2	-0.3	-0.3	-0.7	0.4	0.5

1. Exports are valued fob (free on board – the value of goods at New Zealand ports before export, in New Zealand dollars) and include re-exports.

2. Figures are calculated on unrounded data.

3. Values, particularly for the latest periods, are subject to revision each month.

4. Trend values exclude estimated seasonal fluctuations and short-term irregular movements.

5. Trend estimates are not calculated for this series because it does not have stable seasonality. Statistics for the latest three months are provisional.

HS – New Zealand Harmonised System Classification. (HS2007 applies to January 2007 and later data.)

Source: Statistics New Zealand

Table 15

## Exports by top 10 HS categories

Quantities – trend<sup>(1)(2)</sup>

		Milk powder, butter, and cheese	Meat and edible offal	Logs and wood <sup>(3)</sup>	Crude oil <sup>(4)</sup>	Mechanical machinery and equipment	Fruit	Fish, crustaceans, and molluscs <sup>(3)</sup>	Aluminium and aluminium articles <sup>(4)</sup>	Wine	Electrical machinery and equipment	Total merchandise exports
HS codes		0401-0406	02	4403, 4406-4408, 4410-4411, 4413	2709	84	0803-0814	03 (excluding 030710)	76	2204	85	01-98
Infoshare series EXPM		SH4AQT	SH1DQT	SH44QT	SH23Q		SH8AQT	SH03QT	SH12Q	SH21QT		
		tonnes (000)	tonnes (000)	cu. metres (000)	tonnes (000)	(5)	tonnes (000)	tonnes (000)	tonnes (000)	Litres (mill)	(5)	(5)
Month												
2009	Sep	192	68	1,015	276	...	54	23	28	11	...	...
	Oct	189	69	1,024	153	...	55	23	27	11	...	...
	Nov	187	69	1,029	238	...	56	23	25	11	...	...
	Dec	186	70	1,031	191	...	56	22	31	11	...	...
2010	Jan	184	70	1,032	246	...	55	21	30	11	...	...
	Feb	183	70	1,032	112	...	55	21	26	12	...	...
	Mar	181	69	1,034	280	...	54	21	30	12	...	...
	Apr	179	69	1,039	168	...	54	21	28	12	...	...
	May	177	68	1,050	263	...	55	21	30	12	...	...
	Jun	176	67	1,068	207	...	56	22	30	13	...	...
	Jul	177	66	1,096	210	...	56	23	32	13	...	...
	Aug	178	65	1,133	142	...	55	23	37	13	...	...
	Sep	180	64	1,175	212	...	54	24	34	13	...	...
	Oct	183	64	1,223	162	...	53	24	33	13	...	...
	Nov	187	64	1,275	212	...	52	24	30	13	...	...
	Dec	192	63	1,327	126	...	52	24	35	13	...	...
2011	Jan	198	63	1,379	193	...	52	24	29	13	...	...
	Feb	204	63	1,429	206	...	52	23	33	13	...	...
	Mar	209	63	1,475	158	...	52	23	30	13	...	...
Percentage change from previous period												
2009	Sep	-1.8	0.4	1.4	34.2	...	0.8	2.2	1.8	1.1	...	...
	Oct	-1.8	0.7	0.9	-44.7	...	1.5	0.8	-2.1	0.7	...	...
	Nov	-1.1	0.8	0.5	55.9	...	1.0	-0.8	-8.3	0.5	...	...
	Dec	-0.6	0.7	0.2	-19.7	...	0.2	-2.3	21.9	0.4	...	...
2010	Jan	-0.6	0.4	0.1	28.8	...	-1.0	-3.1	-2.8	0.6	...	...
	Feb	-0.7	-0.1	0.1	-54.5	...	-1.1	-2.4	-11.6	1.0	...	...
	Mar	-1.1	-0.6	0.2	149.4	...	-0.7	-0.9	13.6	1.6	...	...
	Apr	-1.2	-1.0	0.5	-40.0	...	0.1	1.0	-5.0	2.1	...	...
	May	-0.9	-1.3	1.0	56.4	...	1.2	2.4	5.6	2.4	...	...
	Jun	-0.3	-1.5	1.8	-21.0	...	1.6	3.1	1.1	2.5	...	...
	Jul	0.3	-1.5	2.6	1.0	...	0.3	3.0	4.5	2.3	...	...
	Aug	0.7	-1.3	3.3	-32.4	...	-1.5	2.6	16.0	1.9	...	...
	Sep	0.9	-1.0	3.7	49.4	...	-2.4	2.2	-8.5	1.5	...	...
	Oct	1.7	-0.7	4.1	-23.2	...	-2.2	1.2	-1.4	0.9	...	...
	Nov	2.3	-0.5	4.2	30.3	...	-1.3	0.1	-9.7	0.5	...	...
	Dec	2.9	-0.3	4.1	-40.6	...	-0.3	-0.8	17.3	0.1	...	...
2011	Jan	3.0	-0.3	3.9	53.4	...	0.5	-1.5	-17.1	-0.3	...	...
	Feb	2.9	-0.3	3.6	6.8	...	0.7	-2.0	11.9	-0.4	...	...
	Mar	2.3	-0.4	3.2	-23.1	...	0	-2.4	-7.9	-0.3	...	...

1. Values, particularly for the latest periods, are subject to revision each month.

2. Trend values exclude estimated seasonal fluctuations and short-term irregular movements.

3. This quantity series is not directly comparable to the equivalent value series in table 14. See 'HS codes' in the tables for differences.

4. Trend estimates are not calculated for this series because it does not have stable seasonality. Statistics for the latest three months are provisional.

5. There is no single, consistent, unit of quantity available for this category.

HS – New Zealand Harmonised System Classification. (HS2007 applies to January 2007 and later data.)

**Symbol:**

... not applicable

**Source:** Statistics New Zealand

Table 16

**Imports by selected HS categories<sup>(1)(2)</sup>**Values – trend<sup>(3)(4)</sup>

		Petroleum and products <sup>(5)</sup>	Mechanical machinery and equipment	Electrical machinery and equipment	Textiles and textile articles	Plastic and plastic articles	Optical, medical, and measuring equipment	All merchandise imports excluding petroleum and products <sup>(6)</sup>	Total merchandise imports <sup>(6)</sup>
HS codes		2709-2715	84	85	50-63	39	90	..	01-98
Infoshare series		IMPM. S2U27BC	IMPM. S2T84CT	IMPM. S2T85CT	IMPM. S2O50TO63T	IMPM. S2T39CT	IMPM. S2T90CT	OTTM.STIC99	OTTM.STIC
		\$(million)							
<b>Month</b>									
2009	Sep	467	388	303	153	120	108	2,656	3,145
	Oct	454	382	292	152	120	106	2,642	3,157
	Nov	487	379	284	152	122	105	2,650	3,189
	Dec	649	381	278	153	125	104	2,687	3,237
2010	Jan	581	385	275	155	129	104	2,747	3,301
	Feb	495	393	276	157	134	105	2,821	3,376
	Mar	539	403	280	160	138	106	2,894	3,453
	Apr	492	414	287	163	141	107	2,954	3,512
	May	574	425	295	166	141	108	2,995	3,547
	Jun	661	435	304	168	139	109	3,018	3,559
	Jul	683	443	310	170	136	110	3,025	3,550
	Aug	368	449	315	171	133	111	3,024	3,531
	Sep	357	453	319	172	131	112	3,028	3,525
	Oct	561	456	321	172	131	114	3,039	3,546
	Nov	441	457	323	173	133	115	3,058	3,598
	Dec	698	459	325	172	137	116	3,082	3,670
2011	Jan	582	460	325	172	140	118	3,106	3,740
	Feb	662	461	325	172	143	119	3,125	3,791
	Mar	712	461	325	171	146	120	3,137	3,817
<b>Percentage change from previous month</b>									
2009	Sep	-8.8	-2.3	-3.7	-1.2	-0.2	-2.3	-1.1	-0.4
	Oct	-2.8	-1.5	-3.4	-0.6	0.5	-1.8	-0.5	0.4
	Nov	7.1	-0.6	-2.9	0	1.4	-1.1	0.3	1.0
	Dec	33.5	0.3	-2.0	0.6	2.5	-0.5	1.4	1.5
2010	Jan	-10.5	1.2	-1.1	1.1	3.5	0	2.3	2.0
	Feb	-14.8	2.0	0.1	1.5	3.7	0.4	2.7	2.3
	Mar	8.8	2.5	1.5	1.7	3.0	0.7	2.6	2.3
	Apr	-8.7	2.7	2.6	1.8	1.7	0.9	2.1	1.7
	May	16.8	2.7	2.9	1.7	0.1	1.0	1.4	1.0
	Jun	15.2	2.4	2.9	1.5	-1.2	1.2	0.8	0.3
	Jul	3.2	1.9	2.1	1.1	-2.2	1.1	0.2	-0.3
	Aug	-46.1	1.3	1.5	0.8	-2.4	1.0	0	-0.5
	Sep	-3.2	0.9	1.2	0.4	-1.4	1.1	0.1	-0.2
	Oct	57.4	0.6	0.8	0.2	0.2	1.2	0.4	0.6
	Nov	-21.4	0.4	0.6	0	1.7	1.2	0.6	1.5
	Dec	58.2	0.4	0.4	0	2.5	1.2	0.8	2.0
2011	Jan	-16.6	0.2	0.2	-0.1	2.5	1.1	0.8	1.9
	Feb	13.7	0.2	0	-0.2	2.1	1.1	0.6	1.3
	Mar	7.6	0	0	-0.3	1.8	1.1	0.4	0.7

1. Imports are valued cif (cost, including insurance and freight to New Zealand). All values are in New Zealand dollars.

2. Figures are calculated on unrounded data.

3. Values, particularly for the latest periods, are subject to revision each month.

4. Trend values exclude estimated seasonal fluctuations and short-term irregular movements.

5. Trend estimates are not calculated for this series because it does not have stable seasonality. Statistics for the latest three months are provisional.

6. Excludes individual import items with (cif) values of \$100 million or more (such as large aircraft and ships).

HS – New Zealand Harmonised System Classification. (HS2007 applies to January 2007 and later data.)

**Symbol:** .. figure not available**Source:** Statistics New Zealand

Table 17

**Overseas merchandise trade**Seasonally adjusted and trend values – quarterly<sup>(1)(2)(3)</sup>

Infoshare series	Seasonally adjusted <sup>(4)</sup>					Trend <sup>(5)</sup>				
	Exports (including re-exports) (fob)	Change from previous quarter	Imports (cif)	Change from previous quarter	Trade balance (exports minus imports)	Exports (including re-exports) (fob)	Change from previous quarter	Imports (cif) <sup>(6)</sup>	Change from previous quarter	Trade balance (exports minus imports) <sup>(6)</sup>
	EXPQ.SH99FS		IMPQ.SOX1SCS			EXPQ.SH99FT		IMPQ.SOX1SCT		
	\$(million)	%	\$(million)	%	\$(million)	\$(million)	%	\$(million)	%	\$(million)
<b>Three months ended</b>										
2003 Mar	7,240	-2.8	7,867	-3.5	-627	7,199	-3.3	7,930	-2.3	-731
Jun	6,960	-3.9	7,905	0.5	-944	7,038	-2.2	7,882	-0.6	-844
Sep	7,107	2.1	7,964	0.8	-858	7,036	0	7,943	0.8	-908
Dec	7,124	0.2	8,056	1.2	-932	7,181	2.1	8,118	2.2	-938
2004 Mar	7,427	4.2	8,479	5.2	-1,052	7,411	3.2	8,446	4.0	-1,035
Jun	8,102	9.1	8,933	5.4	-831	7,629	2.9	8,625	2.1	-996
Sep	7,343	-9.4	8,672	-2.9	-1,329	7,727	1.3	8,656	0.4	-929
Dec	7,804	6.3	8,840	1.9	-1,036	7,785	0.7	8,797	1.6	-1,013
2005 Mar	7,780	-0.3	9,034	2.2	-1,254	7,774	-0.1	9,060	3.0	-1,287
Jun	7,657	-1.6	9,287	2.8	-1,630	7,641	-1.7	9,282	2.4	-1,641
Sep	7,560	-1.3	9,376	1.0	-1,816	7,616	-0.3	9,297	0.2	-1,682
Dec	7,825	3.5	9,563	2.0	-1,738	7,742	1.7	9,254	-0.5	-1,512
2006 Mar	8,030	2.6	9,948	4.0	-1,917	8,175	5.6	9,516	2.8	-1,341
Jun	8,892	10.7	10,216	2.7	-1,324	8,820	7.9	9,944	4.5	-1,124
Sep	9,161	3.0	10,339	1.2	-1,178	9,026	2.3	10,053	1.1	-1,027
Dec	8,565	-6.5	10,161	-1.7	-1,596	8,747	-3.1	10,038	-0.1	-1,291
2007 Mar	8,666	1.2	10,360	2.0	-1,694	8,552	-2.2	10,030	-0.1	-1,479
Jun	8,553	-1.3	10,336	-0.2	-1,783	8,588	0.4	9,958	-0.7	-1,370
Sep	8,875	3.8	10,046	-2.8	-1,171	8,972	4.5	10,172	2.1	-1,200
Dec	10,521	18.5	11,056	10.0	-535	9,691	8.0	10,750	5.7	-1,059
2008 Mar	10,176	-3.3	11,231	1.6	-1,055	10,138	4.6	11,314	5.2	-1,176
Jun	10,321	1.4	12,302	9.5	-1,980	10,456	3.1	11,856	4.8	-1,401
Sep	11,069	7.2	12,441	1.1	-1,372	11,056	5.7	12,287	3.6	-1,231
Dec	11,422	3.2	12,410	-0.2	-988	11,251	1.8	11,895	-3.2	-644
2009 Mar	10,569	-7.5	10,715	-13.7	-146	10,697	-4.9	10,767	-9.5	-70
Jun	10,028	-5.1	10,338	-3.5	-310	9,992	-6.6	9,880	-8.2	112
Sep	9,571	-4.6	9,705	-6.1	-134	9,540	-4.5	9,570	-3.1	-30
Dec	9,468	-1.1	9,549	-1.6	-81	9,619	0.8	9,673	1.1	-54
2010 Mar	10,419	10.0	10,170	6.5	249	10,363	7.7	10,177	5.2	186
Jun	11,071	6.3	10,755	5.8	316	10,918	5.3	10,565	3.8	353
Sep	10,832	-2.2	10,397	-3.3	435	10,987	0.6	10,546	-0.2	441
Dec	11,196	3.4	11,004	5.8	192	11,172	1.7	10,832	2.7	340
2011 Mar	11,550	3.2	11,978	8.9	-428	11,552	3.4	11,465	5.8	87

1. Exports are valued fob (free on board – the value of goods at New Zealand ports before export) and include re-exports, while imports are valued cif (cost, including insurance and freight to New Zealand). All values are in New Zealand dollars.

2. Figures are calculated on unrounded data.

3. Values, particularly for the latest periods, are subject to revision each month.

4. Seasonally adjusted values exclude estimated seasonal fluctuations.

5. Trend values exclude estimated seasonal fluctuations and short-term irregular movements.

6. Excludes individual import items with (cif) values of \$100 million or more (such as large aircraft and ships).

Source: Statistics New Zealand

Table 18

**Exports by top 10 HS categories<sup>(1)(2)</sup>**Values – seasonally adjusted<sup>(3)(4)</sup> – quarterly

		Milk powder, butter, and cheese	Meat and edible offal	Logs, wood, and wood articles	Crude oil <sup>(5)</sup>	Mechanical machinery and equipment	Fruit	Fish, crustaceans, and molluscs	Aluminium and aluminium articles <sup>(5)</sup>	Wine	Electrical machinery and equipment	Total merchandise exports
HS codes		0401-0406	02	44	2709	84	0803-0814	03	76	22	85	01-98
Infoshare series EXPQ		SH4AFS	SH1DFS	SH44FS	S2U27CF	SH13FS	SH8AFS	SH03FS	S2T76F	SH21FS	SH14FS	SH99FS
Derived from: EXPQ.		S2U04AF	S2T02F	S2T44F		S2T84F	S2U08AF	S2T03F		S2U22AF	S2T85F	
\$(million)												
<b>Three months ended</b>												
2007	Mar	1,628	1,115	549	98	456	281	287	384	190	270	8,666
	Jun	1,679	1,037	537	202	463	311	265	395	185	276	8,553
	Sep	1,691	1,081	514	339	492	318	277	376	195	253	8,875
	Dec	2,384	1,126	493	725	479	439	275	362	188	253	10,521
2008	Mar	2,389	1,165	512	574	462	310	281	332	198	254	10,176
	Jun	2,078	1,262	480	903	467	351	293	389	216	263	10,321
	Sep	2,239	1,390	562	820	467	387	307	365	232	279	11,069
	Dec	2,461	1,409	627	473	484	399	335	342	249	276	11,422
2009	Mar	2,125	1,391	544	254	464	429	356	197	246	265	10,569
	Jun	2,108	1,339	591	416	422	408	306	198	263	244	10,028
	Sep	1,935	1,146	598	585	384	384	307	243	247	233	9,571
	Dec	1,853	1,189	581	471	399	370	296	245	257	243	9,468
2010	Mar	2,347	1,266	699	524	421	394	292	283	273	247	10,419
	Jun	2,683	1,389	766	547	444	361	335	293	266	258	11,071
	Sep	2,738	1,054	701	456	427	367	342	318	266	264	10,832
	Dec	2,615	1,323	780	418	429	368	336	318	283	259	11,196
2011	Mar	2,833	1,335	864	551	415	339	335	306	259	257	11,550
<b>Percentage change from previous period</b>												
2007	Mar	10.7	-9.0	-1.8	22.5	-1.1	3.4	-3.0	-1.5	20.6	-1.8	1.2
	Jun	3.1	-7.0	-2.2	105.6	1.5	10.5	-7.6	2.7	-2.7	2.1	-1.3
	Sep	0.7	4.2	-4.4	67.8	6.3	2.4	4.5	-4.8	5.4	-8.4	3.8
	Dec	41.0	4.2	-4.0	113.8	-2.5	37.9	-1.0	-3.6	-3.6	0.4	18.5
2008	Mar	0.2	3.5	3.7	-20.9	-3.5	-29.3	2.3	-8.4	5.0	0.3	-3.3
	Jun	-13.0	8.3	-6.1	57.4	0.9	13.1	4.5	17.1	9.3	3.5	1.4
	Sep	7.8	10.2	17.0	-9.1	0.1	10.3	4.8	-6.0	7.5	5.9	7.2
	Dec	9.9	1.3	11.6	-42.4	3.8	3.1	9.2	-6.4	7.2	-0.8	3.2
2009	Mar	-13.7	-1.2	-13.2	-46.2	-4.2	7.6	6.2	-42.5	-1.3	-4.2	-7.5
	Jun	-0.8	-3.8	8.7	63.7	-9.2	-4.9	-14.1	0.5	7.0	-7.7	-5.1
	Sep	-8.2	-14.4	1.2	40.4	-9.0	-6.0	0.2	23.1	-6.2	-4.8	-4.6
	Dec	-4.2	3.7	-2.8	-19.5	4.0	-3.6	-3.5	0.8	4.0	4.2	-1.1
2010	Mar	26.7	6.5	20.3	11.3	5.6	6.5	-1.2	15.4	6.2	1.8	10.0
	Jun	14.3	9.7	9.5	4.3	5.4	-8.3	14.5	3.7	-2.4	4.4	6.3
	Sep	2.0	-24.1	-8.5	-16.5	-4.0	1.5	2.2	8.5	-0.3	2.4	-2.2
	Dec	-4.5	25.5	11.3	-8.4	0.6	0.4	-1.8	0.0	6.4	-1.8	3.4
2011	Mar	8.4	0.9	10.8	31.7	-3.4	-7.9	-0.1	-3.7	-8.5	-0.9	3.2

1. Exports are valued fob (free on board – the value of goods at New Zealand ports before export, in New Zealand dollars) and include re-exports.

2. Figures are calculated on unrounded data.

3. Seasonally adjusted values, particularly for the latest periods, are subject to revision each quarter.

4. Seasonally adjusted values exclude estimated seasonal fluctuations, but include short-term irregular movements.

5. This series is not seasonally adjusted. This is because it does not have stable seasonality. Statistics for the latest three months are provisional.

HS – New Zealand Harmonised System Classification. (HS2007 applies to January 2007 and later data. HS2002 is used for earlier data.)

Source: Statistics New Zealand

Table 19

**Exports by top 10 HS categories**Quantities – seasonally adjusted<sup>(1)(2)</sup> – quarterly

	Milk powder, butter, and cheese	Meat and edible offal	Logs and wood <sup>(3)</sup>	Crude oil <sup>(4)</sup>	Mechanical machinery and equipment	Fruit	Fish, crustaceans, and molluscs <sup>(3)</sup>	Aluminium and aluminium articles <sup>(4)</sup>	Wine	Electrical machinery and equipment	Total merchandise exports	
HS codes	0401-0406	02	4403, 4406-4408, 4410-4411, 4413	2709	84	0803-0814	03 (excluding 030710)	76	2204	85	01-98	
Infoshare series EXPQ.	SH4AQS	SH1DQS	SH44QS	SH23Q		SH8AQS	SH03QS	SH12Q	SH21QS			
Derived from: EXPQ.	SH4AQ	SH1DQ	SH44Q			SH8AQ	SH03Q		SH21Q			
	tonnes (000)	tonnes (000)	cu. metres (000)	tonnes (000)	<sup>(5)</sup>	tonnes (000)	tonnes (000)	tonnes (000)	Litres (000)	<sup>(5)</sup>	<sup>(5)</sup>	
<b>Three months ended</b>												
2007	Mar	499	207	2,299	136	...	144	69	93	21	...	...
	Jun	466	203	2,247	243	...	164	70	102	21	...	...
	Sep	392	209	2,065	437	...	173	74	100	22	...	...
	Dec	488	209	2,018	794	...	238	66	103	21	...	...
2008	Mar	446	220	2,561	622	...	155	74	97	22	...	...
	Jun	379	219	2,004	768	...	168	69	100	24	...	...
	Sep	400	228	2,347	622	...	168	61	87	25	...	...
	Dec	421	212	2,438	517	...	168	57	85	27	...	...
2009	Mar	490	205	2,424	388	...	194	60	63	28	...	...
	Jun	583	208	2,877	645	...	174	61	72	33	...	...
	Sep	591	182	3,083	710	...	165	64	81	32	...	...
	Dec	556	204	2,947	582	...	168	68	83	35	...	...
2010	Mar	546	211	3,360	638	...	160	61	86	39	...	...
	Jun	543	211	3,243	638	...	161	63	89	36	...	...
	Sep	526	168	3,216	563	...	173	72	102	38	...	...
	Dec	568	203	3,881	500	...	160	72	98	43	...	...
2011	Mar	606	188	4,382	557	..	156	68	92	35	...	...
<b>Percentage change from previous period</b>												
2007	Mar	5.9	-6.3	-2.1	26.3	...	6.3	0.5	-4.6	18.9	...	...
	Jun	-6.6	-1.8	-2.3	78.0	...	14.1	0.4	9.1	-1.4	...	...
	Sep	-15.9	2.9	-8.1	80.3	...	5.4	6.4	-1.5	6.5	...	...
	Dec	24.5	0.3	-2.3	81.4	...	37.7	-11.1	2.4	-5.5	...	...
2008	Mar	-8.7	5.1	26.9	-21.6	...	-35.1	12.1	-5.1	7.3	...	...
	Jun	-14.9	-0.4	-21.7	23.3	...	8.4	-6.2	2.4	6.5	...	...
	Sep	5.6	4.1	17.1	-19.0	...	0.4	-11.4	-13.2	6.5	...	...
	Dec	5.2	-6.9	3.8	-16.8	...	0	-7.0	-1.5	7.2	...	...
2009	Mar	16.3	-3.3	-0.6	-24.9	...	15.4	4.3	-26.2	2.1	...	...
	Jun	18.9	1.0	18.7	66.1	...	-10.3	1.9	14.3	19.7	...	...
	Sep	1.4	-12.4	7.2	10.1	...	-5.5	6.0	13.3	-2.0	...	...
	Dec	-5.8	12.1	-4.4	-18.0	...	2.0	6.2	2.2	6.9	...	...
2010	Mar	-1.8	3.5	14.0	9.7	...	-5.1	-10.4	3.3	14.0	...	...
	Jun	-0.6	0.1	-3.5	0	...	1.2	2.8	3.2	-8.3	...	...
	Sep	-3.2	-20.5	-0.8	-11.8	...	7.0	13.7	15.0	5.6	...	...
	Dec	8.1	20.8	20.7	-11.2	...	-7.2	0.2	-3.8	11.9	...	...
2011	Mar	6.6	-7.4	12.9	11.5	...	-3.0	-5.1	-6.7	-19.2	...	...

1. Seasonally adjusted quantities exclude estimated seasonal fluctuations, but include short-term irregular movements.

2. Seasonally adjusted quantities particularly for the latest periods, are subject to revision each quarter. Re-exports are included.

3. This quantity series is not directly comparable to the equivalent value series in table 12. See 'HS codes' in the tables for differences.

4. This series is not seasonally adjusted. This is because it does not have stable seasonality. Statistics for the latest three months are provisional.

5. There is no single, consistent unit of quantity available for this category.

HS – New Zealand Harmonised System Classification. (HS2007 applies to January 2007 and later data. HS2002 is used for earlier data.)

**Symbol:**

... not applicable

**Source:** Statistics New Zealand

Table 20

**Imports by broad economic category (BEC) group<sup>(1)</sup>**Values – seasonally adjusted<sup>(2)(3)</sup> – quarterly

	Capital goods <sup>(4)</sup>		Intermediate goods <sup>(5)</sup>			Consumption goods <sup>(8)</sup>	Other categories			All merchandise imports <sup>(10)</sup>
	Machinery and plant	Transport equipment <sup>(6)</sup>	Crude oil <sup>(6)(7)</sup>	Other	Total		Passenger motor cars	Petrol and avgas <sup>(6)(7)</sup>	Military and other goods <sup>(6)(9)</sup>	
BEC codes	41	521	313	111, 121, 2, 311, 312, 314, 322, 42, 53	111, 121, 2, 31, 322, 42, 53	112, 122, 522, 6	51	321	7	1-7
Infoshare series BECQ.	SIA410S	SIA521	SID313	SIG990S	SIG999S	SIK999S	SIL510S	SIM321	SIN700	IMPQ.SOX1SCS
Derived from: BECQ.	SIA410			SIG990	SIG999	SIK999	SIL510			

\$(million)

**Three months ended**

2008	Mar	1,695	403	1,063	4,170	5,273	2,614	847	294	45	11,231
	Jun	1,985	540	990	4,726	5,751	2,725	742	412	51	12,302
	Sep	1,770	501	1,450	4,969	6,248	2,830	763	318	66	12,441
	Dec	1,807	394	1,197	5,194	6,483	2,915	550	306	56	12,410
2009	Mar	1,737	245	559	4,510	5,064	2,911	377	278	29	10,715
	Jun	1,535	774	611	3,799	4,432	2,813	434	280	29	10,338
	Sep	1,406	365	853	3,750	4,490	2,673	497	250	68	9,705
	Dec	1,338	269	915	3,418	4,387	2,600	619	324	72	9,549
2010	Mar	1,377	178	1,051	3,639	4,727	2,705	693	352	69	10,170
	Jun	1,349	238	1,090	3,906	5,043	2,737	718	360	255	10,755
	Sep	1,666	228	919	3,844	4,645	2,799	715	242	165	10,397
	Dec	1,542	615	980	3,915	4,959	2,806	706	345	112	11,004
2011	Mar	1,577	716 P	1,287 E	4,278	5,610	2,810	681	385 P	88 P	11,978

**Percentage change from previous period**

2008	Mar	-2.3	-36.0	34.2	4.6	8.8	-2.8	4.2	-14.0	-25.9	1.6
	Jun	17.1	34.1	-6.9	13.3	9.1	4.3	-12.5	40.1	13.5	9.5
	Sep	-10.9	-7.2	46.4	5.1	8.6	3.9	2.9	-22.8	30.2	1.1
	Dec	2.1	-21.3	-17.4	4.5	3.8	3.0	-27.9	-3.8	-14.8	-0.2
2009	Mar	-3.9	-37.8	-53.3	-13.2	-21.9	-0.1	-31.5	-9.0	-49.4	-13.7
	Jun	-11.6	216.0	9.2	-15.8	-12.5	-3.4	15.1	0.6	2.4	-3.5
	Sep	-8.4	-52.8	39.7	-1.3	1.3	-5.0	14.5	-10.5	134.0	-6.1
	Dec	-4.8	-26.5	7.3	-8.8	-2.3	-2.7	24.6	29.5	5.1	-1.6
2010	Mar	2.9	-33.7	14.9	6.5	7.8	4.0	12.0	8.4	-4.1	6.5
	Jun	-2.0	33.5	3.7	7.3	6.7	1.2	3.5	2.4	269.3	5.8
	Sep	23.5	-4.0	-15.6	-1.6	-7.9	2.2	-0.4	-32.7	-35.0	-3.3
	Dec	-7.4	169.6	6.6	1.8	6.8	0.3	-1.2	42.5	-32.1	5.8
2011	Mar	2.3	16.4	31.2	9.3	13.1	0.1	-3.6	11.5	-21.9	8.9

1. Imports are valued cif (cost, including insurance and freight to New Zealand, in New Zealand dollars). Figures are calculated on unrounded data.

2. Seasonally adjusted values exclude estimated seasonal fluctuations, but include short-term irregular movements.

3. Seasonally adjusted values, particularly for the latest periods, are subject to revision each quarter.

4. Excludes passenger motor cars. (There is a separate series for these because industry and household purchases cannot be split.)

5. Excludes petrol and avgas. (There is a separate series for these because industry and household purchases cannot be split.)

6. This series is not seasonally adjusted. This is because it does not have stable seasonality.

7. For the latest month, values for crude oil and some other petroleum products are calculated from estimated prices.

8. Excludes passenger motor cars, petrol and avgas, and military equipment.

9. Military equipment (including frigates), confidential, miscellaneous and unclassified goods. Military helicopters are in capital transport equipment.

10. This total series may not equal the sum of its parts because it is seasonally adjusted directly, and is calculated from total Harmonised System (HS) data, while the categories use BEC data – some HS commodities (eg monetary gold) are excluded from BEC.

**Symbols:**

E estimated

P provisional (Statistics for the latest three months are provisional.)

**Source:** Statistics New Zealand