

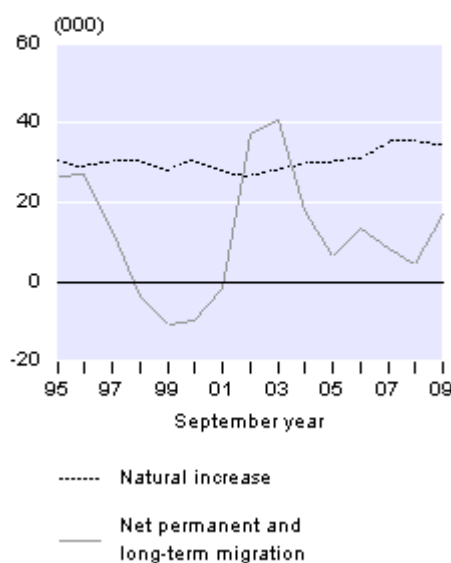
Embargoed until 10:45am – 12 November 2009

National Population Estimates: September 2009 quarter

Highlights

- The estimated resident population of New Zealand was 4.33 million at 30 September 2009.
- Population growth was 51,700 (1.2 percent) during the September 2009 year.
- Natural increase and net migration contributed 34,700 and 17,000, respectively, during the September 2009 year.
- The median ages for males and females were 35.5 and 37.5 years, respectively, at 30 September 2009.

Components of Annual Population Change
1995–2009



Estimated Resident Population

Age group (years)	At 30 September 2008	At 30 September 2009 P	Percentage change 2008–09 P
All ages	4,279,800	4,331,600	1.2
Under 15	889,600	892,400	0.3
15–39	1,478,100	1,489,500	0.8
40–64	1,371,100	1,393,600	1.6
65+	541,000	556,100	2.8

P provisional

Geoff Bascand
Government Statistician

12 November 2009
ISSN 1178-0576

Commentary

Background

This release contains estimates of the total population of New Zealand at 30 September 2009. Estimates by single year of age will be available on the Statistics New Zealand website (via [Infoshare](#)) on 12 February 2010.

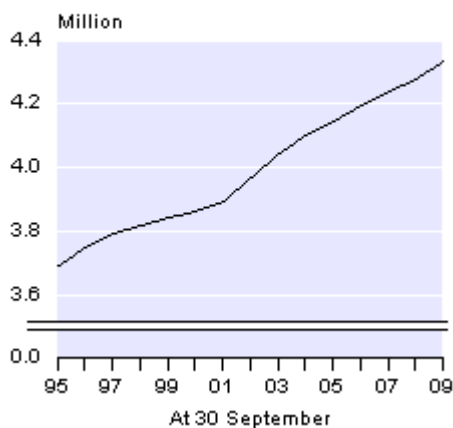
Population estimates give the best available measure of the size and age-sex structure of the population usually living in an area. Estimates are based on the latest census data and on births, deaths, and migration since the census. National population estimates are published quarterly and subnational population estimates are published annually.

The estimates in this release are provisional. They incorporate provisional estimates of the number of births and deaths that occurred in the September 2009 year. The finalised data will be released on 12 February 2010. In addition, population estimates after 30 June 2006 will be revised following results from the 2011 Census of Population and Dwellings.

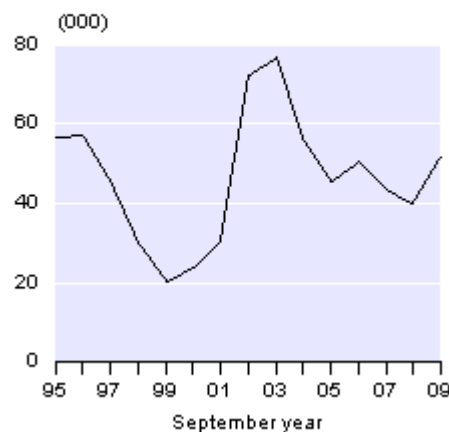
Estimated resident population at 30 September 2009

The estimated resident population of New Zealand was 4,331,600 at 30 September 2009, with 2,125,900 males and 2,205,700 females. At 30 September 2009, there were 96 males for every 100 females.

Estimated Resident Population
1995–2009



Annual Population Change
1995–2009



Annual population change

In the September 2009 year, the estimated resident population grew by 51,700 (1.2 percent), compared with 39,900 (0.9 percent) in the previous September year. The population growth in the September 2009 year was higher than the average annual increase of 49,000 (1.2 percent) recorded during the 10-year period from September 1999 to September 2009.

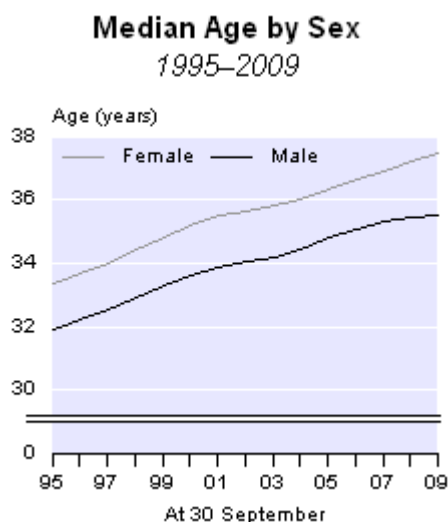
The population growth for the September 2009 year resulted from a natural increase (excess of births over deaths) of 34,700 and a net permanent and long-term migration gain of 17,000. The level of net permanent and long-term migration was the highest for a September year since 2004 (17,800). Historically, natural increase has been the dominant element in population growth. Over the last 40 years, natural increase accounted for four-fifths of New Zealand's total population growth. During the September 2009 year, natural increase accounted for two-thirds of population growth.

Quarterly population change

During the September 2009 quarter, New Zealand's estimated resident population grew by 15,800 (0.4 percent). This growth resulted from a natural increase of 8,400, and a net permanent and long-term migration gain of 7,400. In comparison, for the September 2008 quarter, natural increase was slightly lower (8,100) and a net migration gain of 2,900 resulted in quarterly population growth of 11,000 (0.3 percent).

Median age

New Zealand has an ageing population because of a shift to sustained low fertility and low mortality rates. This shift is also observed in other Organisation for Economic Co-operation and Development (OECD) countries. At 30 September 2009, half New Zealand's population was over the age of 36.6 years, compared with a median age of 34.1 years a decade earlier.



The median age for males is now 35.5 years, while for females it is 37.5 years. Over the past decade, the median age has increased 2.2 years for males and 2.6 years for females. The lower median age for males reflects their lower life expectancy of 78.2 years, compared with 82.2 years for females (New Zealand abridged life table, 2006–2008).

Changes in age composition

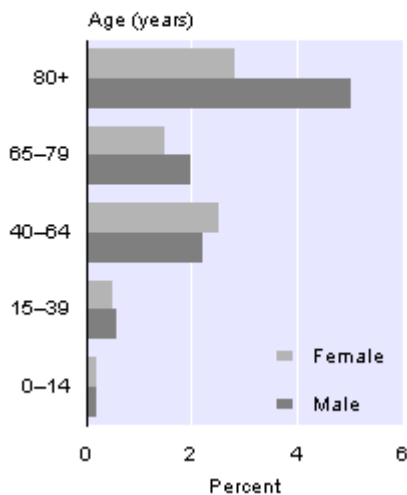
The age composition of New Zealand's population has changed over the past decade. In the 10 years ended 30 September 2009, the number of children (aged 0–14 years) grew to 892,400, an average annual increase of 1,500 (0.2 percent). For the year ended 30 September 2009, the increase in the number of children of 2,800 (0.3 percent) was above the annual average for the decade. At 30 September 2009, children accounted for 21 percent of the New Zealand population, down from 23 percent at 30 September 1999.

At 30 September 2009, the population aged 15–39 years reached 1,489,500, an increase of 11,400 (0.8 percent) compared with the September 2008 figure. In the 10 years ended September 2009, the average annual increase for this age group was lower, at 7,800 (0.5 percent). The population aged 15–39 accounted for 34 percent of the New Zealand population at 30 September 2009, down from 37 percent a decade earlier.

Average Annual Population Change

By age group and sex

10 years ended September 2009



Thirty-two percent of the population were aged 40–64 years at 30 September 2009, up from 29 percent in 1999. This age group increased by 22,400 (1.6 percent) in the year ended 30 September 2009, to reach 1,393,600, which was below the average annual increase of 29,000 (2.4 percent) for the 10 years ended September 2009.

During the September 2009 year, the population aged 65–79 years increased by 10,400 (2.6 percent) to reach 409,300. In the 10 years ended September 2009, the population aged 65–79 years grew at an average annual rate of 1.7 percent (6,400). The proportion of the population aged 65–79 years was 9.4 percent at 30 September 2009, up from 9.0 percent in 1999.

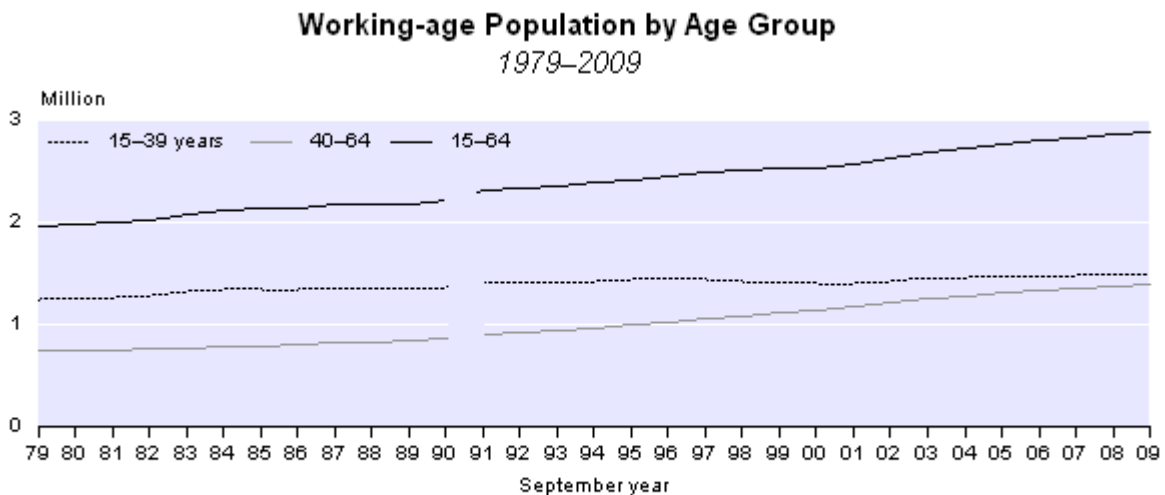
In the 10 years ended September 2009, there was also a slight increase in the proportion of the population aged 80 years and over (80+), from 2.7 percent in 1999 to 3.4 percent in September 2009. The 80+ population reached 146,700 at 30 September 2009, an average annual increase of 4,400 (3.6 percent) over the decade. The size and growth rate of this age group varied significantly by sex. The average annual growth rate

for males for the decade was 5.0 percent, compared with 2.8 percent for females. In the year ended 30 September 2009, the male population in the 80+ age group increased by 4.9 percent (2,700), to reach 56,700, while the female population increased by 2.3 percent (2,000), to 90,100.

Trends in the working-age population, 1979–2009

The population aged 15–64 years is commonly known as the working-age population. Demographic dependency ratios usually relate the number of people in dependent age groups (defined as those aged 0–14 years and 65+ years) to the working-age population (those aged 15–64 years). Note that some people aged 15–64 years may not be in the workforce, while some people aged 65+ may still be in the workforce.

The working-age population increased 47 percent between the September 1979 and 2009 years, compared with total population growth of 39 percent in the same period. In September 1979 there were 1,956,000 people of working-age. That number has grown to reach 2,883,100 in 2009.



Note: The break in series between 1990 and 1991 denotes a change from the de facto population concept to the estimated resident population concept.

Within the broad working-age category, the 15–39-year age group has remained the dominant group. Sixty-three percent of the working-age population were aged 15–39 years in the September years from 1979–87. Since 1988, the proportion of this younger working-age population has steadily declined, down to 52 percent in the year ended September 2009. In 1979, the proportion of the working-age population aged 40–64 years was 37 percent, and that proportion has risen steadily to reach 48 percent in the year ended September 2009.

A growing proportion of older New Zealanders are continuing to work beyond the age of entitlement for New Zealand Superannuation (65 years). Among OECD countries, New Zealand has one of the highest labour force participation rates for the 65+ age group (Labour Force Participation of New Zealanders Aged 65 Years and Over, 1986–2006). In 2006, 17 percent (or one in six) of New Zealand residents aged 65+ were in the labour force, up from less than 7 percent in 1986.

Population clock

Statistics NZ's online population clock gives a real-time approximation of the estimated resident population of New Zealand. The population clock uses the latest quarterly estimated resident population, and estimates for the expected number of births, deaths, and net migration during the following quarter. The settings for each component (births, deaths, and net migration) are derived by converting the quarterly estimated totals into a 'per minute' figure, making allowance for the number of days per quarter. The population clock can be viewed on the Statistics NZ website: www.stats.govt.nz.

Different population concepts

Users of population statistics need to be aware that there are three main population measures produced by Statistics NZ: the census night population count, the census usually resident population count, and the estimated resident population. The population counts published from the census are not comparable with the estimated resident population. The estimated resident population includes adjustments for net census undercount and for New Zealand residents temporarily overseas on census night. For more information see the 'Technical notes' section of this release.

For technical information contact:
Joel Watkins or Esther Hogenhout
Christchurch 03 964 8700
Email: demography@stats.govt.nz

Next release ...

National Population Estimates: December 2009 quarter will be released on 12 February 2010.

Technical notes

Population measures

There are three population measures commonly produced by Statistics New Zealand: census night population count, census usually resident population count, and estimated resident population.

The census night population count of New Zealand is a count of all people present in New Zealand on a given census night. This count includes visitors from overseas who are counted on census night, but excludes residents who are temporarily overseas on census night. The census usually resident population count of New Zealand is a count of all people who usually live in New Zealand and are present in New Zealand on a given census night. This count excludes visitors from overseas and residents who are temporarily overseas on census night.

The estimated resident population of New Zealand is an estimate of all people who usually live in New Zealand at a given date. This estimate includes all residents present in New Zealand and counted by the census (census usually resident population count), residents who are temporarily overseas (who are not included in the census), and an adjustment for residents missed or counted more than once by the census (net census undercount). Visitors from overseas are excluded.

The population counts published from the census are not comparable with the estimated resident population.

Base population

The estimated resident population at 30 June 2006 forms the base population for deriving the estimated resident population at a given date following the 2006 Census. This base population is also used in the revision of intercensal population estimates for the five-year period between the 2001 and 2006 Censuses.

The estimated resident population of New Zealand at 30 June 2006 is based on the census usually resident population count from the 2006 Census (held on 7 March 2006), updated for: net census undercount (as measured by the 2006 Post-enumeration Survey); the number of residents temporarily overseas on census night; births, deaths, and net permanent and long-term (PLT) migration between 7 March 2006 and 30 June 2006; and reconciliation with demographic estimates at ages 0–4 years.

Resident population estimates

Quarterly estimates from September 2006 onwards were derived by updating the estimated resident population at 30 June 2006 for births, deaths, and net PLT migration during the ensuing period.

Derived figures

Derived figures (for example, percentage annual increase) are calculated using data of greater precision than published. This could result in slight variations.

Median age

Half the population is younger, and half older, than this age.

Final figures

Final figures for the estimated resident population at 30 September 2009 will be available in February 2010. In addition, population estimates after 30 June 2006 will be revised following results from the next Census of Population and Dwellings.

More information

For more information, refer to the [information about the population estimates](#) on the Statistics NZ website.

Quarterly national population estimates by single-year of age, five-year age groups, and selected age groups are available via [Infoshare](#) on the Statistics NZ website (demography age estimates in the 'Population' category).

Annual population estimates by age and sex for subnational areas are freely available via [Table Builder](#) on the Statistics NZ website.

Population estimates for the Māori ethnic group are updated twice a year on the Statistics NZ website.

Copyright

Information obtained from Statistics NZ may be freely used, reproduced, or quoted unless otherwise specified. In all cases Statistics NZ must be acknowledged as the source.

Liability

While care has been used in processing, analysing and extracting information, Statistics NZ gives no warranty that the information supplied is free from error. Statistics NZ shall not be liable for any loss suffered through the use, directly or indirectly, of any information, product or service.

Timing

Timed statistical releases are delivered using postal and electronic services provided by third parties. Delivery of these releases may be delayed by circumstances outside the control of Statistics NZ. Statistics NZ accepts no responsibility for any such delays.

Tables

The following tables are printed with this Hot Off The Press and can also be downloaded from the Statistics NZ website in Excel format. If you do not have access to Excel, you may use the [Excel file viewer](#) to view, print and export the contents of the file.

1. Estimated resident population and population change
2. Estimated resident population, by broad age groups
3. Estimated resident population, by five-year age groups

Table 1

Estimated Resident Population and Population Change

	Estimated resident population ⁽¹⁾	Population change		Population change due to:	
		Number ⁽²⁾	Percent	Natural increase ⁽³⁾	Net permanent and long-term migration ⁽⁴⁾
Quarter ended					
30 Sep 2006	4,196,600	12,000	0.29	7,100	5,000
31 Dec 2006	4,211,400	14,800	0.35	8,700	6,100
31 Mar 2007	4,222,700	11,300	0.27	9,100	2,200
30 Jun 2007	4,228,300	5,600	0.13	8,800	-3,200
30 Sep 2007	4,239,900	11,600	0.27	8,400	3,200
31 Dec 2007	4,252,600	12,700	0.30	9,400	3,300
31 Mar 2008	4,263,600	11,000	0.26	9,600	1,400
30 Jun 2008	4,268,900	5,300	0.12	8,500	-3,200
30 Sep 2008	4,279,800	11,000	0.26	8,100	2,900
31 Dec 2008	4,291,600	11,700	0.27	9,100	2,700
31 Mar 2009	4,305,700	14,200	0.33	9,100	5,100
30 Jun 2009	4,315,800	10,100	0.23	8,200	1,900
30 Sep 2009 P	4,331,600	15,800	0.37	8,400	7,400
Year ended 30 September					
1999	3,841,100	20,100	0.53	27,900	-10,500
2000	3,864,900	23,800	0.62	30,600	-9,500
2001	3,895,400	30,500	0.79	27,900	-1,700
2002	3,967,600	72,200	1.85	26,400	37,100
2003	4,044,600	77,000	1.94	27,900	40,400
2004	4,100,600	56,000	1.38	29,500	17,800
2005	4,145,900	45,300	1.11	30,200	6,400
2006	4,196,600	50,700	1.22	31,000	13,200
2007	4,239,900	43,300	1.03	35,000	8,300
2008	4,279,800	39,900	0.94	35,500	4,400
2009 P	4,331,600	51,700	1.21	34,700	17,000

- (1) The estimated resident population is based on the census usually resident population count, updated for residents missed or counted more than once by the census (net census undercount); residents temporarily overseas on census night; and births, deaths, and net permanent and long-term (PLT) migration between census night and the date of the estimate.
- (2) Natural increase plus net permanent and long term (PLT) migration. The difference between annual population change and natural increase and net PLT migration in years up to 30 September 2006 is due to intercensal adjustments.
- (3) Excess of births over deaths. Births and deaths have been estimated by date of occurrence. They differ from births and deaths registered over the same period.
- (4) Permanent and long-term arrivals include overseas migrants who arrive in New Zealand intending to stay for a period of 12 months or more (or permanently), plus New Zealand residents returning after an absence of 12 months or more. Permanent and long-term departures include New Zealand residents departing for an intended period of 12 months or more (or permanently), plus overseas visitors departing New Zealand after a stay of 12 months or more.

Note: Individual figures may not sum to stated totals due to rounding. All derived figures have been calculated using data of greater precision than published.

Symbol:

P provisional

Table 2

Estimated Resident Population⁽¹⁾
By broad age groups

At 30 September	Age group (years)					Median age (years)
	All ages	Under 15	15-39	40-64	65+	
People						
1999	3,841,100	877,700	1,411,200	1,103,600	448,500	34.1
2000	3,864,900	879,000	1,398,100	1,133,000	454,800	34.4
2001	3,895,400	878,500	1,392,000	1,163,300	461,600	34.7
2002	3,967,600	885,000	1,412,000	1,201,800	468,800	34.9
2003	4,044,600	890,700	1,436,000	1,240,800	477,100	35.0
2004	4,100,600	892,800	1,446,800	1,274,400	486,600	35.3
2005	4,145,900	889,200	1,454,900	1,301,700	500,200	35.6
2006	4,196,600	887,900	1,467,000	1,326,800	514,900	35.9
2007	4,239,900	888,600	1,473,300	1,348,400	529,600	36.2
2008	4,279,800	889,600	1,478,100	1,371,100	541,000	36.4
2009 P	4,331,600	892,400	1,489,500	1,393,600	556,100	36.6
Males						
1999	1,887,200	450,700	694,500	546,600	195,400	33.3
2000	1,896,900	451,300	687,000	559,800	198,700	33.6
2001	1,910,300	450,800	683,900	573,600	202,100	33.9
2002	1,945,800	453,600	694,200	591,900	206,000	34.0
2003	1,983,800	456,600	706,300	610,300	210,600	34.2
2004	2,009,900	457,600	710,600	626,100	215,600	34.5
2005	2,030,500	455,600	713,500	638,500	222,900	34.8
2006	2,054,400	454,900	719,200	649,500	230,700	35.1
2007	2,076,800	455,200	724,100	659,100	238,400	35.3
2008	2,097,900	455,900	728,500	669,000	244,500	35.4
2009 P	2,125,900	457,700	737,000	678,800	252,400	35.5
Females						
1999	1,953,900	427,100	716,700	557,000	253,100	34.8
2000	1,968,000	427,600	711,100	573,200	256,100	35.2
2001	1,985,100	427,700	708,100	589,700	259,500	35.5
2002	2,021,800	431,300	717,800	609,900	262,800	35.6
2003	2,060,800	434,100	729,700	630,500	266,500	35.8
2004	2,090,700	435,200	736,100	648,300	271,000	36.0
2005	2,115,400	433,500	741,400	663,200	277,300	36.4
2006	2,142,200	433,000	747,700	677,300	284,200	36.6
2007	2,163,100	433,400	749,200	689,200	291,200	36.9
2008	2,181,900	433,700	749,600	702,100	296,500	37.2
2009 P	2,205,700	434,700	752,600	714,800	303,600	37.5

(1) The estimated resident population is based on the census usually resident population count, updated for residents missed or counted more than once by the census (net census undercount); residents temporarily overseas on census night; and births, deaths, and net permanent and long-term migration between census night and the date of the estimate.

Note: Individual figures may not sum to stated totals due to rounding.

Symbol:

P provisional

Table 3

Estimated Resident Population⁽¹⁾
By five-year age groups

Age group (years)	At 30 September								
	Males			Females			People		
	1999	2008	2009 P	1999	2008	2009 P	1999	2008	2009 P
Under 5	146,410	154,730	157,840	138,570	147,090	149,520	284,980	301,820	307,360
5–9	156,700	147,150	147,520	148,060	140,290	140,460	304,750	287,430	287,980
10–14	147,550	154,030	152,360	140,460	146,360	144,740	288,010	300,400	297,100
15–19	138,440	165,280	165,670	133,440	158,250	158,180	271,890	323,530	323,850
20–24	128,920	151,050	157,130	128,730	147,460	150,580	257,650	298,520	307,710
25–29	133,160	134,950	139,850	141,630	139,650	143,150	274,790	274,600	283,000
30–34	141,390	129,220	128,940	151,870	140,750	139,940	293,260	269,970	268,880
35–39	152,640	148,000	145,370	161,020	163,480	160,690	313,660	311,480	306,070
40–44	140,500	150,950	149,990	145,670	162,290	162,310	286,170	313,240	312,310
45–49	126,780	155,640	156,670	128,790	165,230	166,440	255,570	320,860	323,110
50–54	115,970	136,710	140,080	116,170	141,850	145,970	232,140	278,560	286,050
55–59	90,890	120,520	122,110	91,530	124,020	126,160	182,420	244,550	248,270
60–64	72,470	105,210	109,950	74,870	108,710	113,870	147,340	213,920	223,830
65–69	64,550	81,540	84,300	67,490	85,870	88,260	132,030	167,410	172,550
70–74	56,210	60,900	63,010	62,780	66,130	68,780	118,990	127,030	131,790
75–79	39,880	48,050	48,470	54,510	56,450	56,520	94,390	104,500	104,990
80–84	21,090	32,970	34,040	36,200	45,080	45,390	57,290	78,050	79,430
85–89	10,320	15,440	16,830	21,820	28,230	29,740	32,140	43,670	46,580
90 and over	3,340	5,580	5,780	10,300	14,730	14,950	13,640	20,310	20,730
All ages	1,887,200	2,097,900	2,125,900	1,953,900	2,181,900	2,205,700	3,841,100	4,279,800	4,331,600

(1) The estimated resident population is based on the census usually resident population count, updated for residents missed or counted more than once by the census (net census undercount); residents temporarily overseas on census night; and births, deaths, and net permanent and long-term migration between census night and the date of the estimate.

Note: Individual figures may not sum to stated totals due to rounding.

Symbol:

P provisional