



## Bio-Protection

*Bioprotection science for New Zealand*

### Bio-Protection Research Centre - the facts

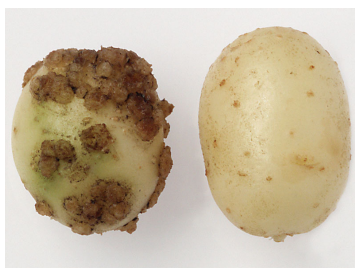
Our world-leading research focuses on finding new, non-pesticide and sustainable solutions that protect New Zealand's plant-based, productive ecosystems from the threat of pests, pathogens and weeds.

This work is of vital importance to the future development of the economy – particularly New Zealand's plant-based primary industries - in light of a burgeoning and diversifying trade and tourism environment.

Our research is mainly of a strategic nature, as opposed to short-term problem solving, and is embodied in four themes:

- **World-leading biosecurity**

Developing ultra-sensitive detection systems and mathematical models that protect against plant pest incursions at New Zealand's border.

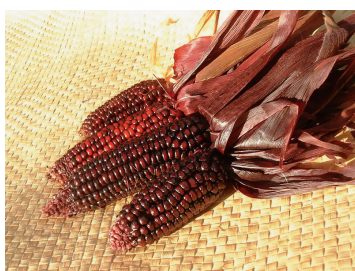
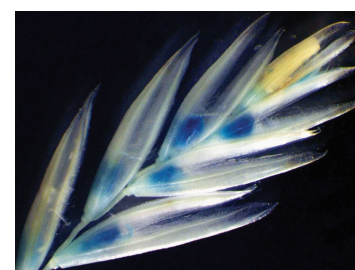


- **Sustainable bio-protection**

Understanding ecosystem dynamics for sustainable agriculture and environmental protection.

- **Plant bio-protection systems biology**

Understanding cellular interactions to develop superior crops with enhanced pest and pathogen resistance.



- **Maori bio-protection**

Protecting plants from pest threats using systems and approaches that are grounded in traditional and contemporary mātāuranga Māori knowledge.



## **Bio-Protection**

*Bioprotection science for New Zealand*

A Centre of Research Excellence, we are a collaborative venture - designed to draw on the skills and expertise of Crown Research Institutes, Universities and other research organisations throughout New Zealand.



We are hosted by one of our four partner institutes – Lincoln University – with the other three partners being AgResearch, Crop & Food Research and Massey University. The partners were instrumental in forming the Centre in 2003 and continue to provide input into our research programmes. A number of other national and international research and academic institutes regularly collaborate with us.

Another Centre goal is to ensure excellence and relevance in human capability and development through support of a large number of postgraduate students and post-doctoral scientists.

Tying into this, our Māori Development Coordinator, Melanie Mark-Shadbolt (Ngāti Kahungunu, Ngāti Porou, Te Āti Awa, Ngāti Raukawa) is developing an outreach programme to profile bioprotection to Māori students and stakeholders. She also works to establish and identify potential collaborations with Māori communities and agencies.

While the Centre's management team is based at Lincoln, researchers and students funded by the Centre are distributed across New Zealand and Australia.

**[www.bioprotection.org.nz](http://www.bioprotection.org.nz)**

**Bio-Protection Research Centre  
PO Box 84  
Lincoln University 7647  
Canterbury, New Zealand**

**Phone: +64 3 325 3696  
Fax: +64 3 325 3864**

**Media inquiries:**

**Communications Advisor, Caroline Lucas  
Phone: +64 3 325 3696 extension 8567  
Mobile: 021 9900 58  
Email: [lucasc@lincoln.ac.nz](mailto:lucasc@lincoln.ac.nz)**