



THE OFFICIAL NEW ZEALAND MUSIC CHART

CHART 1581
10 September 2007

www.nztop40.com

TOP 40 SINGLES

THIS WEEK	LAST WEEK	WEEKS ON CHART	TITLE/ARTIST	CATALOGUE No. LABEL DISTRIBUTOR
1	2	5	STRONGER KANYE WEST	1744463 UNIVERSAL
2	35	6	SORRY, BLAME IT ON ME AKON	* UNIVERSAL
3	12	4	ME LOVE SEAN KINGSTON	* SBME
4	3	12	BARTENDER T-PAIN FEAT. AKON	88697150152 SBME
5	1	7	BEAUTIFUL GIRLS SEAN KINGSTON	* SBME
6	8	10	BUBBLY COLBIE CAILLAT	1740592 UNIVERSAL
7	7	7	CAN'T LEAVE EM ALONE CIARA FEAT. 50 CENT	* SBME
8	NEW	1	AYO TECHNOLOGY 50 CENT FEAT. JUSTIN TIMBERLAKE	1746310 UNIVERSAL
9	5	14	THE WAY I ARE TIMBALAND FEAT. KERI HILSON	1741877 UNIVERSAL
10	9	5	BLEED IT OUT LINKIN PARK	9362499288 WEA/WARNER
11	6	16	BIG GIRLS DON'T CRY FERGIE	1740916 UNIVERSAL
12	4	4	MY SH*T SCRIBE	5144237862 DIRTY/WARNER
13	10	8	LIL LOVE BONE THUGS N HARMONY FEAT. MARIAH CAREY	* UNIVERSAL
14	11	10	DEAR MR PRESIDENT PINK	88697127502 SBME
15	14	13	HEY THERE DELILAH PLAIN WHITE T'S	5070622 HOLLYWOOD/EMI
16	18	5	DANCEFLOOR ANTHEM (I DON'T WANNA BE IN LOVE) GOOD CHARLOTTE	88697115642 SBME
17	22	5	SPIDER PIG HANS ZIMMER	* WEA/WARNER
18	16	5	WALL TO WALL CHRIS BROWN	88697125692 SBME
19	17	7	SHUT UP AND DRIVE RIHANNA	1746118 UNIVERSAL
20	15	18	UMBRELLA RIHANNA FEAT. JAY Z	1735491 UNIVERSAL
21	19	4	THE PRETENDER FOO FIGHTERS	* SBME
22	13	11	SAME GIRL R KELLY FEAT. USHER	* SBME
23	23	18	WHAT I'VE DONE LINKIN PARK	9362499701 WEA/WARNER
24	31	4	DO IT NELLY FURTADO FEAT. MISSY ELLIOTT	* UNIVERSAL
25	30	3	SUMMER LOVE JUSTIN TIMBERLAKE	* SBME
26	25	6	HOW DO I BREATHE? MARIO FEAT. FABOLOUS	88697117192 SBME
27	28	14	4 IN THE MORNING GWEN STEFANI	1735562 UNIVERSAL
28	29	9	CLOTHES OFF GYM CLASS HEROES	756789758 WEA/WARNER
29	32	7	WHEN YOU'RE GONE AVRIL LAVIGNE	* SBME
30	26	27	MAYBE OPSHOP	3939250 SIREN/EMI
31	RE-ENTRY	5	THE TAKE OVER, THE BREAK'S OVER FALL OUT BOY	1739377 UNIVERSAL
32	NEW	1	APOLOGIZE TIMBALAND	* UNIVERSAL
33	27	14	TEENAGERS MY CHEMICAL ROMANCE	9362499363 WEA/WARNER
34	21	11	POP, LOCK AND DROP IT HUEY	88697003521 SBME
35	36	2	THE ONE THE EXILES	* EXILEMUSIC/DRMNZ
36	20	13	BIG THINGS POPPIN' TI	* WEA/WARNER
37	RE-ENTRY	2	THERE'S NOTHIN' SEAN KINGSTON	* SBME
38	24	13	LOVE STONED JUSTIN TIMBERLAKE	88697093362 SBME
39	RE-ENTRY	2	FR.E.S.H. SCRIBE	* DIRTY/WARNER
40	34	19	MAKES ME WONDER MAROON 5	1734497 OCTONE/UNIVERSAL

TOP 10 COMPILATIONS

THIS WEEK	LAST WEEK	WEEKS ON CHART	TITLE/ARTIST	CATALOGUE No. LABEL DISTRIBUTOR
1	3	10	NOW THAT'S WHAT I CALL MUSIC 24 VARIOUS	2 5027022 EMI
2	2	2	ALL BLACKS: THE MUSIC VARIOUS	LPABCD001 LOOP/SBME
3	1	6	OLD SKOOL OF ROCK VARIOUS	9849879 UNIVERSAL
4	NEW	1	THA 411 VARIOUS	88697168442 SBME
5	4	13	SAD SONGS VARIOUS	3910662 EMI
6	6	2	WEAPON OF CHOICE VARIOUS	88697167372 SBME
7	5	4	AS CHAOS FALLS 2 VARIOUS	5144235672 WEA/WARNER
8	8	10	HIP HOP V: THE COLLECTION VARIOUS	9848274 UNIVERSAL
9	7	3	WHAT A WONDERFUL WORLD VARIOUS	88697052752 SBME
10	9	48	HOUSEWORK SONGS VARIOUS	3760112 EMI

TOP 10 MUSIC DVDs

THIS WEEK	LAST WEEK	WEEKS ON CHART	TITLE/ARTIST	CATALOGUE No. LABEL DISTRIBUTOR
1	1	109	THE FAREWELL TOUR PART I THE EAGLES	5 2564623072 WEA/WARNER
2	3	32	NEW YORK MEMORIES: LIVE AT RADIO CITY ANDRE RIEU	1713579 UNIVERSAL
3	5	5	TH' 2006 REUNION TOUR LIVE TH' DUDES	3838449 EMI
4	2	6	THE BIGGEST BANG ROLLING STONES	1741630 UNIVERSAL
5	4	4	68 COMEBACK SPECIAL ELVIS PRESLEY	82876705069 SBME
6	RE-ENTRY	16	LIVE FROM WEMBLEY ARENA PINK	88697109929 SBME
7	9	19	A NEW JOURNEY: LIVE AT SLANE CASTLE CELTIC WOMAN	3832789 MANHATTAN/EMI
8	8	15	LIVE IN DUBLIN ANDRE RIEU	9865874 UNIVERSAL
9	10	3	LED ZEPPELIN LED ZEPPELIN	2 0349701982 WEA/WARNER
10	6	3	WASTED SLEEPLESS NIGHTS THE ANGELS	LIB0VD1074 LIBERATION/UNIVERSAL

TOP 10 AIRPLAY

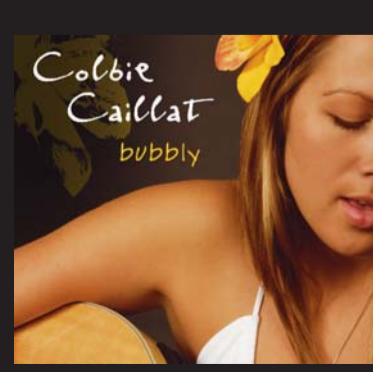
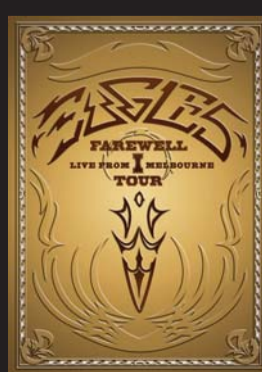
THIS WEEK	LAST WEEK	WEEKS ON CHART	TITLE/ARTIST	CATALOGUE No. LABEL DISTRIBUTOR
1	1	5	BUBBLY COLBIE CAILLAT	1740592 UNIVERSAL
2	2	12	BIG GIRLS DON'T CRY FERGIE	1740916 UNIVERSAL
3	3	7	THE WAY I ARE TIMBALAND FEAT. KERI HILSON	1741877 UNIVERSAL
4	9	5	HEY THERE DELILAH PLAIN WHITE T'S	5070622 HOLLYWOOD/EMI
5	7	3	STRONGER KANYE WEST	1744463 UNIVERSAL
6	10	2	SHUT UP AND DRIVE RIHANNA	1746118 UNIVERSAL
7	5	18	MAKES ME WONDER MAROON 5	1734497 OCTONE/UNIVERSAL
8	NEW	1	DO IT NELLY FURTADO FEAT. MISSY ELLIOTT	* UNIVERSAL
9	RE-ENTRY	4	FIRST TIME LIFEHOUSE	* UNIVERSAL
10	6	7	4 IN THE MORNING GWEN STEFANI	1735562 UNIVERSAL

THE TOP 40 SINGLES CHART IS COMPILED FROM RETAIL PHYSICAL AND DIGITAL SALES, AND RADIO AIRPLAY.

THE TOP 40 ALBUMS, TOP 10 COMPILATIONS AND TOP 10 MUSIC DVD CHARTS ARE COMPILED FROM RETAIL PHYSICAL AND DIGITAL SALES.

TOP 40 ALBUMS

THIS WEEK	LAST WEEK	WEEKS ON CHART	TITLE/ARTIST	CATALOGUE No. LABEL DISTRIBUTOR
1	1	6	ONE CHANCE PAUL POTTS	2 88697138682 SBME
2	NEW	1	HEAL ME SALMONELLA DUB	5051772 VIRGIN/EMI
3	7	6	SEAN KINGSTON SEAN KINGSTON	88697144492 SBME
4	9	17	MINUTES TO MIDNIGHT LINKIN PARK	9362444772 WEA/WARNER
5	8	4	HIGH SCHOOL MUSICAL 2 OST HIGH SCHOOL MUSICAL CAST	5027642 DISNEY/EMI
6	2	13	TRAVELING WILBURYS COLLECTION TRAVELING WILBURYS	8122799824 RHINO/WARNER
7	11	23	SHOCK VALUE TIMBALAND	1726805 UNIVERSAL
8	3	6	THE KING ELVIS PRESLEY	88697118042 SBME
9	16	43	I'M NOT DEAD: TOUR EDITION PINK	2 88697095062 SBME
10	6	2	LIFELINE BEN HARPER	5061042 VIRGIN/EMI
11	5	3	COMPLETE GREATEST HITS THE EAGLES	8122737312 WEA/WARNER
12	RE-ENTRY	8	COCO COLBIE CAILLAT	1740518 UNIVERSAL
13	14	3	SHAPESHIFTER LIVE SHAPESHIFTER	TONELP003 TRUETONE/RHYTHM/METHOD
14	10	4	SAY WHAT YOU'RE THINKING KATCHAFIRE	5051832 KATCHAFIRE/CAPITOL
15	15	52	FUTURESEX / LOVESOUNDS JUSTIN TIMBERLAKE	2 82876880622 SBME
16	4	7	THE POLICE THE POLICE	1736149 UNIVERSAL
17	12	2	GREATEST HOOKS DR HOOK	3957662 EMI
18	13	15	LONG PLAYER HOLLIE SMITH	3980072 SOUND/SMITH/EMI
19	18	19	THE DUTCHESS FERGIE	1707562 UNIVERSAL
20	19	14	GOOD GIRL GONE BAD RIHANNA	1736161 UNIVERSAL
21	RE-ENTRY	30	INFINITY ON HIGH: PLATINUM EDITION FALL OUT BOY	1746177 UNIVERSAL
22	21	6	UNTITLED KORN	5015762 VIRGIN/EMI
23	24	40	ALBERTINE BROOKE FRASER	4 88697025152 SBME
24	22	13	EPIPHANY T-PAIN	88697089192 SBME
25	23	7	I'LL BE LIGHTNING LIAM FINN	LIB0CB2445 LIBERATION/UNIVERSAL
26	25	40	THE SWEET ESCAPE GWEN STEFANI	1717390 UNIVERSAL
27	NEW	1	THE TRUTH YOUNG SID	1746503 MTC/UNIVERSAL
28	RE-ENTRY	24	BACK TO BLACK AMY WINEHOUSE	1714211 UNIVERSAL
29	31	40	THE BLACK PARADE MY CHEMICAL ROMANCE	9362444272 WEA/WARNER
30	26	12	ICKY THUMP THE WHITE STRIPES	XLCD271 XL/RHYTHM/METHOD
31	17	3	WASTED SLEEPLESS NIGHTS THE ANGELS	LIBUE1232 LIBERATION/UNIVERSAL
32	20	10	TIME ON EARTH CROWDED HOUSE	3960272 PARLOPHONE/EMI
33	34	9	ZEITGEIST SMASHING PUMPKINS	9362499778 WEA/WARNER
34	RE-ENTRY	3	HEADSTRONG ASHLEY TISDALE	9362499955 WEA/WARNER
35	37	4	RUDE MECHANICALS PITCH BLACK	REMOE002 REMOTE/RHYTHM/METHOD
36	36	21	THE BEST DAMN THING AVRIL LAVIGNE	88697094862 SBME
37	RE-ENTRY	2	TI VS TIP TI	7567899821 WEA/WARNER
38	32	19	CALL ME IRRESPONSIBLE MICHAEL BUBLE	9362499987 WEA/WARNER
39	43	20	BECAUSE OF THE TIMES KINGS OF LEON	88697037762 SBME
40	38	13	GOOD MORNING REVIVAL GOOD CHARLOTTE	88697069352 SBME



KEY: ● = GOLD (SINGLES: OVER 7,500 UNITS; ALBUMS: OVER 7,500 UNITS; DVDS: OVER 2,500 UNITS) ● = PLATINUM (SINGLES: OVER 15,000 UNITS; ALBUMS: OVER 15,000 UNITS; DVDS: OVER 5,000 UNITS) ● = NEW ZEALAND MUSIC