



# THE OFFICIAL NEW ZEALAND MUSIC CHART

CHART 1563  
07 May 2007

www.nztop40.com

## TOP 40 SINGLES

| THIS WEEK | LAST WEEK | WEEKS ON CHART | TITLE/ARTIST  | CATALOGUE No. LABEL DISTRIBUTOR |
|-----------|-----------|----------------|---|---------------------------------|
| 1         | 3         | 6              | GIRLFRIEND AVRIL LAVIGNE                                  | 88697073552 SBME                |
| 2         | 2         | 6              | GIVE IT TO ME TIMBALAND FEAT. NELLY AND JUSTIN            | 1732202 UNIVERSAL               |
| 3         | RE-ENTRY  | 2              | DON'T MATTER AKON   | 1733119 UNIVERSAL               |
| 4         | 1         | 10             | CRAWL ATLAS   | 5101196862 ELEMENTS/WARNER      |
| 5         | 4         | 2              | CANDYMAN CHRISTINA AGUILERA                               | 88697083452 SBME                |
| 6         | 5         | 10             | THE SWEET ESCAPE GWEN STEFANI FEAT. AKON                  | 1724449 UNIVERSAL               |
| 7         | 12        | 2              | BECAUSE OF YOU NE-YO                                      | 1732590 UNIVERSAL               |
| 8         | 6         | 3              | BEAUTIFUL LIAR BEYONCE FEAT. SHAKIRA                      | 88697091242 SBME                |
| 9         | 10        | 4              | GLAMOROUS FERGIE FEAT. LUDACRIS                           | 1727218 UNIVERSAL               |
| 10        | 7         | 11             | GRACE KELLY MIKA  | 1724330 UNIVERSAL               |
| 11        | 8         | 11             | WHAT GOES AROUND JUSTIN TIMBERLAKE                        | 88697057992 SBME                |
| 12        | 9         | 7              | CUPID'S CHOKEHOLD / BREAKFAST IN AMERICA GYM CLASS HEROES | 7567899961 WEA/WARNER           |
| 13        | 13        | 9              | MAYBE OPSHOP  | 3939250 SIREN/EMI               |
| 14        | NEW       | 1              | LEAVE ME ALONE (I'M LONELY) PINK                          | 88697093962 SBME                |
| 15        | 16        | 4              | ALL GOOD THINGS (COME TO AN END) NELLY FURTADO            | 1714266 UNIVERSAL               |
| 16        | 14        | 12             | THIS AIN'T A SCENE (IT'S AN ARMS RACE) FALL OUT BOY       | 1718382 UNIVERSAL               |
| 17        | 15        | 30             | LIPS OF AN ANGEL HINDER                                   | 1721335 UNIVERSAL               |
| 18        | 11        | 12             | I WANNA LOVE YOU AKON FEAT. SNOOP DOGG                    | 1718872 UNIVERSAL               |
| 19        | 17        | 9              | STRAIGHT LINES SILVERCHAIR                                | 3902552 ELEVEN/EMI              |
| 20        | 21        | 4              | READ MY MIND THE KILLERS                                  | 1727345 UNIVERSAL               |
| 21        | 19        | 9              | SHADOWFEET BROOKE FRASER                                  | 88697086352 SBME                |
| 22        | NEW       | 1              | BETTER THAN ME HINDER                                     | 1733748 UNIVERSAL               |
| 23        | NEW       | 1              | RUNAWAY LOVE LUDACRIS FEAT. MARY J BLIGE                  | 1731491 UNIVERSAL               |
| 24        | 23        | 7              | ALFIE LILY ALLEN  | 3921710 CAPITOL/EMI             |
| 25        | 18        | 10             | ICE BOX OMARION   | 8869707252 SBME                 |
| 26        | 26        | 16             | DANGEROUS YING YANG TWINS FEAT. WYCLEF JEAN               | METHOD110 METHOD/SHOCK          |
| 27        | 20        | 12             | IT'S NOT OVER DAUGHTRY                                    | 88697075822 SBME                |
| 28        | 22        | 21             | SAY IT RIGHT NELLY FURTADO                                | 1717580 UNIVERSAL               |
| 29        | 38        | 6              | PERFECT DRIVE LUKE THOMPSON                               | PURE007 PURE                    |
| 30        | 24        | 10             | REHAB AMY WINEHOUSE                                       | 1717824 UNIVERSAL               |
| 31        | 27        | 8              | THIS IS WHY I'M HOT MIMS                                  | 3848240 CAPITOL/EMI             |
| 32        | 34        | 3              | YOU LLOYD FEAT. LIL WAYNE                                 | 1732072 UNIVERSAL               |
| 33        | 30        | 5              | RUBY KAISER CHIEFS  | 1724059 UNIVERSAL               |
| 34        | 25        | 16             | SHE MOVES IN HER OWN WAY THE KOOKS                        | 3639882 VIRGIN/EMI              |
| 35        | 28        | 14             | FACE DOWN RED JUMPSUIT APPARATUS                          | 3869252 VIRGIN/EMI              |
| 36        | 31        | 11             | THE PARTY'S JUST BEGUN THE CHEETAH GIRLS                  | 3847432 DISNEY/EMI              |
| 37        | 36        | 22             | WIND IT UP GWEN STEFANI                                   | 1717387 UNIVERSAL               |
| 38        | NEW       | 1              | CHELSEA DAGGER THE FRATELLIS                              | 1705185 UNIVERSAL               |
| 39        | 32        | 22             | HOLD OUT MATT SAUNOA                                      | NZDOL06 RAGE/SHOCK              |
| 40        | 33        | 21             | HOW TO SAVE A LIFE THE FRAY                               | 88697039442 SBME                |

## TOP 10 COMPILATIONS

| THIS WEEK | LAST WEEK | WEEKS ON CHART | TITLE/ARTIST   | CATALOGUE No. LABEL DISTRIBUTOR |
|-----------|-----------|----------------|--|---------------------------------|
| 1         | 1         | 5              | NOW THAT'S WHAT I CALL MUSIC 23 VARIOUS                  | 3937672 EMI                     |
| 2         | 2         | 2              | BROKEN DREAMS III VARIOUS                                | 5144215052 WEA/WARNER           |
| 3         | 3         | 30             | HOUSEWORK SONGS VARIOUS                                  | 3760112 EMI                     |
| 4         | 4         | 14             | CHICK FLICKS VARIOUS                                     | 5101184862 WEA/WARNER           |
| 5         | 5         | 10             | WAITING FOR THE WEEKEND VOL 2 VARIOUS                    | 9847094 UNIVERSAL               |
| 6         | NEW       | 1              | GIRLS ALLOWED II VARIOUS                                 | 9848051 UNIVERSAL               |
| 7         | 6         | 6              | SUPER '70S ONE HIT WONDERS VARIOUS                       | 3752322 EMI                     |
| 8         | RE-ENTRY  | 5              | I LOVE MUM VARIOUS                                       | 3641662 EMI                     |
| 9         | 9         | 15             | THE BEST REGGAE ALBUM IN THE WORLD... EVER VOL 2 VARIOUS | 3881262 EMI                     |
| 10        | 7         | 8              | CRUSTY DEMONS: KIWI CARNAGE TOUR VARIOUS                 | 5144204292 WEA/WARNER           |

## TOP 10 MUSIC DVDS

| THIS WEEK | LAST WEEK | WEEKS ON CHART | TITLE/ARTIST                                     | CATALOGUE No. LABEL DISTRIBUTOR |
|-----------|-----------|----------------|--|---------------------------------|
| 1         | 1         | 14             | NEW YORK MEMORIES: LIVE AT RADIO CITY ANDRE RIEU | 1713579 UNIVERSAL               |
| 2         | NEW       | 1              | A NEW JOURNEY: LIVE AT SLANE CASTLE CELTIC WOMAN | 3832789 MANHATTAN/EMI           |
| 3         | 5         | 20             | LIVE AT THE GREEK THEATRE IL DIVO                | 88697015659 SBME                |
| 4         | 3         | 94             | THE FAREWELL TOUR PART I THE EAGLES              | 2564623072 WEA/WARNER           |
| 5         | 4         | 20             | AT SCHONBRUNN VIENNA ANDRE RIEU                  | 1705763 UNIVERSAL               |
| 6         | 8         | 12             | LIVE AT WEMBLEY WESTLIFE                         | 88697019889 SBME                |
| 7         | RE-ENTRY  | 13             | THE MAGIC OF BONEY M BONEY M                     | 82876893179 SBME                |
| 8         | 2         | 2              | DON'T LOOK BACK: BOX SET BOB DYLAN               | 82876832139 SBME                |
| 9         | 7         | 22             | THE VIDEOS 1989-2004 METALLICA                   | 1714448 UNIVERSAL               |
| 10        | NEW       | 1              | HARAJUKU LOVERS LIVE GWEN STEFANI                | 1714415 UNIVERSAL               |

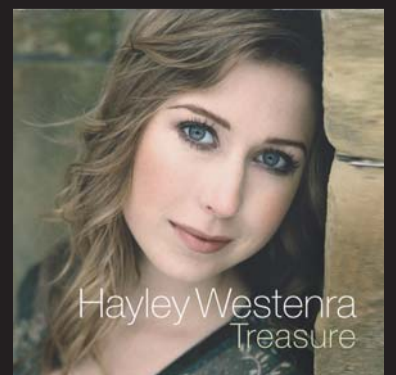
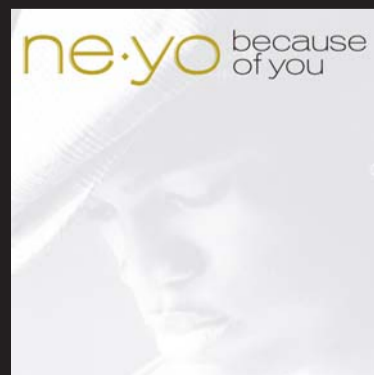
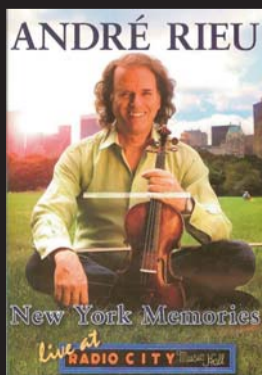
## TOP 10 HEATSEEKERS

| THIS WEEK | LAST WEEK | WEEKS ON CHART | TITLE/ARTIST                                   | CATALOGUE No. LABEL DISTRIBUTOR |
|-----------|-----------|----------------|--|---------------------------------|
| 1         | NEW       | 1              | BECAUSE OF YOU NE-YO                           | 1725648 UNIVERSAL               |
| 2         | NEW       | 1              | AMERICAN DOLL POSSE TORI AMOS                  | 82876861402 SBME                |
| 3         | NEW       | 1              | A NEW JOURNEY CELTIC WOMAN                     | 3751102 MANHATTAN/EMI           |
| 4         | NEW       | 1              | HYMN FOR MY SOUL JOE COCKER                    | 3903732 CAPITOL/EMI             |
| 5         | 7         | 5              | SHANKS' PONY AGE PRYOR                         | AGE01 AGEPRYOR/RHYTHM/METHOD    |
| 6         | NEW       | 1              | BABY 81 BLACK REBEL MOTORCYCLE CLUB            | 88697038022 SBME                |
| 7         | 1         | 6              | LIVE AT MASSEY HALL NEIL YOUNG AND CRAZY HORSE | 936243282 WEA/WARNER            |
| 8         | NEW       | 1              | WE'LL NEVER TURN BACK MAVIS STAPLES            | E888302 ANTI/SHOCK              |
| 9         | 8         | 9              | KAREKARE THE MAMAKU PROJECT                    | MAMAKU1 MAMAKU/RHYTHM/METHOD    |
| 10        | NEW       | 1              | BEYOND DINOSAUR JR                             | PIAS002CD PIAS/UNIVERSAL        |

THE TOP 40 SINGLES CHART IS COMPILED FROM ACROSS-THE-COUNTER RETAIL SALES AND RADIO AIRPLAY.  
THE TOP 40 ALBUMS, TOP 10 COMPILATIONS AND TOP 10 MUSIC DVD CHARTS ARE COMPILED FROM ACROSS-THE-COUNTER RETAIL SALES ONLY.  
HEATSEEKERS ARE THE NEXT 10 ALBUMS OUTSIDE THE TOP 40 TO HAVE NOT YET HIT THE MAIN CHART. COMPILED FROM ACROSS-THE-COUNTER RETAIL SALES.

## TOP 40 ALBUMS

| THIS WEEK | LAST WEEK | WEEKS ON CHART | TITLE/ARTIST                                 | CATALOGUE No. LABEL DISTRIBUTOR |
|-----------|-----------|----------------|--|---------------------------------|
| 1         | 1         | 7              | TREASURE HAYLEY WESTENRA                     | 4758761 UNIVERSAL               |
| 2         | 2         | 24             | KONVICTED AKON                               | 1714473 UNIVERSAL               |
| 3         | 5         | 25             | I'M NOT DEAD: TOUR EDITION PINK              | 88697095062 SBME                |
| 4         | NEW       | 1              | REACH OUT: THE MOTOWN RECORD HUMAN NATURE    | 82876828942 SBME                |
| 5         | 8         | 35             | THE SOUND OF BREAD BREAD                     | 8122747562 WEA/WARNER           |
| 6         | 9         | 3              | SECOND HAND PLANET OPSHOP                    | 3919192 SIREN/EMI               |
| 7         | 3         | 3              | THE BEST DAMN THING AVRIL LAVIGNE            | 88697094862 SBME                |
| 8         | 6         | 5              | BECAUSE OF THE TIMES KINGS OF LEON           | 88697037762 SBME                |
| 9         | 22        | 2              | PORTRAIT OF A LEGEND: 1951-1964 SAM COOKE    | 9872418 UNIVERSAL               |
| 10        | 10        | 34             | FUTURESEX / LOVESOUNDS JUSTIN TIMBERLAKE     | 82876880622 SBME                |
| 11        | 14        | 22             | ALBERTINE BROOKE FRASER                      | 88697025162 SBME                |
| 12        | 12        | 36             | LOOSE NELLY FURTADO                          | 9853917 UNIVERSAL               |
| 13        | 7         | 13             | INFINITY ON HIGH FALL OUT BOY                | 1720575 UNIVERSAL               |
| 14        | 4         | 2              | FAVOURITE WORST NIGHTMARE ARCTIC MONKEYS     | 3939242 DOMINO/EMI              |
| 15        | 11        | 3              | BEGIN TO HOPE REGINA SPEKTOR                 | 9362441122 WEA/WARNER           |
| 16        | 13        | 6              | ROCKET MAN: THE DEFINITIVE HITS ELTON JOHN   | 1726052 UNIVERSAL               |
| 17        | 15        | 5              | SHOCK VALUE TIMBALAND                        | 1726005 UNIVERSAL               |
| 18        | 17        | 16             | B'DAY: DELUXE EDITION BEYONCE                | 88697083922 SBME                |
| 19        | NEW       | 1              | CALL ME IRRESPONSIBLE MICHAEL BUBLE          | 9362499987 WEA/WARNER           |
| 20        | 16        | 51             | STADIUM ARCADIAM RED HOT CHILI PEPPERS       | 936249962 WEA/WARNER            |
| 21        | 19        | 10             | LIFE IN CARTOON MOTION MIKA                  | 1723781 UNIVERSAL               |
| 22        | 18        | 3              | GRAND NATIONAL JOHN BUTLER TRIO              | JBT011 JARRAH/EMI               |
| 23        | 24        | 15             | BACK TO BLACK AMY WINEHOUSE                  | 1714211 UNIVERSAL               |
| 24        | 20        | 2              | YEAR ZERO NINE INCH NAILS                    | 1732423 UNIVERSAL               |
| 25        | 21        | 7              | GOOD MORNING REVIVAL GOOD CHARLOTTE          | 88697065142 SBME                |
| 26        | 27        | 40             | REAL LIFE EVERMORE                           | 5101142122 WEA/WARNER           |
| 27        | RE-ENTRY  | 11             | BACK TO BASICS CHRISTINA AGUILERA            | 82876896342 SBME                |
| 28        | 30        | 6              | A BEAUTIFUL LIE 30 SECONDS TO MARS           | 5909922 VIRGIN/EMI              |
| 29        | 25        | 43             | EYES OPEN SNOW PATROL                        | 9853178 UNIVERSAL               |
| 30        | 32        | 22             | THE SWEET ESCAPE GWEN STEFANI                | 1717390 UNIVERSAL               |
| 31        | 28        | 14             | NOT TOO LATE NORAH JONES                     | 3821822 BLUENOTE/EMI            |
| 32        | 23        | 5              | THE VERY BEST OF: 40TH ANNIVERSARY THE DOORS | 8122799958 RHINO/WARNER         |
| 33        | RE-ENTRY  | 24             | UNDISCOVERED JAMES MORRISON                  | 9878240 UNIVERSAL               |
| 34        | 34        | 4              | THE EVOLUTION CIARA                          | 88697081102 SBME                |
| 35        | 26        | 5              | YOUNG MODERN SILVERCHAIR                     | 3907852 ELEVEN/EMI              |
| 36        | 33        | 31             | SAM'S TOWN THE KILLERS                       | 1706722 UNIVERSAL               |
| 37        | NEW       | 1              | OUR PLACE ADI DICK                           | LP042 LOOP/BORDER               |
| 38        | 39        | 24             | 18 SINGLES U2                                | 1713549 UNIVERSAL               |
| 39        | NEW       | 1              | STREETLIGHTS AND SHADOWS 48MAY               | 5101170332 MUSHROOM/WARNER      |
| 40        | 29        | 23             | EXTREME BEHAVIOUR HINDER                     | 9884987 UNIVERSAL               |



KEY: ● = GOLD (SINGLES: OVER 5,000 UNITS; ALBUMS: OVER 7,500 UNITS; DVDS: OVER 2,500 UNITS) ● = PLATINUM (SINGLES: OVER 10,000 UNITS; ALBUMS: OVER 15,000 UNITS; DVDS: OVER 5,000 UNITS) ● = NEW ZEALAND MUSIC